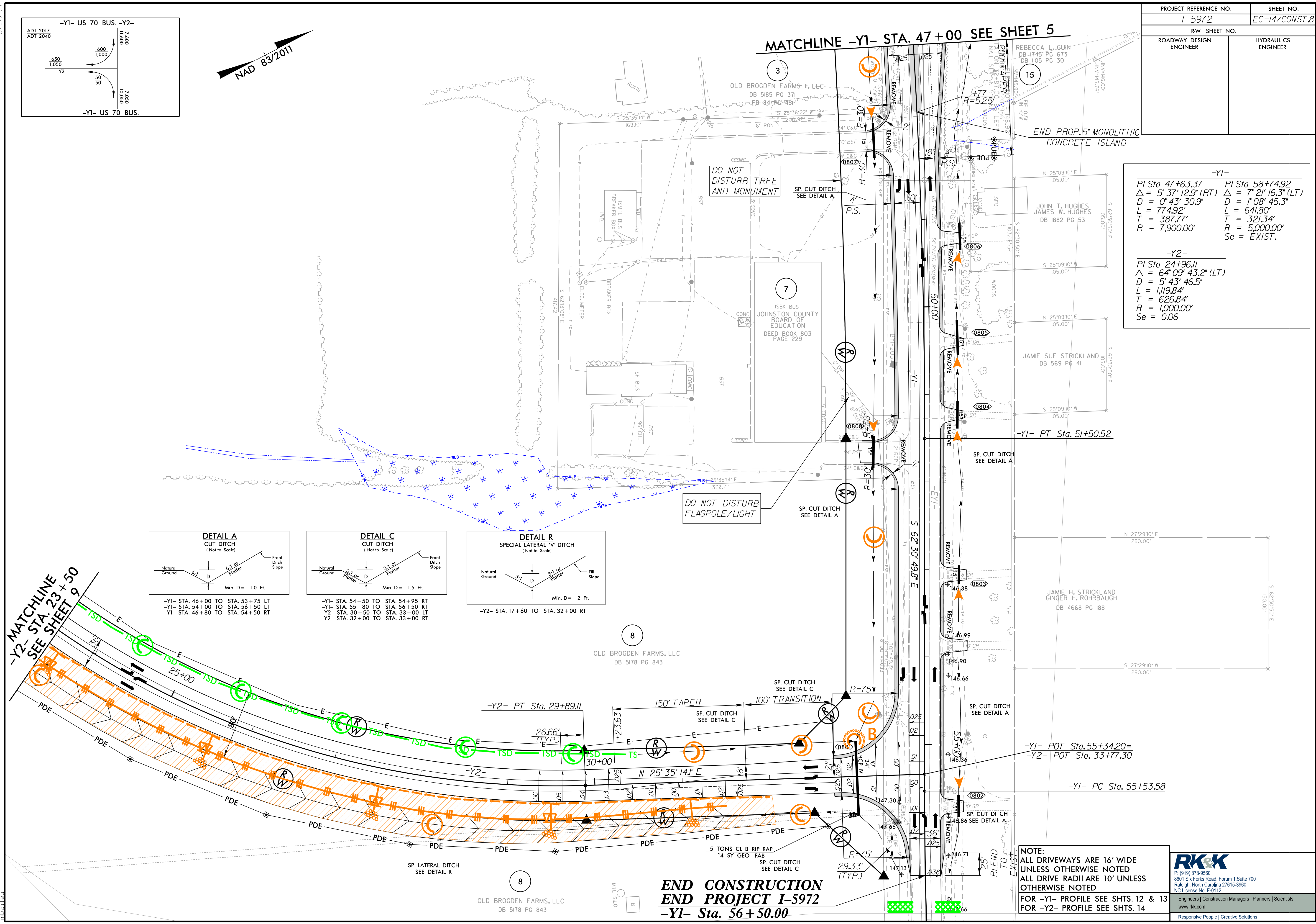


PROJECT REFERENCE NO.		SHEET NO.
1-5972		EC-14/CONST.8
RW SHEET NO.		
ROADWAY DESIGN ENGINEER	HYDRAULICS ENGINEER	

MATCHLINE -Y1- STA. 47+00 SEE SHEET 5



-Y1-	
PI Sta 47+63.37	PI Sta 58+74.92
$\Delta = 5' 37' 12.9''$ (RT)	$\Delta = 7' 21' 16.3''$ (LT)
$D = 0' 43' 30.9''$	$D = 1' 08' 45.3''$
$L = 774.92'$	$L = 641.80'$
$T = 387.77'$	$T = 321.34'$
$R = 7,900.00'$	$R = 5,000.00'$
	$Se = EXIST.$

-Y2-	
PI Sta 24+96.11	
$\Delta = 64' 09' 43.2''$ (LT)	
$D = 5' 43' 46.5''$	
$L = 1,119.84'$	
$T = 626.84'$	
$R = 1,000.00'$	
$Se = 0.06$	

DETAIL A CUT DITCH (Not to Scale)	DETAIL C CUT DITCH (Not to Scale)	DETAIL R SPECIAL LATERAL 'V' DITCH (Not to Scale)
<p>-Y1- STA. 46+00 TO STA. 53+75 LT</p> <p>-Y1- STA. 54+00 TO STA. 56+50 LT</p> <p>-Y1- STA. 46+80 TO STA. 54+50 RT</p>	<p>-Y1- STA. 54+50 TO STA. 54+95 RT</p> <p>-Y1- STA. 55+80 TO STA. 56+50 RT</p> <p>-Y2- STA. 30+50 TO STA. 33+00 LT</p> <p>-Y2- STA. 32+00 TO STA. 33+00 RT</p>	<p>-Y2- STA. 17+60 TO STA. 32+00 RT</p>

MATCHLINE  
-Y2- STA. 23+50  
SEE SHEET 9

**END CONSTRUCTION  
END PROJECT I-5972  
-Y1- Sta. 56+50.00**

**NOTE:**  
ALL DRIVEWAYS ARE 16' WIDE  
UNLESS OTHERWISE NOTED  
ALL DRIVE RADII ARE 10' UNLESS  
OTHERWISE NOTED  
FOR -Y1- PROFILE SEE SHTS. 12 & 13  
FOR -Y2- PROFILE SEE SHTS. 14

RKK  
P: (919) 878-9560  
8601 Six Forks Road, Forum 1, Suite 700  
Raleigh, North Carolina 27615-3960  
NC License No. F-0112  
[www.rkk.com](http://www.rkk.com)  
Engineers | Construction Managers | Planners | Scientists  
Responsive People | Creative Solutions

7/7/2023 R:\Highways\CAAD\PSH\Erosion\_Control\15972\_EC\_psh14.dgn