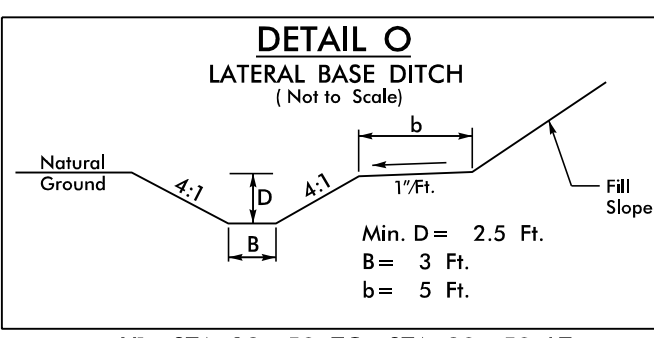
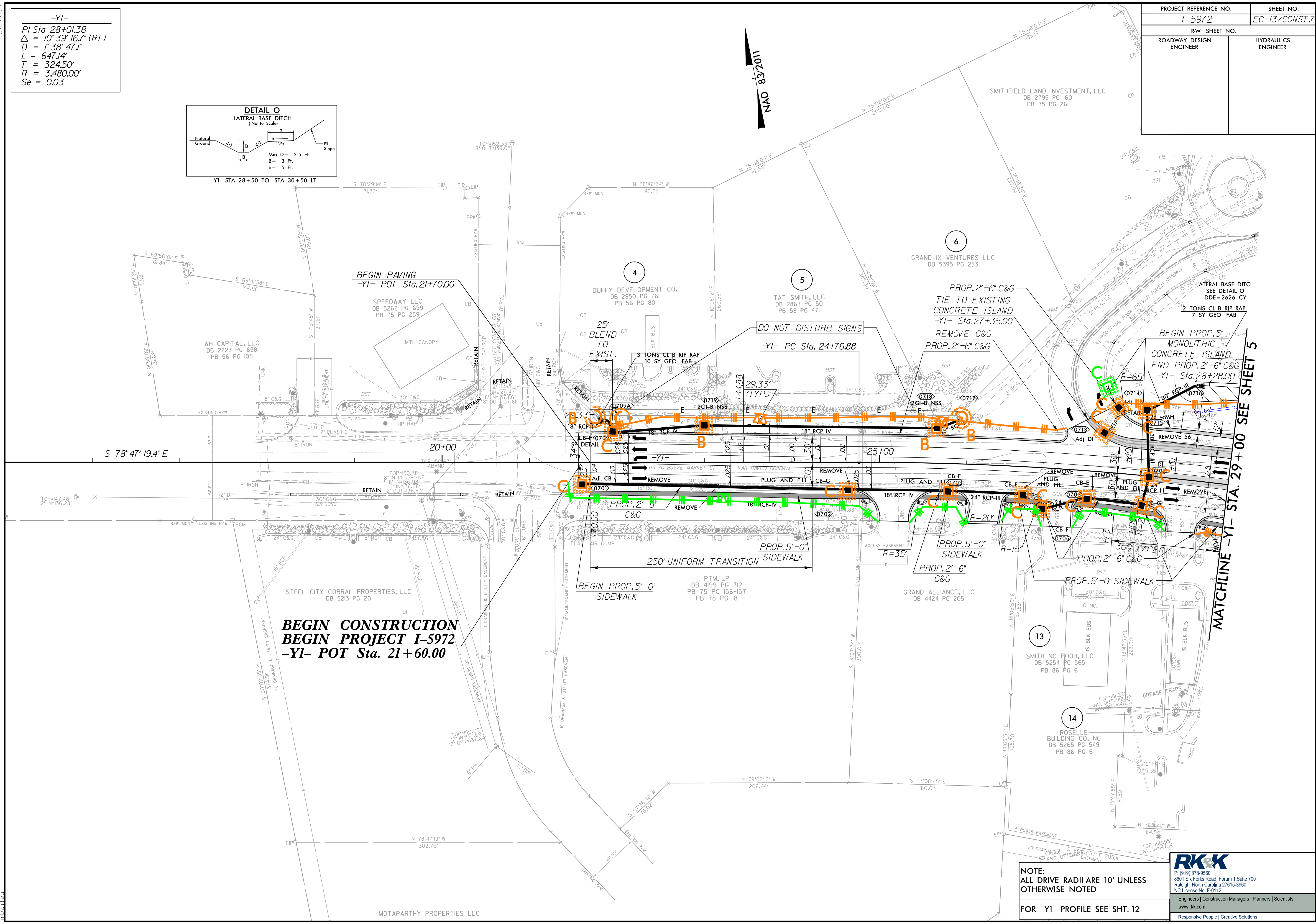


PROJECT REFERENCE NO.		SHEET NO.	
I-5972		EC-13/CONST.7	
RW SHEET NO.		HYDRAULICS ENGINEER	
ROADWAY DESIGN ENGINEER			

-Y1-
 $PI\ Sta\ 28+01.38$
 $\Delta = 10^{\circ} 39' 16.7'' (RT)$
 $D = 1^{\circ} 38' 47.1''$
 $L = 647.14'$
 $T = 324.50'$
 $R = 3,480.00'$
 $Se = 0.03$



8/17/99
 7/7/2023
 R:\H\c\c\c\c\c\CADD\PSH\Erosion_Control\I5972_EC_psh13.dgn



NOTE:
 ALL DRIVE RADII ARE 10' UNLESS OTHERWISE NOTED
 FOR -Y1- PROFILE SEE SHT. 12

RKK
 P: (919) 878-9560
 8601 Six Forks Road, Forum 1, Suite 700
 Raleigh, North Carolina 27615-3960
 NC License No. F-0112
 Engineers | Construction Managers | Planners | Scientists
 www.rkk.com
 Responsive People | Creative Solutions