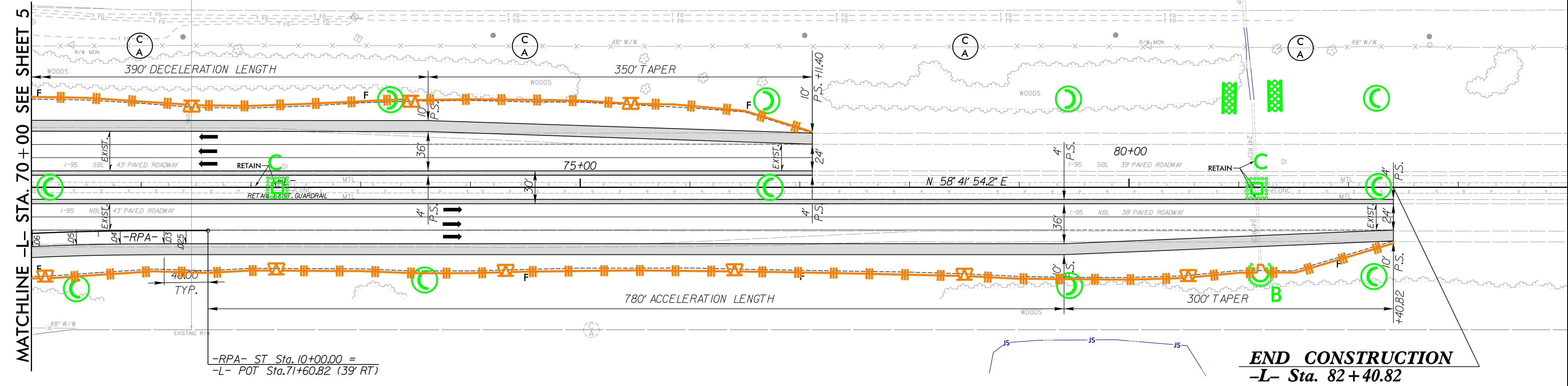
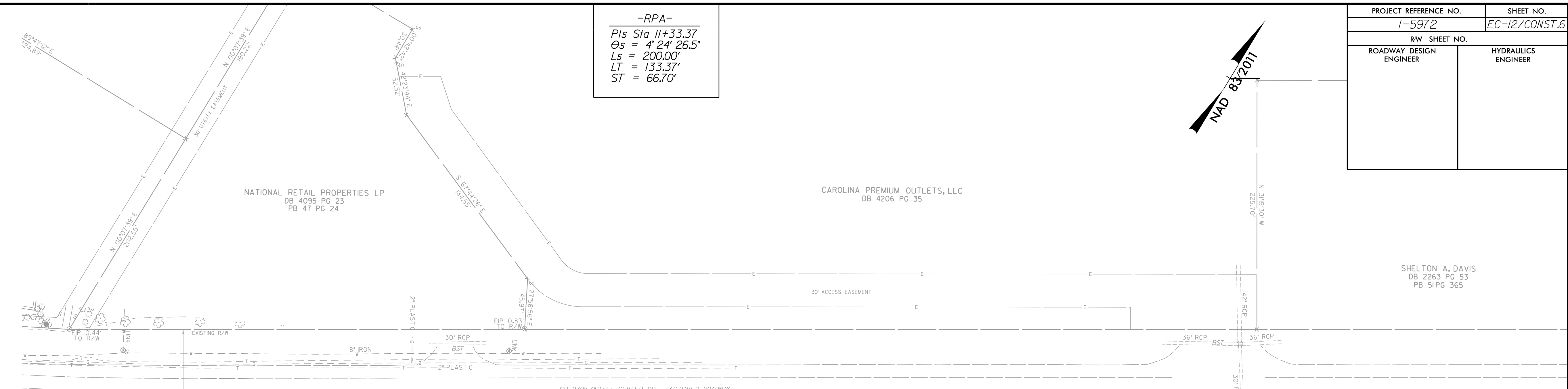
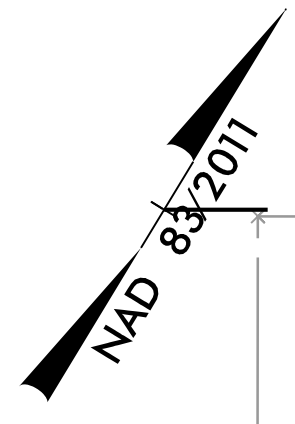


8/17/99

PROJECT REFERENCE NO.	SHEET NO.
1-5972	EC-12/CONST.6
RW SHEET NO.	
ROADWAY DESIGN ENGINEER	HYDRAULICS ENGINEER

-RPA-
 Pls Sta 11+33.37
 $\theta_s = 4^{\circ} 24' 26.5''$
 $L_s = 200.00'$
 $LT = 133.37'$
 $ST = 66.70'$



JOHN TIMOTHY HUGHES
 JAMES WILLIAM HUGHES
 DB 1293 PG 564

RK&K
 P: (919) 878-9560
 8601 Six Forks Road, Forum 1, Suite 700
 Raleigh, North Carolina 27615-3960
 NC License No. F-0112
 Engineers | Construction Managers | Planners | Scientists
 www.rkk.com
 Responsive People | Creative Solutions

FOR -L- PROFILE SEE SHT. 11
 FOR -RPA- PROFILE SEE SHT. 14

7/7/2023
 R:\H\c\ou\l\res\CADD\PSH\Erosion_Control\15972_EC_psh12.dgn