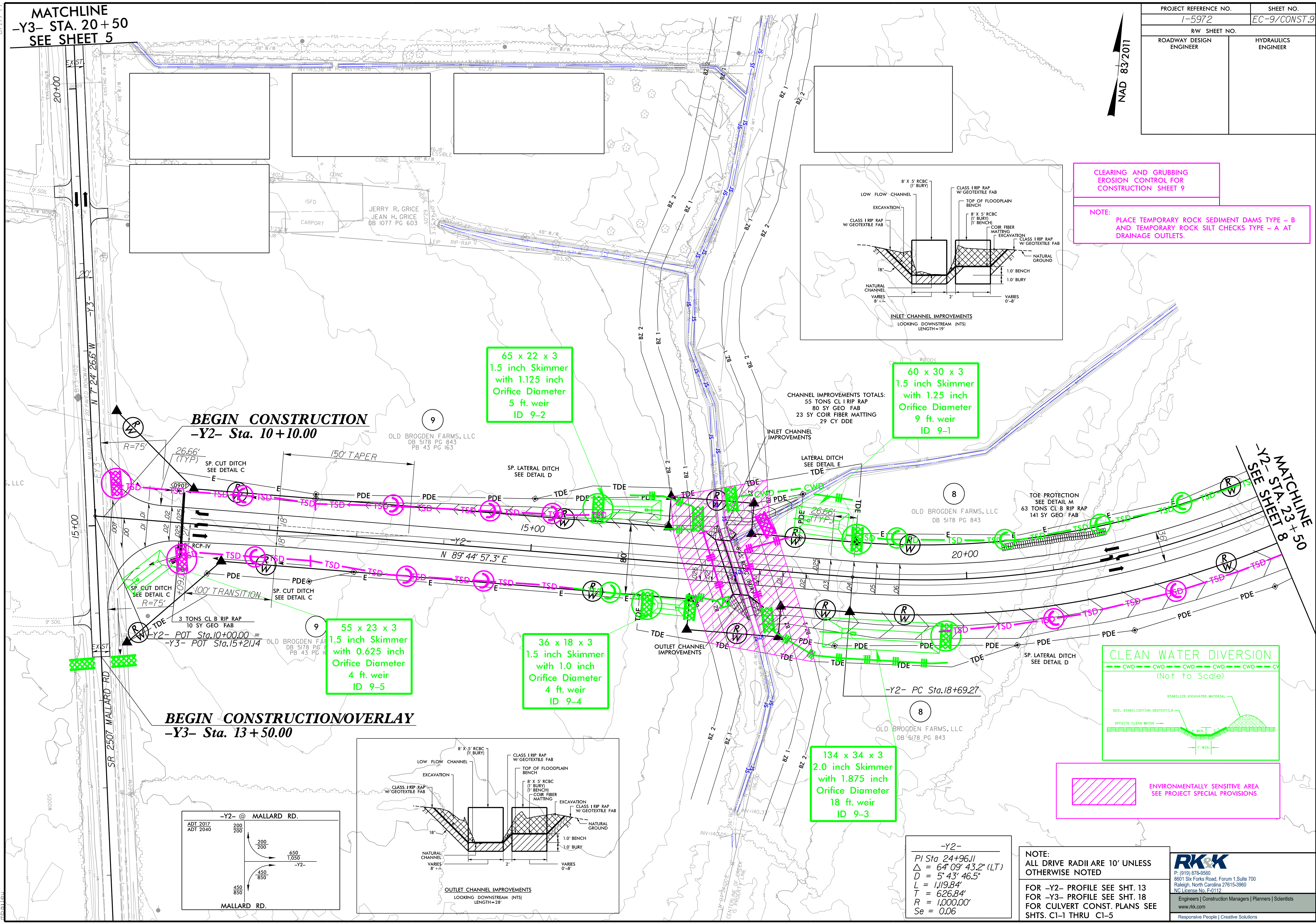


MATCHLINE
-Y3- STA. 20+50
SEE SHEET 5

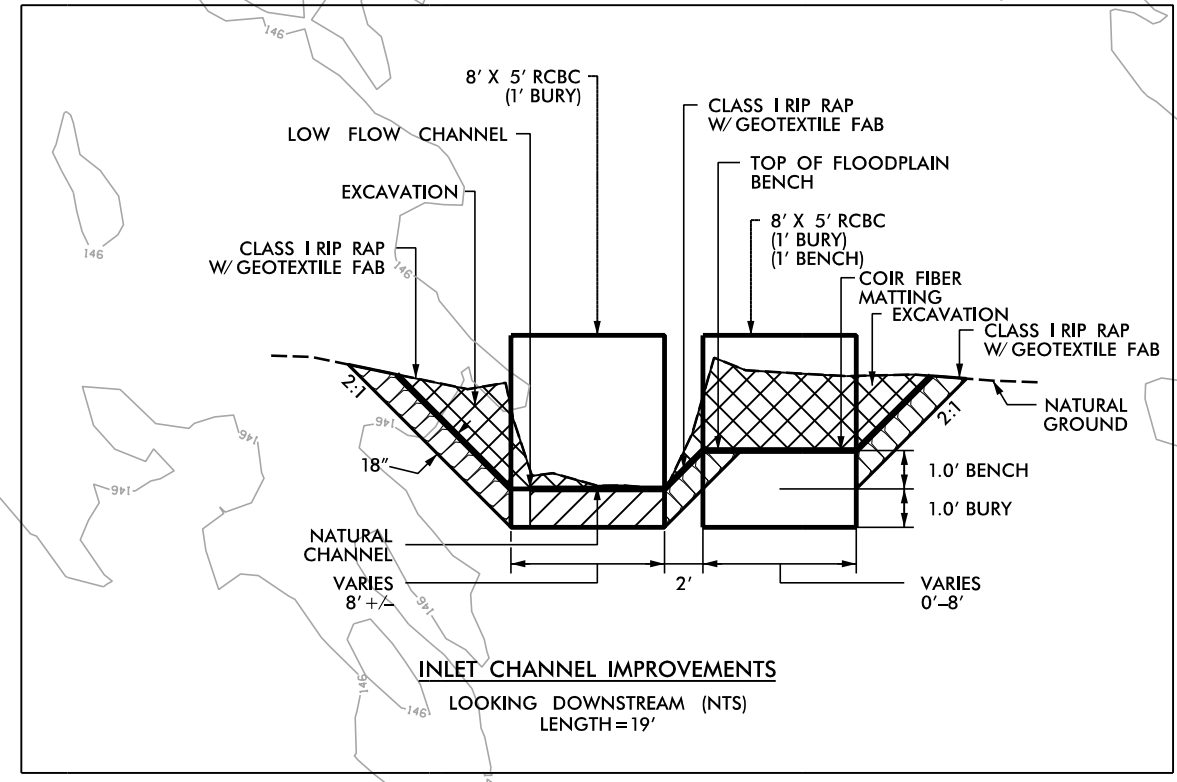
PROJECT REFERENCE NO. 1-5972	SHEET NO. EC-9/CONST.9
RW SHEET NO.	
ROADWAY DESIGN ENGINEER	HYDRAULICS ENGINEER

NAD 83/2011



CLEARING AND GRUBBING
EROSION CONTROL FOR
CONSTRUCTION SHEET 9

NOTE:
PLACE TEMPORARY ROCK SEDIMENT DAMS TYPE - B
AND TEMPORARY ROCK SILT CHECKS TYPE - A AT
DRAINAGE OUTLETS.



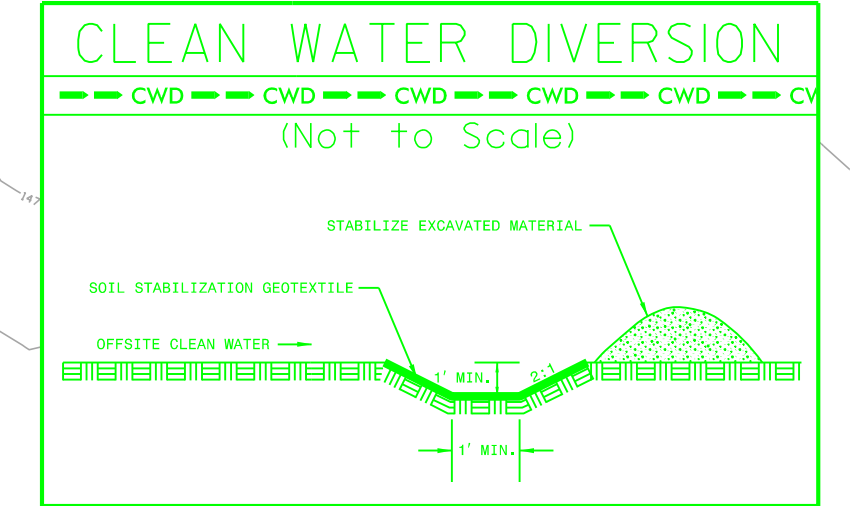
65 x 22 x 3
1.5 inch Skimmer
with 1.125 inch
Orifice Diameter
5 ft. weir
ID 9-2

60 x 30 x 3
1.5 inch Skimmer
with 1.25 inch
Orifice Diameter
9 ft. weir
ID 9-1

55 x 23 x 3
1.5 inch Skimmer
with 0.625 inch
Orifice Diameter
4 ft. weir
ID 9-5

36 x 18 x 3
1.5 inch Skimmer
with 1.0 inch
Orifice Diameter
4 ft. weir
ID 9-4

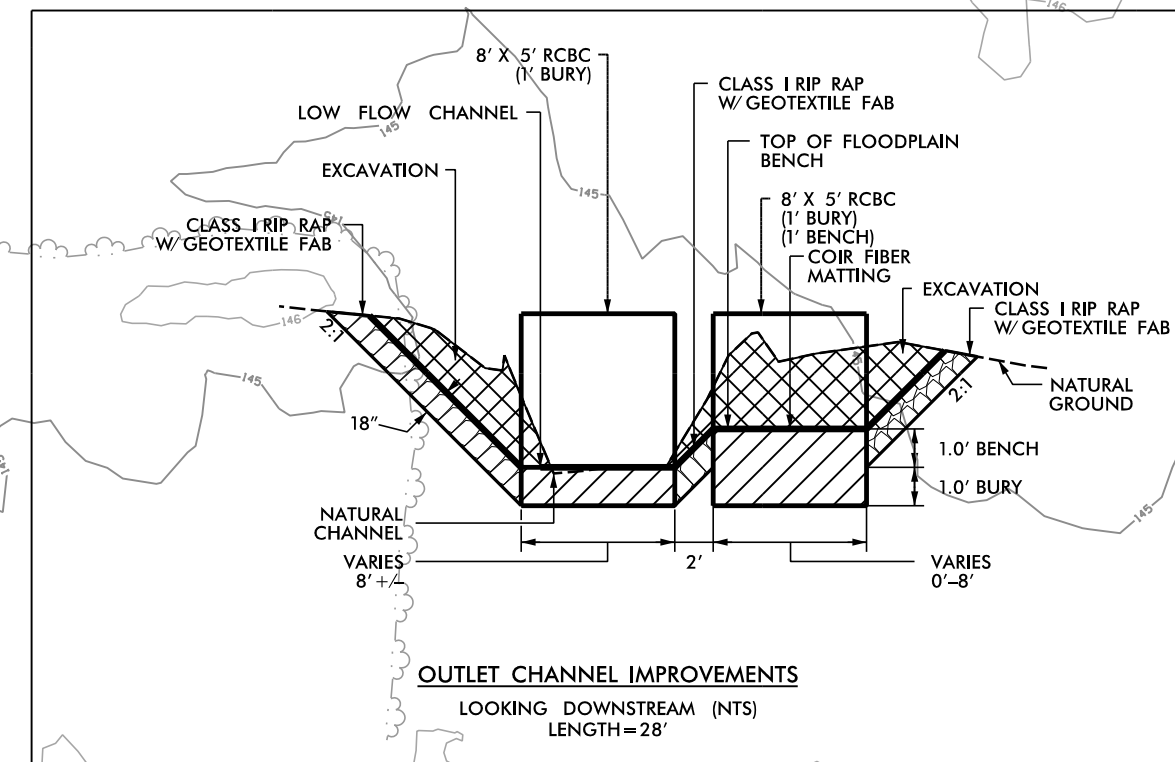
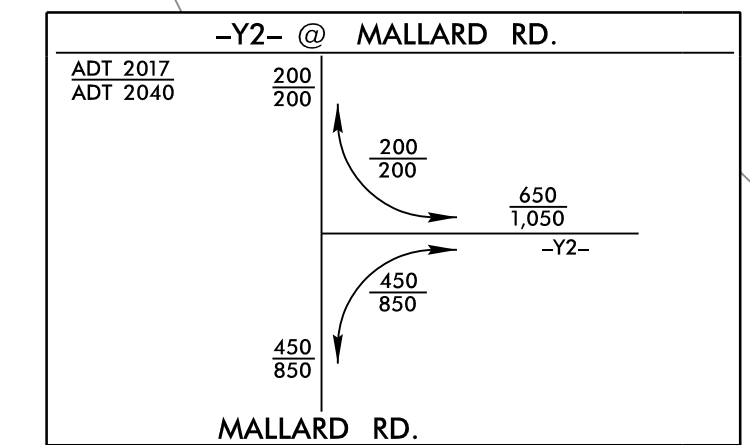
134 x 34 x 3
2.0 inch Skimmer
with 1.875 inch
Orifice Diameter
18 ft. weir
ID 9-3



ENVIRONMENTALLY SENSITIVE AREA
SEE PROJECT SPECIAL PROVISIONS

BEGIN CONSTRUCTION
-Y2- Sta. 10+10.00

BEGIN CONSTRUCTION OVERLAY
-Y3- Sta. 13+50.00



-Y2-
PI Sta. 24+96.11
Δ = 64'09" 43.2" (LT)
D = 5' 43" 46.5"
L = 1,119.84'
T = 626.84'
R = 1,000.00'
Se = 0.06

NOTE:
ALL DRIVE RADII ARE 10' UNLESS
OTHERWISE NOTED

FOR -Y2- PROFILE SEE SHT. 13
FOR -Y3- PROFILE SEE SHT. 18
FOR CULVERT CONST. PLANS SEE
SHTS. C1-1 THRU C1-5

RKK
P: (919) 878-9560
8601 Six Forks Road, Forum 1, Suite 700
Raleigh, North Carolina 27615-3960
NC License No. F-0112
Engineers | Construction Managers | Planners | Scientists
www.rkk.com
Responsive People | Creative Solutions

7/7/2023 R:\Highways\CAAD\PSH\Erosion_Control\15972_EC_psh09.dgn