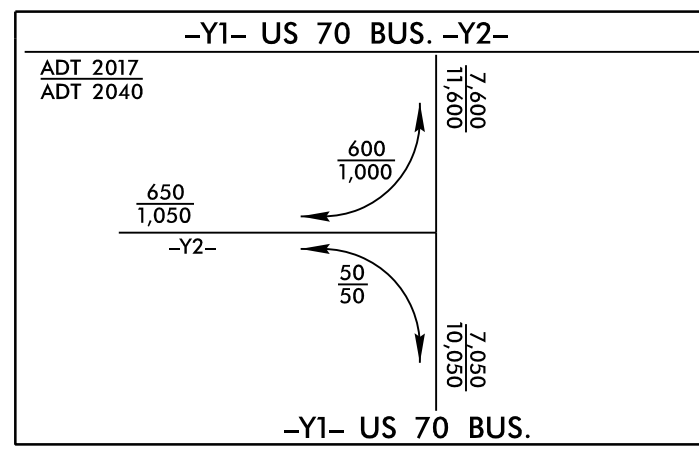


PROJECT REFERENCE NO.	SHEET NO.
1-5972	EC-8/CONST.8
RW SHEET NO.	
ROADWAY DESIGN ENGINEER	HYDRAULICS ENGINEER

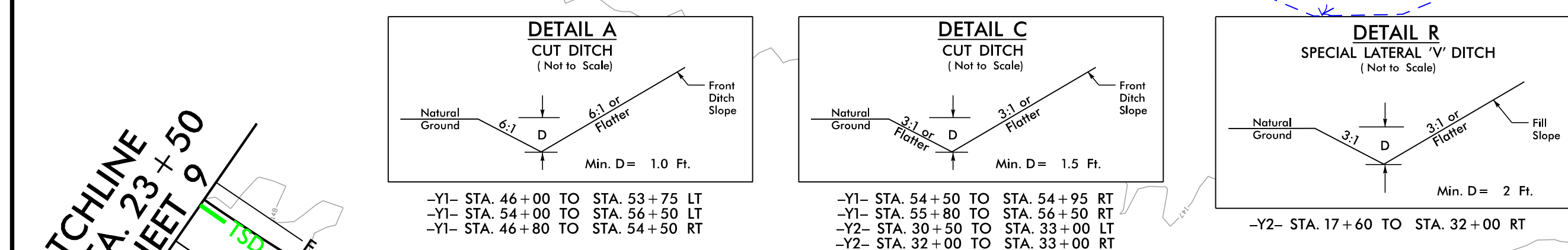


CLEARING AND GRUBBING
EROSION CONTROL FOR
CONSTRUCTION SHEET 8

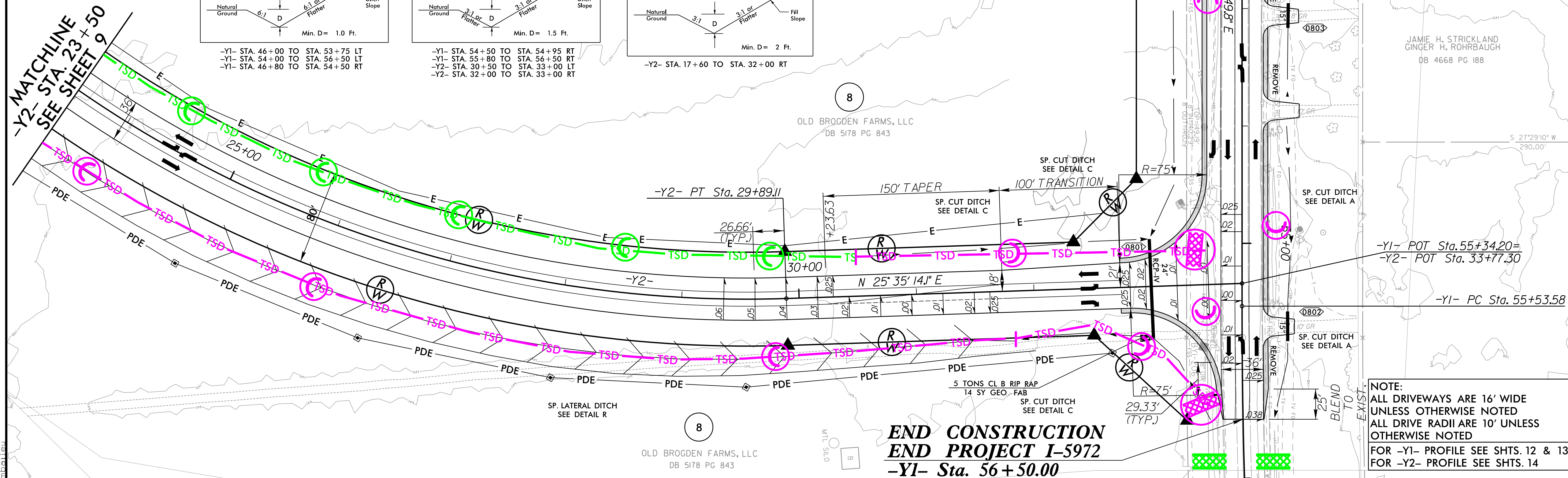
NOTE:
PLACE TEMPORARY ROCK SEDIMENT DAMS TYPE - B
AND TEMPORARY ROCK SILT CHECKS TYPE - A AT
DRAINAGE OUTLETS.

MATCHLINE -Y1- STA. 47+00 SEE SHEET 5

-Y1-	
PI Sta 47+63.37	PI Sta 58+74.92
$\Delta = 5' 37' 12.9''$ (RT)	$\Delta = 7' 21' 16.3''$ (LT)
$D = 0' 43' 30.9''$	$D = 1' 08' 45.3''$
$L = 774.92'$	$L = 641.80'$
$T = 387.77'$	$T = 321.34'$
$R = 7,900.00'$	$R = 5,000.00'$
	Se = EXIST.
-Y2-	
PI Sta 24+96.11	
$\Delta = 64' 09' 43.2''$ (LT)	
$D = 5' 43' 46.5''$	
$L = 1,119.84'$	
$T = 626.84'$	
$R = 1,000.00'$	
$Se = 0.06$	



MATCHLINE
-Y2- STA. 23+50
SEE SHEET 9



END CONSTRUCTION
END PROJECT 1-5972
-Y1- Sta. 56+50.00

NOTE:
ALL DRIVEWAYS ARE 16' WIDE
UNLESS OTHERWISE NOTED
ALL DRIVE RADII ARE 10' UNLESS
OTHERWISE NOTED
FOR -Y1- PROFILE SEE SHTS. 12 & 13
FOR -Y2- PROFILE SEE SHTS. 14

RKK
P: (919) 878-9560
8601 Six Forks Road, Forum 1, Suite 700
Raleigh, North Carolina 27615-3960
NC License No. F-0112
www.rkk.com
Responsive People | Creative Solutions

7/7/2023 R:\Highways\CAADD\PSH\Erosion_Control\15972_EC_psh08.dgn