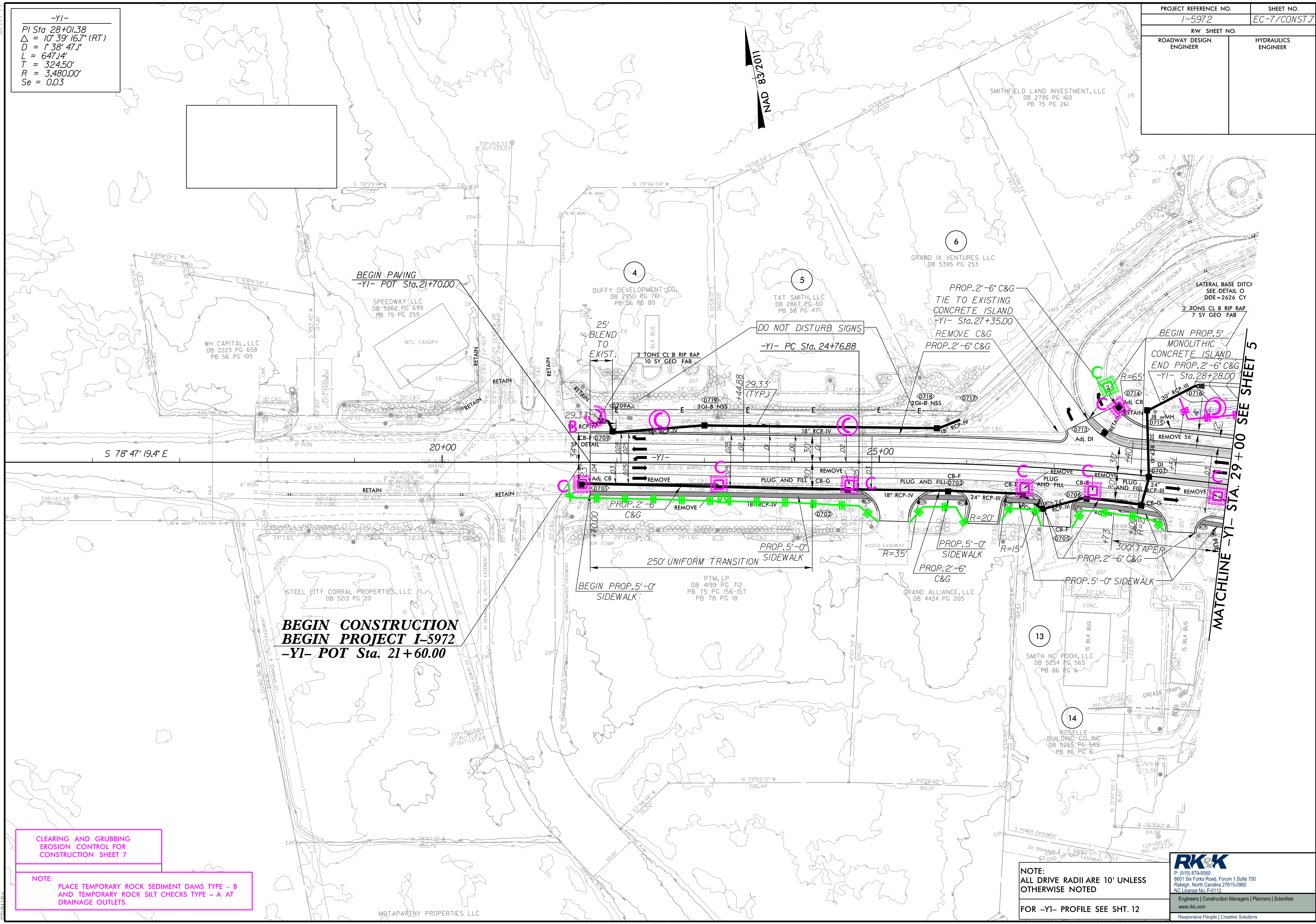


PROJECT REFERENCE NO.		SHEET NO.	
I-5972		EC-7/CONST.7	
RW SHEET NO.			
ROADWAY DESIGN ENGINEER		HYDRAULICS ENGINEER	

-YI-
 PI Sta 28+01.38
 $\Delta = 10' 39' 16.7''$ (RT)
 $D = 1' 38' 47.1''$
 $L = 647.14'$
 $T = 324.50'$
 $R = 3,480.00'$
 $Se = 0.03$



CLEARING AND GRUBBING
 EROSION CONTROL FOR
 CONSTRUCTION SHEET 7

NOTE:
 PLACE TEMPORARY ROCK SEDIMENT DAMS TYPE - B
 AND TEMPORARY ROCK SILT CHECKS TYPE - A AT
 DRAINAGE OUTLETS.

NOTE:
 ALL DRIVE RADII ARE 10' UNLESS
 OTHERWISE NOTED

FOR -YI- PROFILE SEE SHT. 12

RKK
 P: (919) 878-9560
 8601 Six Forks Road, Forum 1, Suite 700
 Raleigh, North Carolina 27615-3960
 NC License No. F-0112
 Engineers | Construction Managers | Planners | Scientists
 www.rkk.com
 Responsive People | Creative Solutions

MATCHLINE -YI- STA. 29+00 SEE SHEET 5

7/7/2023 R:\Highways\I-5972\EC-7\Const\I-5972_EC_psh07.dgn