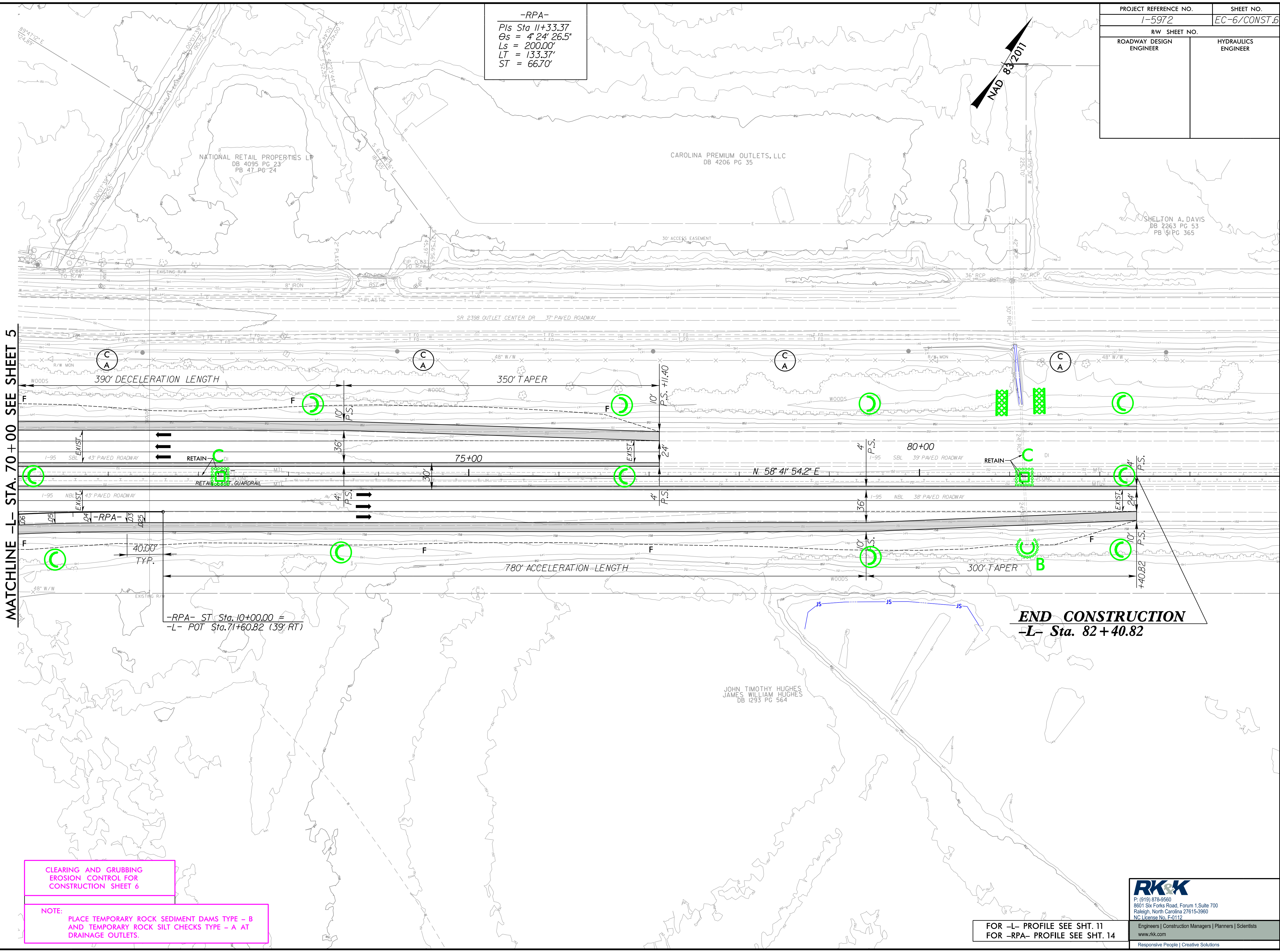
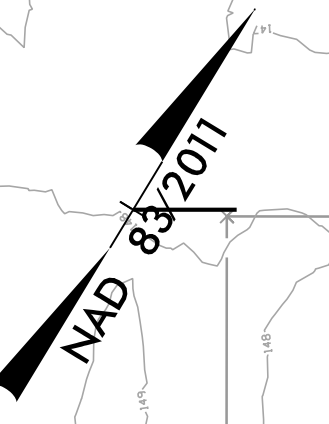


PROJECT REFERENCE NO.	SHEET NO.
1-5972	EC-6/CONST.6
RW SHEET NO.	
ROADWAY DESIGN ENGINEER	HYDRAULICS ENGINEER

-RPA-
 Pts Sta 11+33.37
 $\theta_s = 4^\circ 24' 26.5''$
 $L_s = 200.00'$
 $LT = 133.37'$
 $ST = 66.70'$



MATCHLINE -L- STA. 70+00 SEE SHEET 5

END CONSTRUCTION
 -L- Sta. 82+40.82

-RPA- ST Sta. 10+00.00 =
 -L- POT Sta. 71+60.82 (39' RT)

CLEARING AND GRUBBING
 EROSION CONTROL FOR
 CONSTRUCTION SHEET 6

NOTE:
 PLACE TEMPORARY ROCK SEDIMENT DAMS TYPE - B
 AND TEMPORARY ROCK SILT CHECKS TYPE - A AT
 DRAINAGE OUTLETS.

RKK
 P: (919) 878-9560
 8601 Six Forks Road, Forum 1, Suite 700
 Raleigh, North Carolina 27615-3960
 NC License No. F-0112

Engineers | Construction Managers | Planners | Scientists
 www.rkk.com
 Responsive People | Creative Solutions

FOR -L- PROFILE SEE SHT. 11
 FOR -RPA- PROFILE SEE SHT. 14

7/7/2023 R:\H\cal\lincs\CADD\PSH\Erosion_Control\15972_EC_psh06.dgn