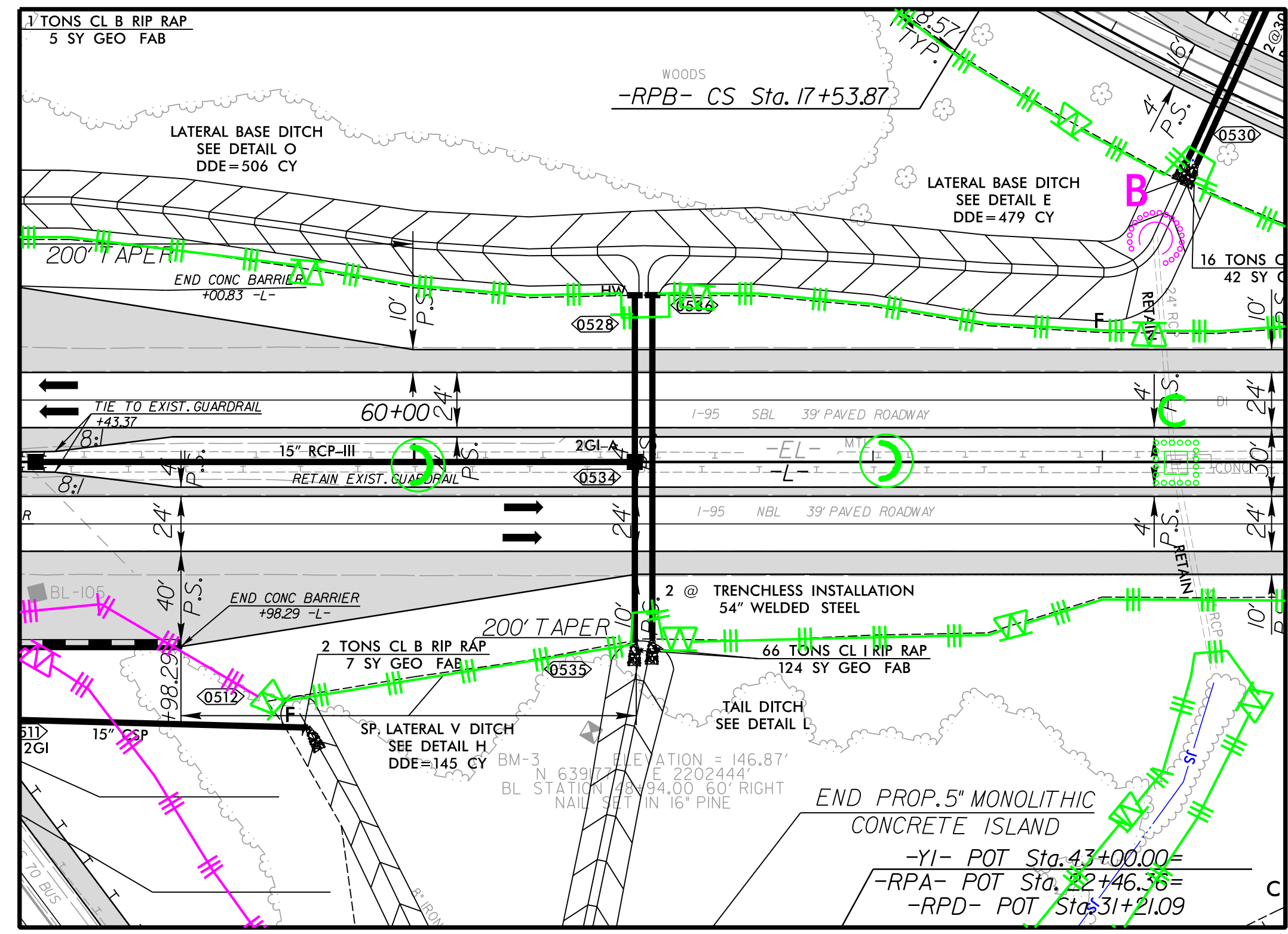
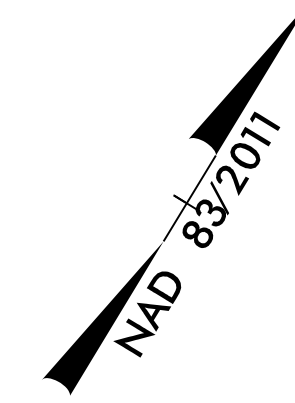


PROJECT REFERENCE NO. 1-5972	SHEET NO. EC-5B
RW SHEET NO.	
ROADWAY DESIGN ENGINEER	HYDRAULICS ENGINEER



PIPE INSTALLATION SEQUENCE STA. 61+00 -L-

1. INSTALL ALL BOTH AND CLEARING AND GRUBBING DEVICES.
2. INSTALL DUAL 54" PIPES WHILE MAINTAINING FLOW THROUGH EXSITING 24" PIPE. STRUCTURES DOWNSTREAM SHOULD BE COMPLETED BEFORE CONSTRUCTION ON THESE PIPES BEGIN.
3. INSTALL SYSTEM CONNECTED TO 54" PIPES.
4. INSTALL DITCHES AT INLET OF PIPE TO ALLOW FLOW THROUGH PIPES.
5. BUILD ROADWAY FILL.
6. INSTALL ALL FINAL PHASE DEVICES.