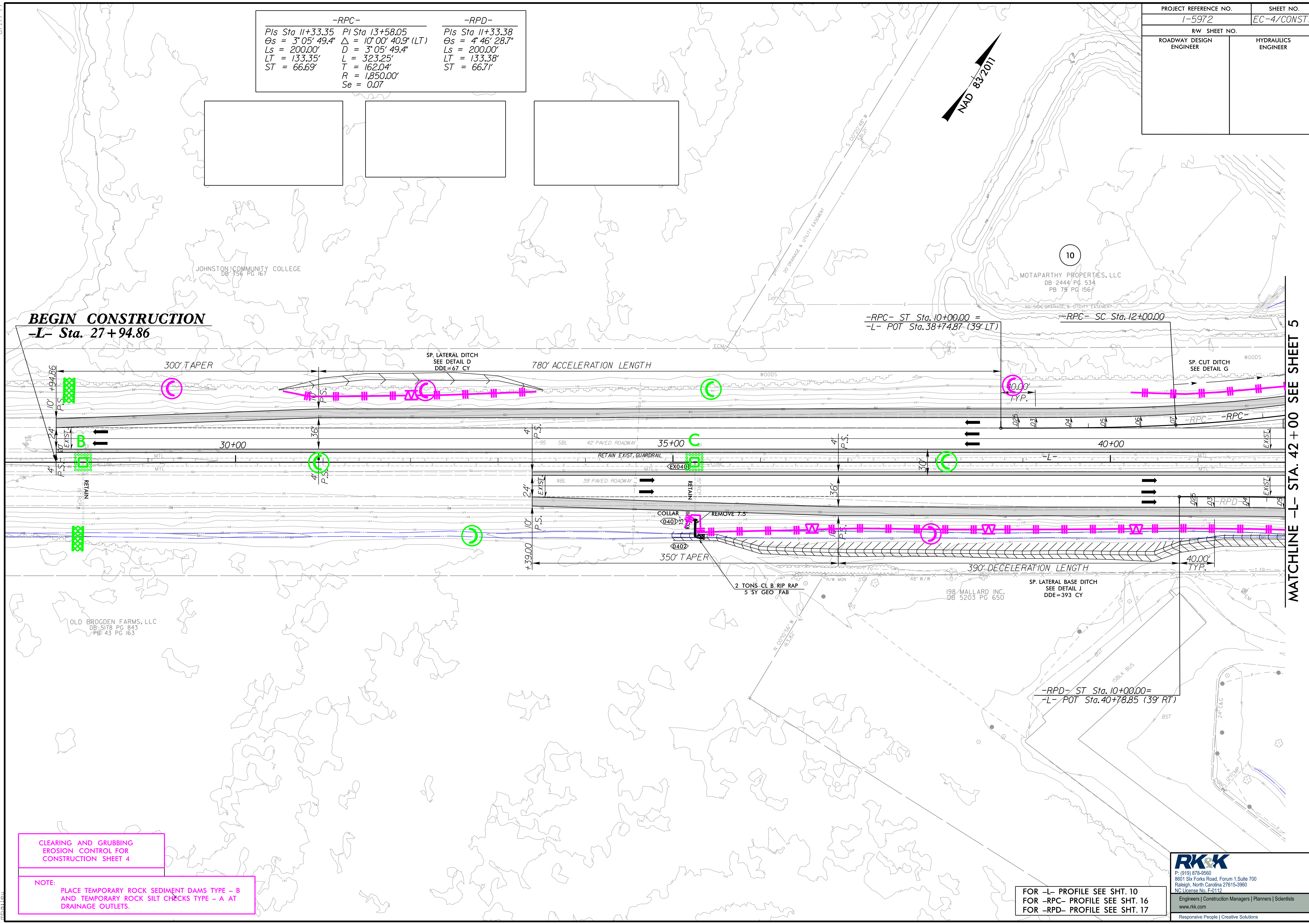
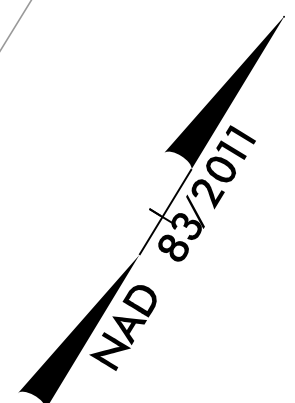


PROJECT REFERENCE NO.	SHEET NO.
I-5972	EC-4/CONST.4
RW SHEET NO.	
ROADWAY DESIGN ENGINEER	HYDRAULICS ENGINEER

-RPC-		-RPD-	
Pls Sta 11+33.35	PI Sta 13+58.05	Pls Sta 11+33.38	
$\Theta_s = 3^{\circ}05'49.4"$	$\Delta = 10^{\circ}00'40.9"$ (LT)	$\Theta_s = 4^{\circ}46'28.7"$	
$L_s = 200.00'$	$D = 3^{\circ}05'49.4"$	$L_s = 200.00'$	
$LT = 133.35'$	$L = 323.25'$	$LT = 133.38'$	
$ST = 66.69'$	$T = 162.04'$	$ST = 66.71'$	
	$R = 1,850.00'$		
	$Se = 0.07$		



BEGIN CONSTRUCTION
-L- Sta. 27+94.86

-RPC- ST Sta. 10+00.00 =
-L- POT Sta. 38+74.87 (39' LT)

-RPD- ST Sta. 10+00.00 =
-L- POT Sta. 40+78.85 (39' RT)

MATCHLINE -L- STA. 42 + 00 SEE SHEET 5

CLEARING AND GRUBBING
EROSION CONTROL FOR
CONSTRUCTION SHEET 4

NOTE:
PLACE TEMPORARY ROCK SEDIMENT DAMS TYPE - B
AND TEMPORARY ROCK SILT CHECKS TYPE - A AT
DRAINAGE OUTLETS.

FOR -L- PROFILE SEE SHT. 10
FOR -RPC- PROFILE SEE SHT. 16
FOR -RPD- PROFILE SEE SHT. 17

RKK
P: (919) 878-9560
8601 Six Forks Road, Forum 1, Suite 700
Raleigh, North Carolina 27615-3960
NC License No. F-0112
Engineers | Construction Managers | Planners | Scientists
www.rkk.com
Responsive People | Creative Solutions

7/7/2023 R:\Highways\CAADD\PSH\Erosion_Control\I5972_EC_psh04.dgn