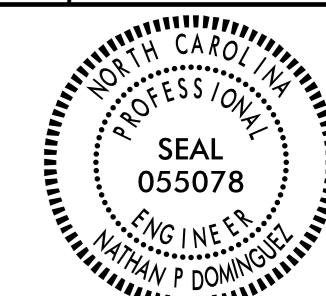
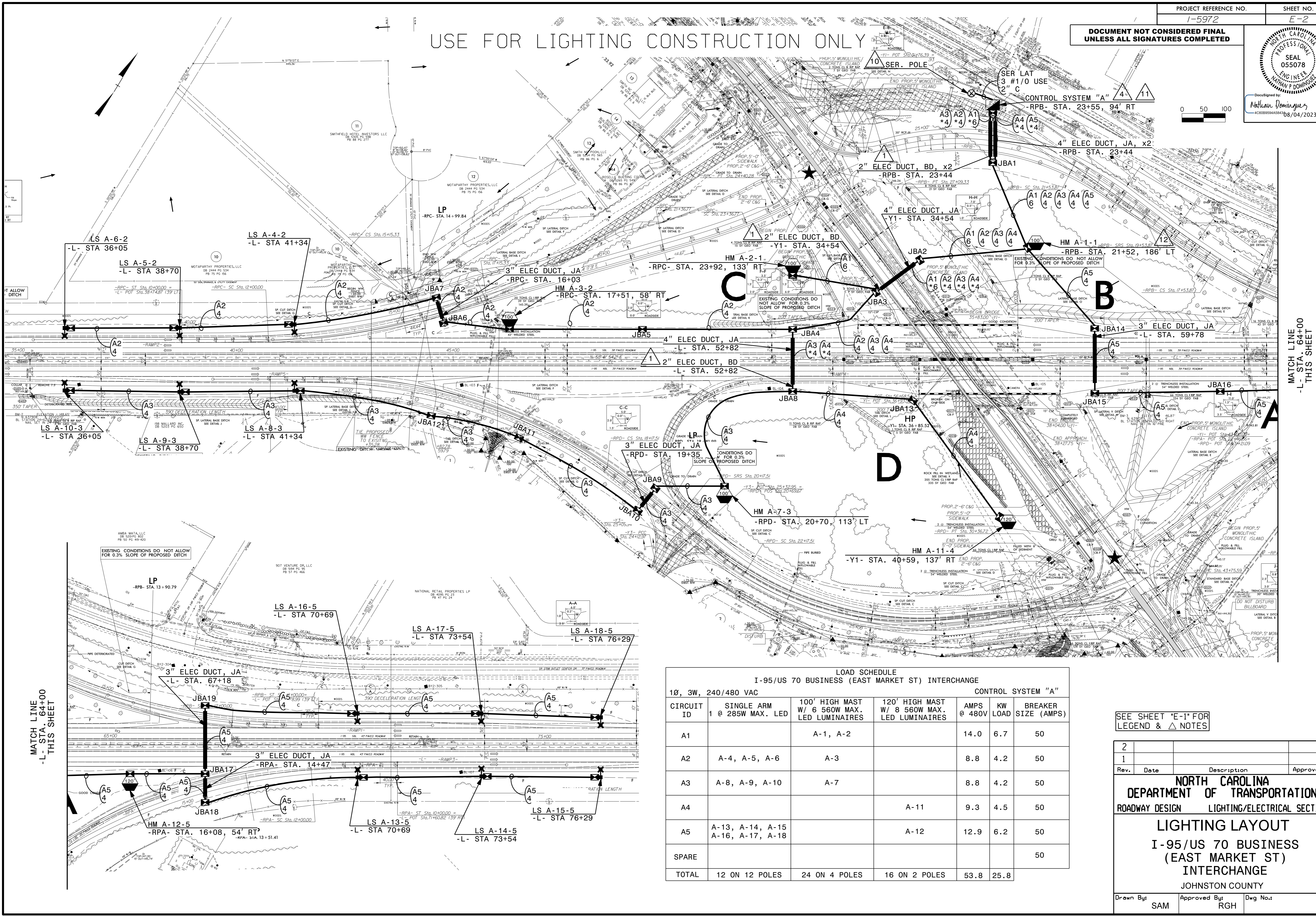


USE FOR LIGHTING CONSTRUCTION ONLY

DOCUMENT NOT CONSIDERED FINAL
UNLESS ALL SIGNATURES ARE PRESENT



Drawn By: Nathan Dominguez
Date: 08/04/2023



LOAD SCHEDULE I-95/US 70 BUSINESS (EAST MARKET ST) INTERCHANGE CONTROL SYSTEM "A"						
CIRCUIT ID	SINGLE ARM 1 @ 285W MAX. LED	100' HIGH MAST W/ 6 560W MAX. LED LUMINAIRES	120' HIGH MAST W/ 8 560W MAX. LED LUMINAIRES	AMPS @ 480V	KW LOAD	BREAKER SIZE (AMPS)
A1		A-1, A-2		14.0	6.7	50
A2	A-4, A-5, A-6	A-3		8.8	4.2	50
A3	A-8, A-9, A-10	A-7		8.8	4.2	50
A4			A-11	9.3	4.5	50
A5	A-13, A-14, A-15 A-16, A-17, A-18		A-12	12.9	6.2	50
SPARE						50
TOTAL	12 ON 12 POLES	24 ON 4 POLES	16 ON 2 POLES	53.8	25.8	

SEE SHEET "E-1" FOR
LEGEND & Δ NOTES

2			
1			
Rev.	Date	Description	Approved
NORTH CAROLINA DEPARTMENT OF TRANSPORTATION ROADWAY DESIGN LIGHTING/ELECTRICAL SECTION LIGHTING LAYOUT I-95/US 70 BUSINESS (EAST MARKET ST) INTERCHANGE JOHNSTON COUNTY			
Drawn By:	SAM	Approved By:	RGH
Dwg No.:			

21-JUN-2023 12:43
 R:\Lighting\Lighting Design\Lighting Files\15972-LE.PSH-E2.dgn
 somehtk HT RD-328813L

MATCH LINE
 -L- STA. 64+00
 THIS SHEET

MATCH LINE
 -L- STA. 64+00
 THIS SHEET