

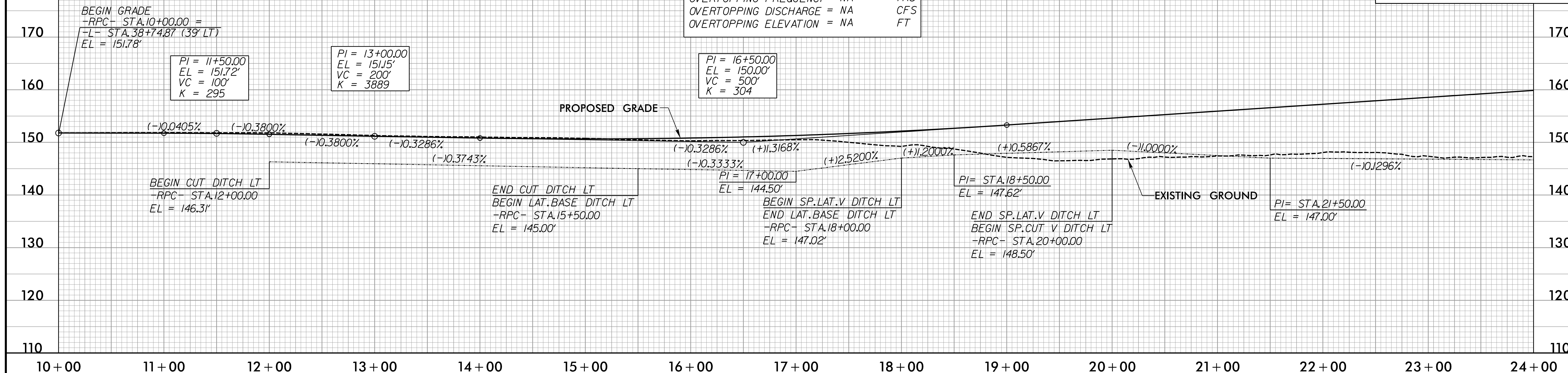
5/28/99

**-RPC-**

PROJECT REFERENCE NO. 1-5972	SHEET NO. 16
ROADWAY DESIGN ENGINEER 	HYDRAULICS ENGINEER 
<b>DOCUMENT NOT CONSIDERED FINAL UNLESS ALL SIGNATURES COMPLETED</b>	

**PIPE HYDRAULIC DATA**  
42" RCP-IV -RPC- STA.17+06

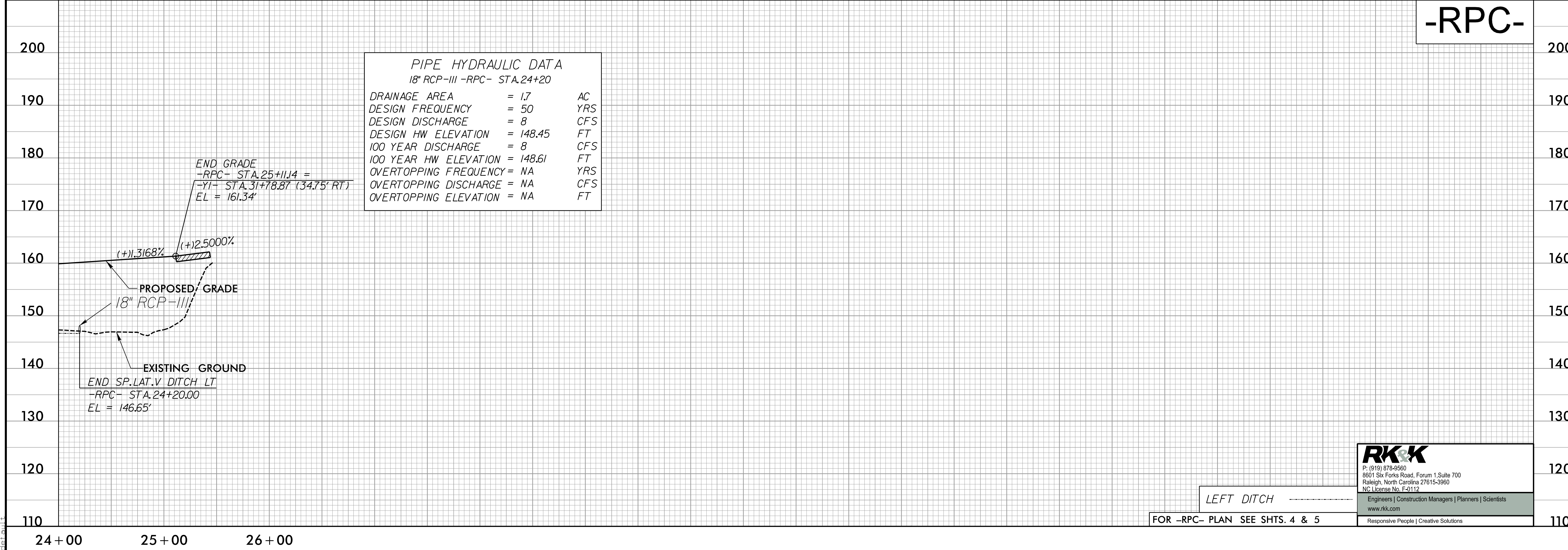
DRAINAGE AREA	= 211	AC
DESIGN FREQUENCY	= 50	YRS
DESIGN DISCHARGE	= 79	CFS
DESIGN HW ELEVATION	= 149.51	FT
100 YEAR DISCHARGE	= 85	CFS
100 YEAR HW ELEVATION	= 149.92	FT
OVERTOPPING FREQUENCY	= NA	YRS
OVERTOPPING DISCHARGE	= NA	CFS
OVERTOPPING ELEVATION	= NA	FT



**-RPC-**

**PIPE HYDRAULIC DATA**  
18" RCP-III -RPC- STA.24+20

DRAINAGE AREA	= 1.7	AC
DESIGN FREQUENCY	= 50	YRS
DESIGN DISCHARGE	= 8	CFS
DESIGN HW ELEVATION	= 148.45	FT
100 YEAR DISCHARGE	= 8	CFS
100 YEAR HW ELEVATION	= 148.61	FT
OVERTOPPING FREQUENCY	= NA	YRS
OVERTOPPING DISCHARGE	= NA	CFS
OVERTOPPING ELEVATION	= NA	FT



**RK&K**  
P: (919) 878-9560  
8801 Six Forks Road, Forum 1, Suite 700  
Raleigh, North Carolina 27615-3960  
NC License No. F-0112  
www.rkk.com  
Responsive People | Creative Solutions

LEFT DITCH  
FOR -RPC- PLAN SEE SHTS. 4 & 5

10/5/2023  
R:\Projects\15972-Rd\p116.dgn