

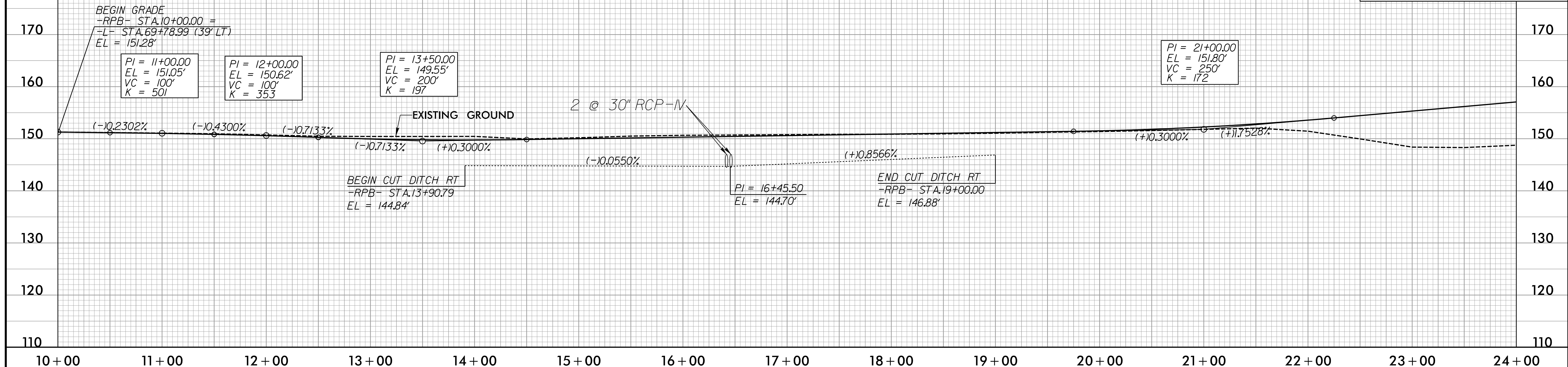
5/28/23

**PIPE HYDRAULIC DATA**  
2 @ 30" RCP-IV -RPB- STA.16+44

DRAINAGE AREA	= 13.7	AC
DESIGN FREQUENCY	= 50	YRS
DESIGN DISCHARGE	= 46	CFS
DESIGN HW ELEVATION	= 148.24	FT
100 YEAR DISCHARGE	= 49	CFS
100 YEAR HW ELEVATION	= 148.65	FT
OVERTOPPING FREQUENCY	= 100+/-	YRS
OVERTOPPING DISCHARGE	= 51	CFS
OVERTOPPING ELEVATION	= 148.6	FT

**-RPB-**

PROJECT REFERENCE NO.	1-5972	SHEET NO.	15
ROADWAY DESIGN ENGINEER		HYDRAULICS ENGINEER	
<b>DOCUMENT NOT CONSIDERED FINAL UNLESS ALL SIGNATURES COMPLETED</b>			



**PIPE HYDRAULIC DATA**  
30" RCP-III -RPB- STA.25+65

DRAINAGE AREA	= 4.3	AC
DESIGN FREQUENCY	= 50	YRS
DESIGN DISCHARGE	= 14	CFS
DESIGN HW ELEVATION	= 147.90	FT
100 YEAR DISCHARGE	= 15	CFS
100 YEAR HW ELEVATION	= 148.28	FT
OVERTOPPING FREQUENCY	= NA	YRS
OVERTOPPING DISCHARGE	= NA	CFS
OVERTOPPING ELEVATION	= NA	FT

**-RPB-**



**RK&K**  
P: (919) 878-9560  
8801 Six Forks Road, Forum 1, Suite 700  
Raleigh, North Carolina 27615-3960  
NC License No. F-0112  
Engineers | Construction Managers | Planners | Scientists  
www.rkk.com  
Responsive People | Creative Solutions

RIGHT DITCH .....  
FOR -RPB- PLAN SEE SHT. 5

10/5/2023 10:46:25 AM C:\Users\p115\dgn\105972-Rpb-p115.dgn