



5/28/99

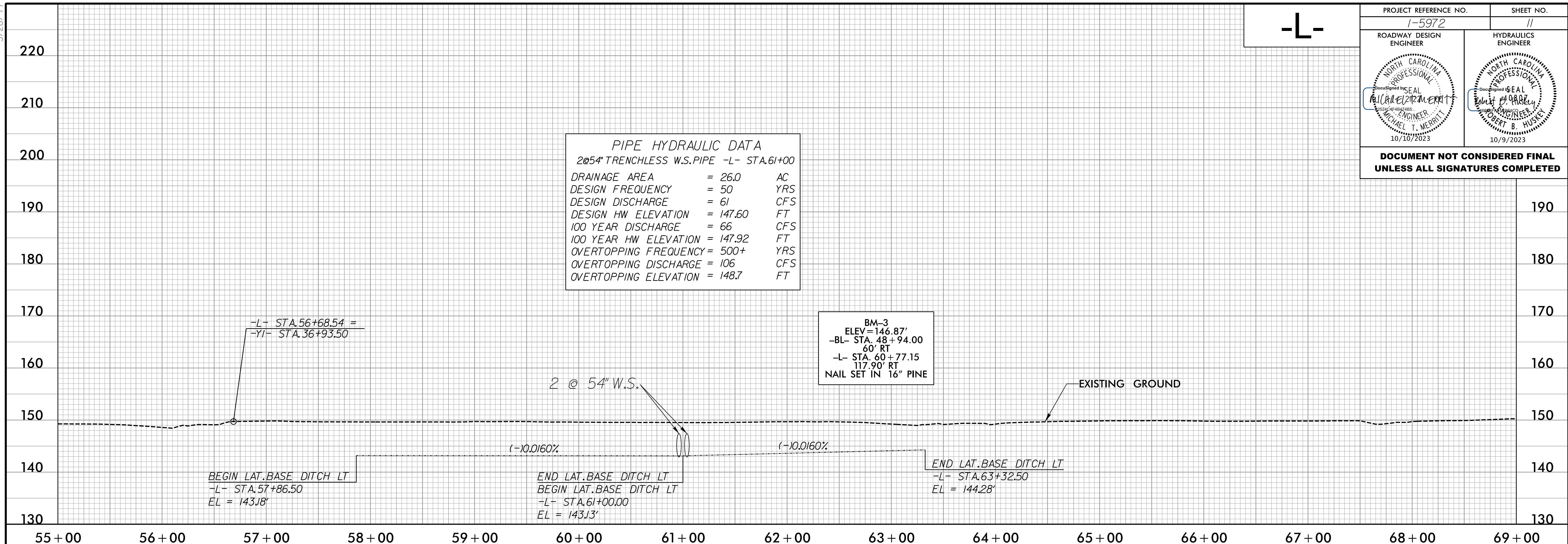
-L-

PROJECT REFERENCE NO. 1-5972	SHEET NO. 11
ROADWAY DESIGN ENGINEER 	HYDRAULICS ENGINEER 
<p>DOCUMENT NOT CONSIDERED FINAL UNLESS ALL SIGNATURES COMPLETED</p>	

PIPE HYDRAULIC DATA
 2@54" TRENCHLESS W.S. PIPE -L- STA. 61+00

DRAINAGE AREA	= 26.0	AC
DESIGN FREQUENCY	= 50	YRS
DESIGN DISCHARGE	= 61	CFS
DESIGN HW ELEVATION	= 147.60	FT
100 YEAR DISCHARGE	= 66	CFS
100 YEAR HW ELEVATION	= 147.92	FT
OVERTOPPING FREQUENCY	= 500+	YRS
OVERTOPPING DISCHARGE	= 106	CFS
OVERTOPPING ELEVATION	= 148.7	FT

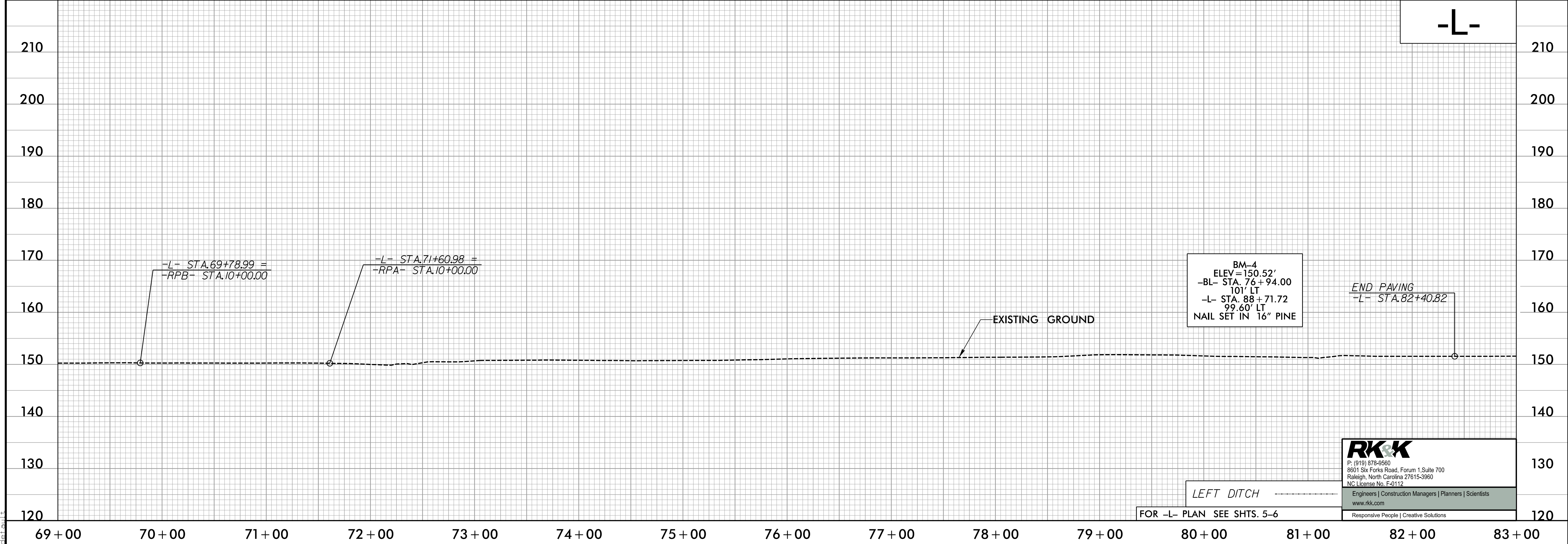
BM-3
 ELEV = 146.87'
 -BL- STA. 48+94.00
 60' RT
 -L- STA. 60+77.15
 117.90' RT
 NAIL SET IN 16" PINE



10/5/2023
 P:\Projects\15972-Rdwy-p\11.dgn
 dcf

-L-

BM-4
 ELEV = 150.52'
 -BL- STA. 76+94.00
 101' LT
 -L- STA. 88+71.72
 99.60' LT
 NAIL SET IN 16" PINE



RK&K
 P: (919) 878-9560
 8801 Six Forks Road, Forum 1, Suite 700
 Raleigh, North Carolina 27615-3960
 NC License No. F-0112
 Engineers | Construction Managers | Planners | Scientists
 www.rkk.com
 Responsive People | Creative Solutions

LEFT DITCH
 FOR -L- PLAN SEE SHTS. 5-6