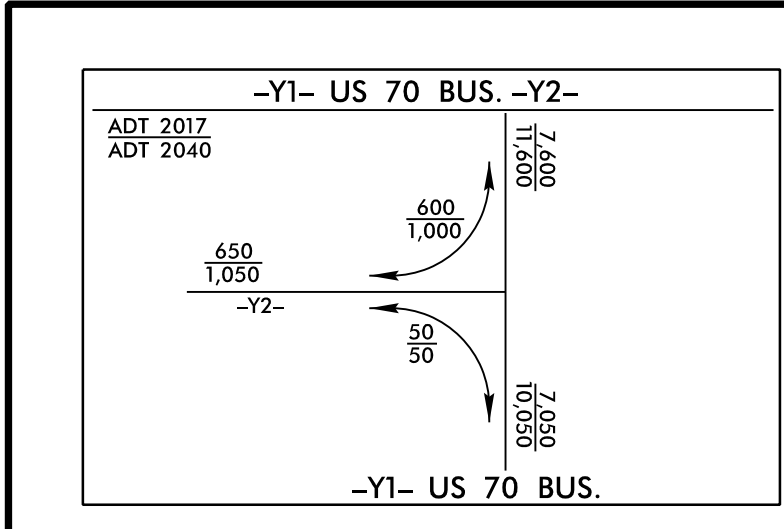
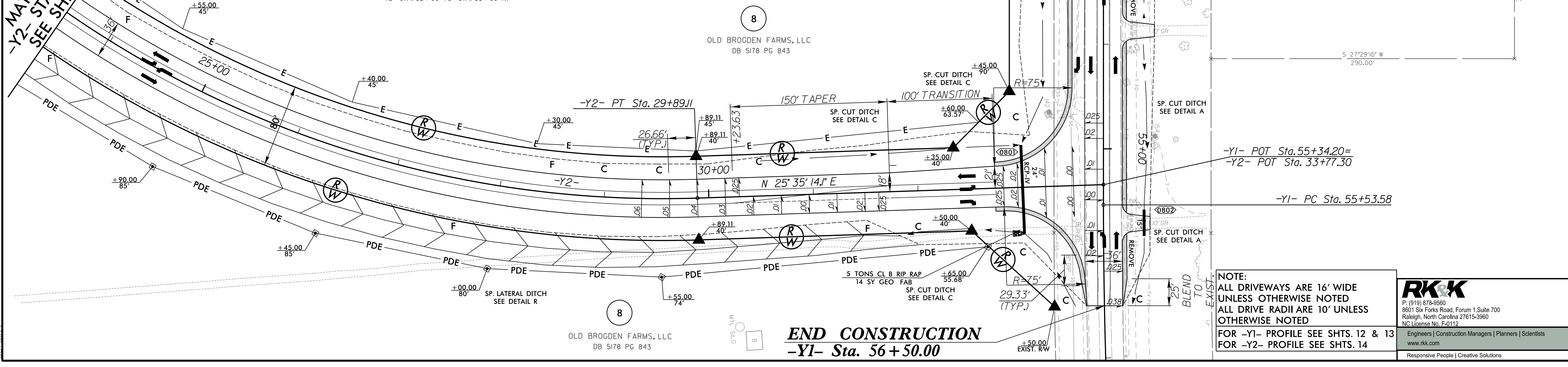
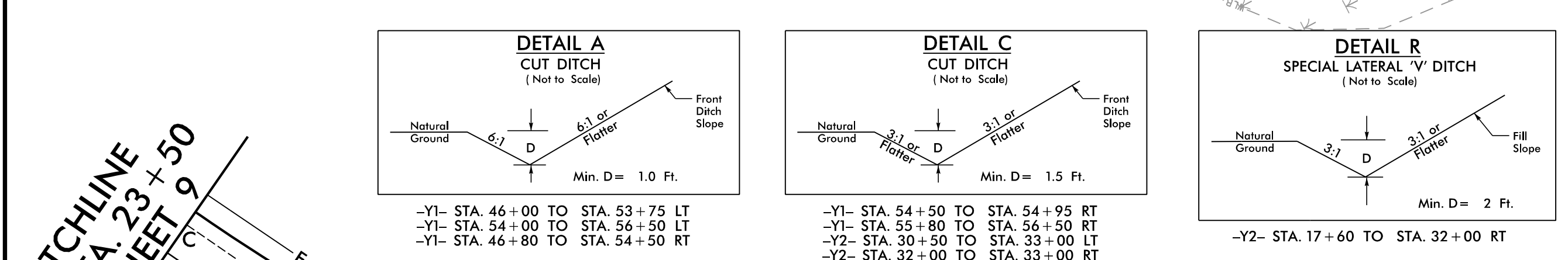


**DOCUMENT NOT CONSIDERED FINAL
UNLESS ALL SIGNATURES COMPLETED**

| -Y1- | |
|------------------------------|------------------------------|
| PI Sta 47+63.37 | PI Sta 58+74.92 |
| $\Delta = 5' 37" 12.9" (RT)$ | $\Delta = 7' 21" 16.3" (LT)$ |
| $D = 0' 43' 30.9"$ | $D = 1' 08' 45.3"$ |
| $L = 774.92'$ | $L = 641.80'$ |
| $T = 387.77'$ | $T = 321.34'$ |
| $R = 7,900.00'$ | $R = 5,000.00'$ |
| | $Se = EXIST.$ |
| -Y2- | |
| PI Sta 24+96.11 | |
| $\Delta = 6' 09' 43.2" (LT)$ | |
| $D = 5' 43' 46.5"$ | |
| $L = 1,119.84'$ | |
| $T = 626.84'$ | |
| $R = 1,000.00'$ | |
| | $Se = 0.06$ |



MATCHLINE -Y1- STA. 47+00 SEE SHEET 5



8/17/99
 10/5/2023
 R:\Roadway\Proj\15972_Rdy_psh08.dgn
 Detail

NOTE:
 ALL DRIVEWAYS ARE 16' WIDE
 UNLESS OTHERWISE NOTED
 ALL DRIVE RADII ARE 10' UNLESS
 OTHERWISE NOTED
 FOR -Y1- PROFILE SEE SHTS. 12 & 13
 FOR -Y2- PROFILE SEE SHTS. 14

RK&K
 P: (919) 878-9560
 8601 Six Forks Road, Forum 1, Suite 700
 Raleigh, North Carolina 27615-3960
 NC License No. F-0112
 Engineers | Construction Managers | Planners | Scientists
 www.rkk.com
 Responsive People | Creative Solutions