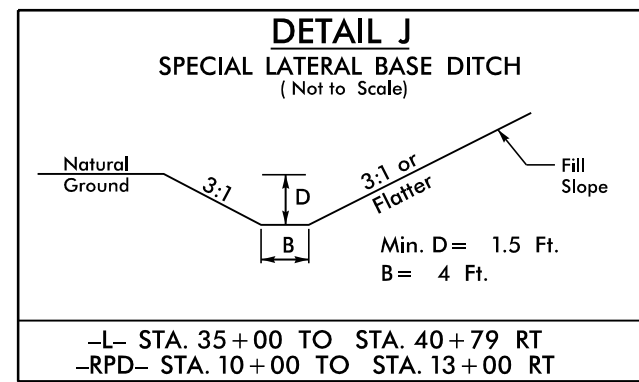
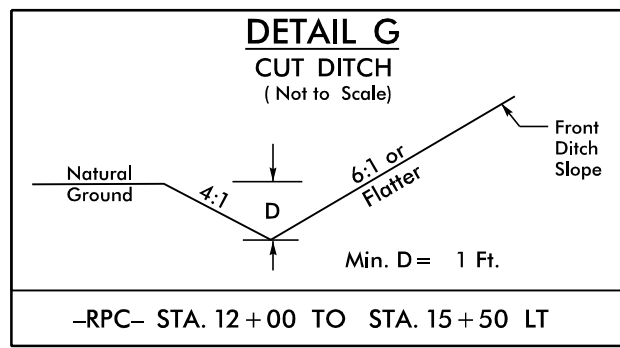
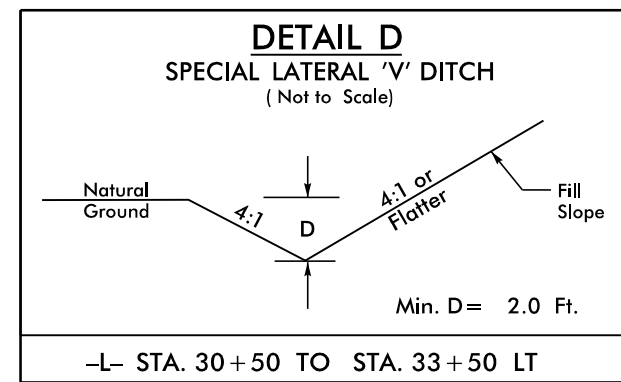


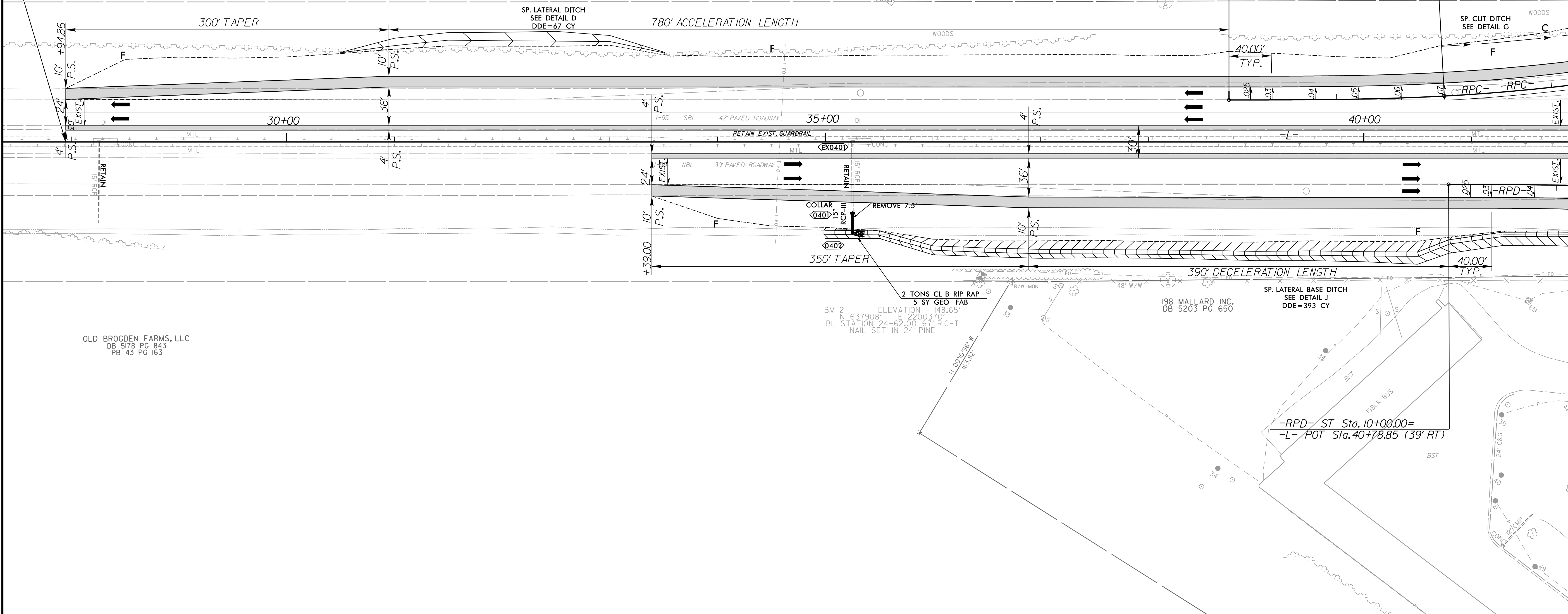
8/17/99

-RPC-		-RPD-	
PIs Sta 11+33.35	PI Sta 13+58.05	PIs Sta 11+33.38	
$\theta_s = 3'05'49.4"$	$\Delta = 10'00'40.9" (LT)$	$\theta_s = 4'46'28.7"$	
$L_s = 200.00'$	$D = 3'05'49.4"$	$L_s = 200.00'$	
$LT = 133.35'$	$L = 323.25'$	$LT = 133.38'$	
$ST = 66.69'$	$T = 162.04'$	$ST = 66.71'$	
	$R = 1,850.00'$		
	$Se = 0.07$		



PROJECT REFERENCE NO. 1-5972	SHEET NO. 4
RW SHEET NO.	
ROADWAY DESIGN ENGINEER	HYDRAULICS ENGINEER
DOCUMENT NOT CONSIDERED FINAL UNLESS ALL SIGNATURES COMPLETED	

**BEGIN CONSTRUCTION**  
**BEGIN TIP PROJECT I-5972**  
**-L- Sta. 27+94.86**



MATCHLINE -L- STA. 42+00 SEE SHEET 5

10/5/2023 R:\Roadway\Proj\15972\_Rdy.psh04.dgn

FOR -L- PROFILE SEE SHT. 10  
FOR -RPC- PROFILE SEE SHT. 16  
FOR -RPD- PROFILE SEE SHT. 17

**RK&K**  
P. (919) 878-9560  
8601 Six Forks Road, Forum 1, Suite 700  
Raleigh, North Carolina 27615-3960  
NC License No. F-0112  
Engineers | Construction Managers | Planners | Scientists  
www.rkk.com  
Responsive People | Creative Solutions