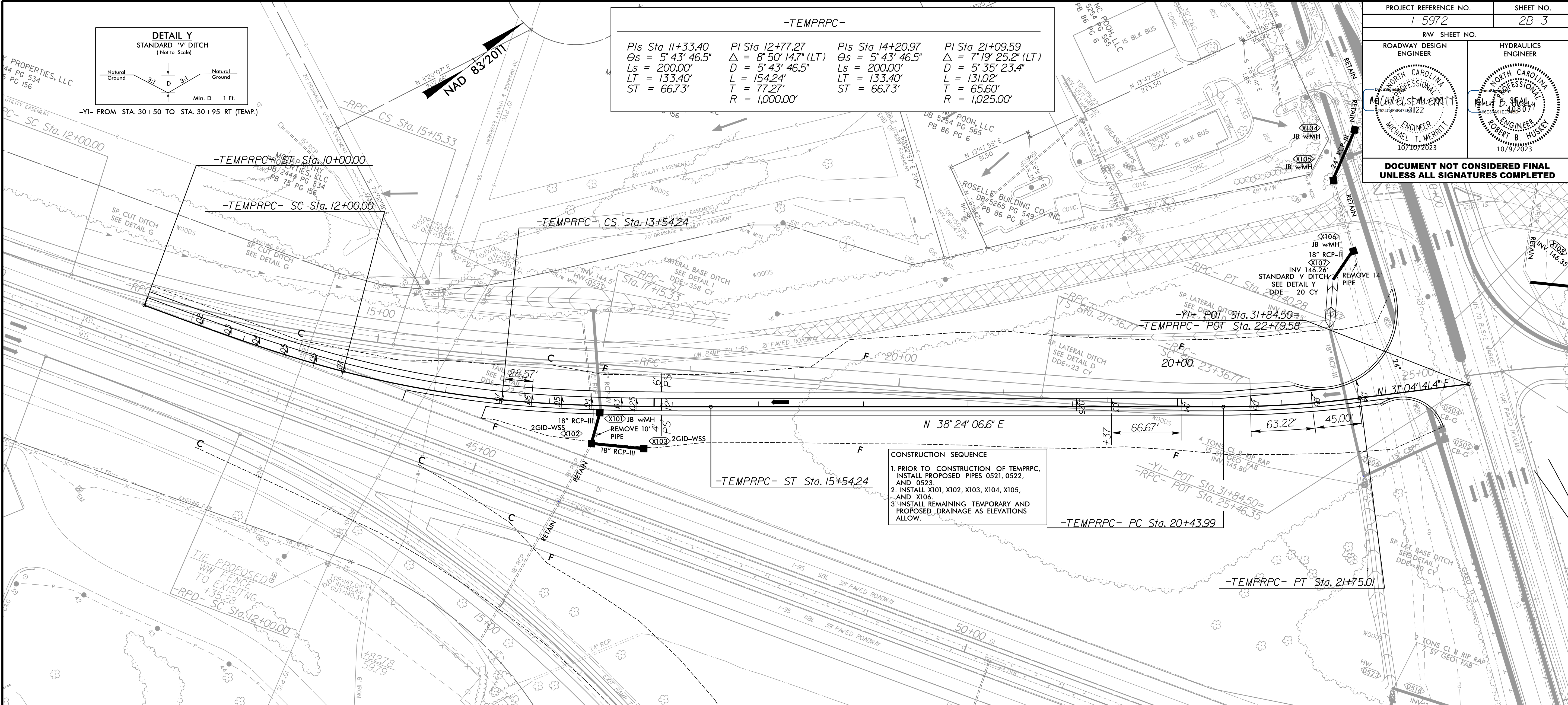
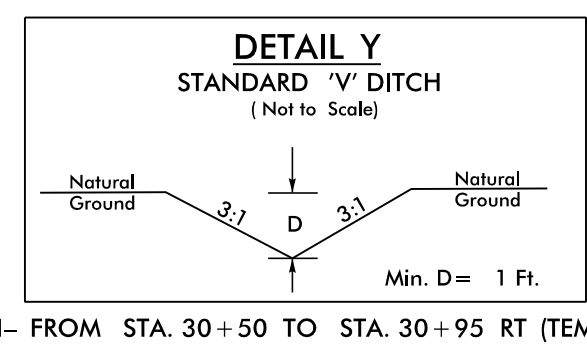


DOCUMENT NOT CONSIDERED FINAL  
UNLESS ALL SIGNATURES COMPLETED

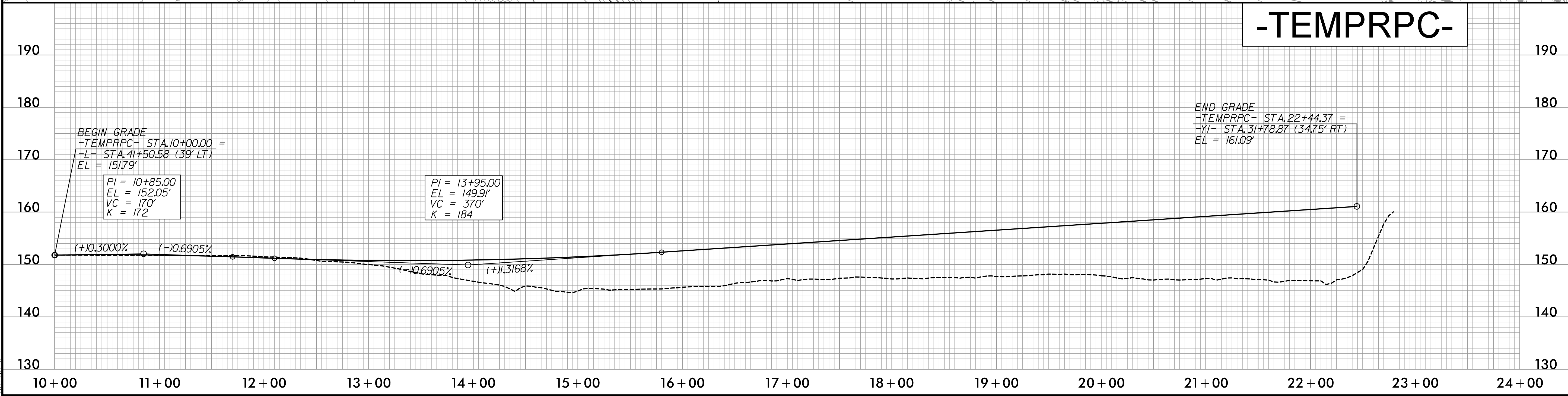
**-TEMPRPC-**

PIs Sta 11+33.40 θs = 5° 43' 46.5" Ls = 200.00' LT = 133.40' ST = 66.73'	PI Sta 12+77.27 Δ = 8° 50' 14.7" (LT) D = 5° 43' 46.5" L = 154.24' T = 77.27' R = 1,000.00'	PIs Sta 14+20.97 θs = 5° 43' 46.5" Ls = 200.00' LT = 133.40' ST = 66.73'	PI Sta 21+09.59 Δ = 7° 19' 25.2" (LT) D = 5° 35' 23.4" L = 131.02' T = 65.60' R = 1,025.00'
--	--	--	--



**CONSTRUCTION SEQUENCE**

1. PRIOR TO CONSTRUCTION OF TEMP RPC, INSTALL PROPOSED PIPES 0521, 0522, AND 0523.
2. INSTALL X101, X102, X103, X104, X105, AND X106.
3. INSTALL REMAINING TEMPORARY AND PROPOSED DRAINAGE AS ELEVATIONS ALLOW.



8/17/199  
 10/5/2023  
 R:\Roadway\Pro\15972\_Rdy\_psh\02B\_3.dgn