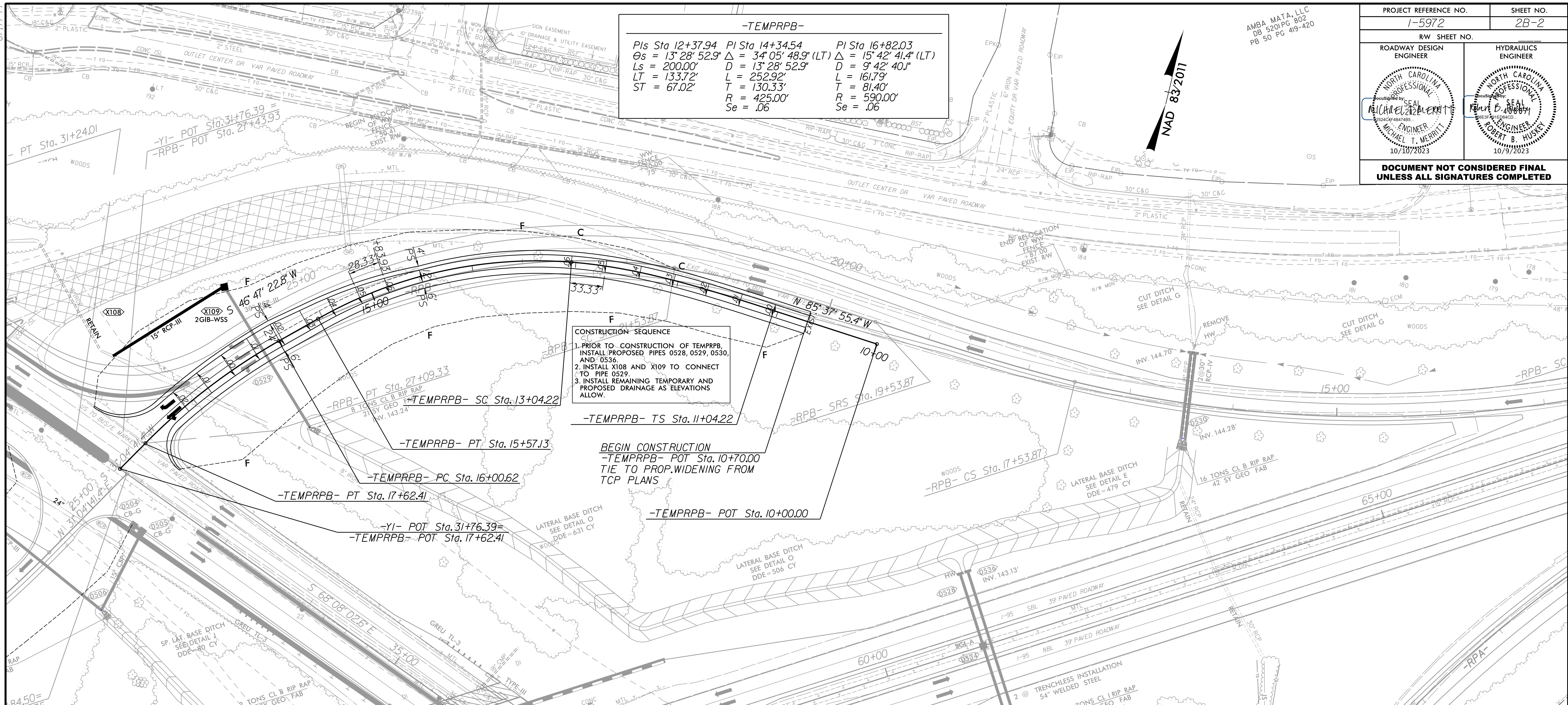
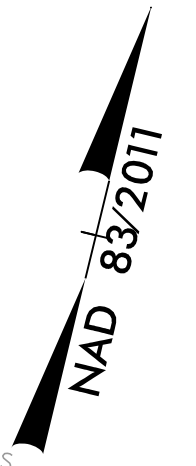


-TEMPRPB-

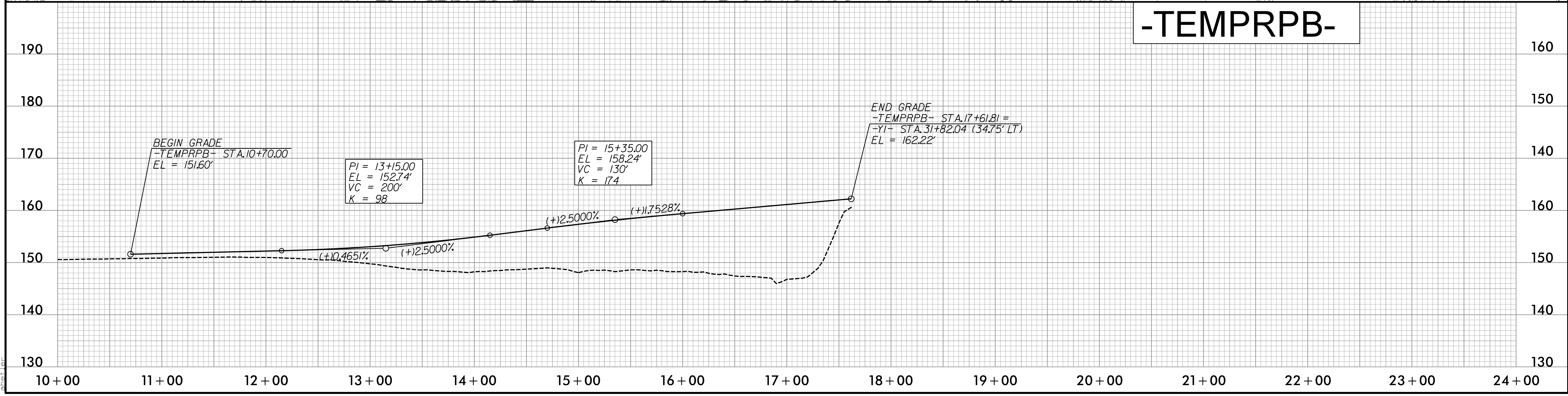
PIs Sta 12+37.94	PI Sta 14+34.54	PI Sta 16+82.03
$\Theta_s = 13^\circ 28' 52.9"$	$\Delta = 34^\circ 05' 48.9" (LT)$	$\Delta = 15^\circ 42' 41.4" (LT)$
$L_s = 200.00'$	$D = 13^\circ 28' 52.9"$	$D = 9^\circ 42' 40.1"$
$LT = 133.72'$	$L = 252.92'$	$L = 161.79'$
$ST = 67.02'$	$T = 130.33'$	$T = 81.40'$
	$R = 425.00'$	$R = 590.00'$
	$Se = .06$	$Se = .06$



CONSTRUCTION SEQUENCE

1. PRIOR TO CONSTRUCTION OF TEMP RPB, INSTALL PROPOSED PIPES 0528, 0529, 0530, AND 0536.
2. INSTALL X108 AND X109 TO CONNECT TO PIPE 0529.
3. INSTALL REMAINING TEMPORARY AND PROPOSED DRAINAGE AS ELEVATIONS ALLOW.

BEGIN CONSTRUCTION
 -TEMPRPB- POT Sta. 10+70.00
 TIE TO PROP. WIDENING FROM TCP PLANS



10/5/2023
 R:\Projects\15972_Rd\psh02B.dgn
 psh02B.dwg