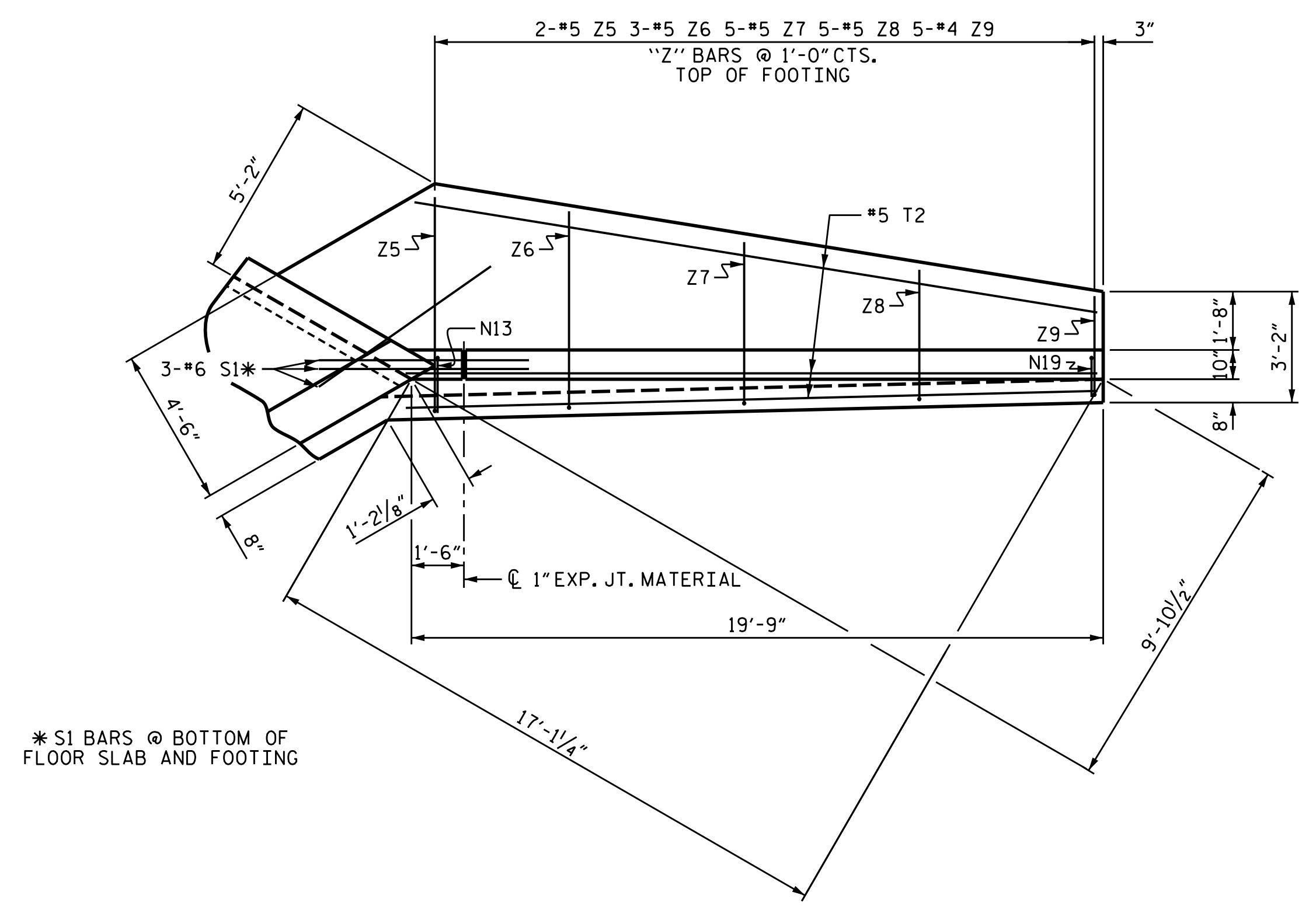


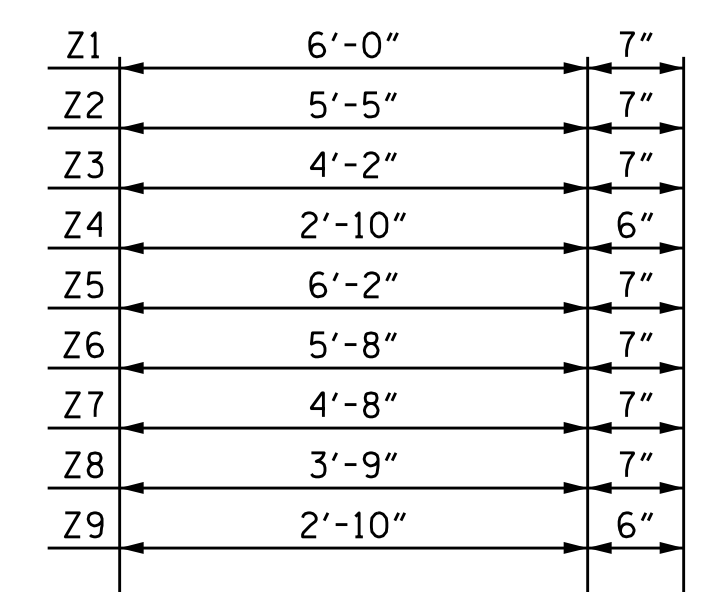
5/14/2023 4:21:13 PM jgeile



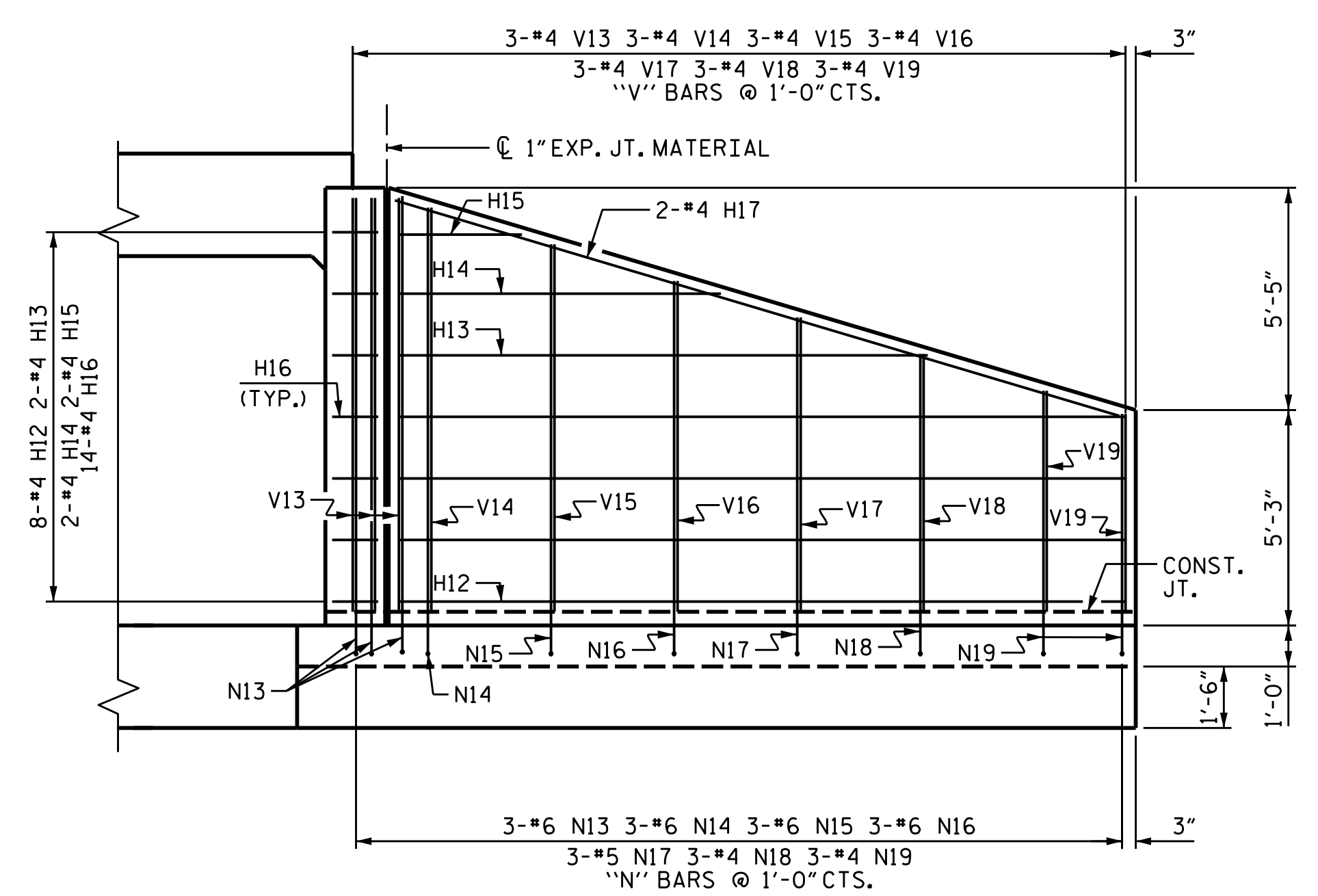
* S1 BARS @ BOTTOM OF FLOOR SLAB AND FOOTING

PLAN W4

BAR TYPES						BILL OF MATERIAL					
BAR	NO.	SIZE	TYPE	LENGTH	WEIGHT	BAR	NO.	SIZE	TYPE	LENGTH	WEIGHT
H1	16	#4	STR	9'-3"	99	T1	6	#5	STR	11'-3"	71
H2	4	#4	STR	6'-9"	19	T2	6	#5	STR	19'-9"	124
H3	4	#4	STR	4'-1"	11						
H4	28	#4	2	3'-3"	61	V1	4	#4	STR	10'-2"	28
H5	4	#4	STR	10'-6"	29	V2	4	#4	STR	9'-4"	25
H6	8	#4	STR	17'-8"	95	V3	4	#4	STR	8'-3"	23
H7	2	#4	STR	15'-10"	22	V4	4	#4	STR	7'-2"	20
H8	2	#4	STR	9'-8"	13	V5	4	#4	STR	6'-1"	17
H9	2	#4	STR	3'-6"	5	V6	4	#4	STR	5'-0"	14
H10	14	#4	1	3'-3"	31	V7	2	#4	STR	10'-2"	14
H11	2	#4	STR	18'-2"	25	V8	3	#4	STR	9'-8"	20
H12	8	#4	STR	17'-8"	95	V9	4	#4	STR	8'-8"	24
H13	2	#4	STR	12'-10"	18	V10	4	#4	STR	7'-8"	21
H14	2	#4	STR	7'-10"	11	V11	4	#4	STR	6'-9"	19
H15	2	#4	STR	3'-0"	5	V12	4	#4	STR	5'-9"	16
H16	14	#4	1	3'-3"	31	V13	3	#4	STR	10'-1"	21
H17	2	#4	STR	18'-5"	25	V14	3	#4	STR	9'-3"	19
						V15	3	#4	STR	8'-4"	17
N1	4	#6	3	12'-2"	74	V16	3	#4	STR	7'-5"	15
N2	4	#6	3	11'-4"	69	V17	3	#4	STR	6'-7"	14
N3	4	#6	3	10'-3"	62	V18	3	#4	STR	5'-8"	12
N4	4	#5	3	9'-2"	39	V19	3	#4	STR	4'-9"	10
N5	4	#4	3	8'-1"	22						
N6	4	#4	3	7'-0"	19	Z1	4	#5	4	6'-7"	28
N7	2	#6	3	12'-2"	37	Z2	4	#5	4	6'-0"	26
N8	3	#6	3	11'-8"	53	Z3	8	#5	4	4'-9"	40
N9	4	#6	3	10'-9"	65	Z4	8	#4	4	3'-4"	18
N10	4	#5	3	9'-9"	41	Z5	4	#5	4	6'-9"	29
N11	4	#4	3	8'-9"	24	Z6	6	#5	4	6'-3"	40
N12	4	#4	3	7'-10"	21	Z7	10	#5	4	5'-3"	55
N13	3	#6	3	12'-1"	55	Z8	10	#5	4	4'-4"	46
N14	3	#6	3	11'-3"	51	Z9	10	#4	4	3'-4"	23
N15	3	#6	3	10'-5"	47						
N16	3	#6	3	9'-6"	43						
N17	3	#5	3	8'-7"	27						
N18	3	#4	3	7'-9"	16						
N19	3	#4	3	6'-10"	14						
S1	12	#6	STR	6'-0"	109						



ALL BAR DIMENSIONS ARE OUT TO OUT.



ELEVATION W4

PROJECT NO. R-3833C
 IREDELL COUNTY
 STATION: 36+00.33 -L-

STATE OF NORTH CAROLINA
 DEPARTMENT OF TRANSPORTATION
 RALEIGH

WINGS FOR CONCRETE BOX CULVERT
 H = 9'-0" SLOPE = 2:1
 60° SKEW

REVISIONS						SHEET NO.	
NO.	BY:	DATE:	NO.	BY:	DATE:	C-16	
1			3			TOTAL SHEETS	16
2			4				

DRAWN BY: J. B. GETILE DATE: 08/01/19
 CHECKED BY: M. B. ISENHOUR DATE: 02/06/20
 DESIGN ENGINEER OF RECORD: M. B. ISENHOUR DATE: 05/04/23

Stantec Consulting Services Inc.
 801 Jones Franklin Road
 Suite 300
 Raleigh, NC 27606
 Tel. (919) 851-6866
 Fax. (919) 851-7024
 www.stantec.com
 License No. F-0672

DOCUMENT NOT CONSIDERED FINAL UNLESS ALL SIGNATURES COMPLETED

U:\Structures\Culvert\Drawings\38333C_SML_CU_016.dgn