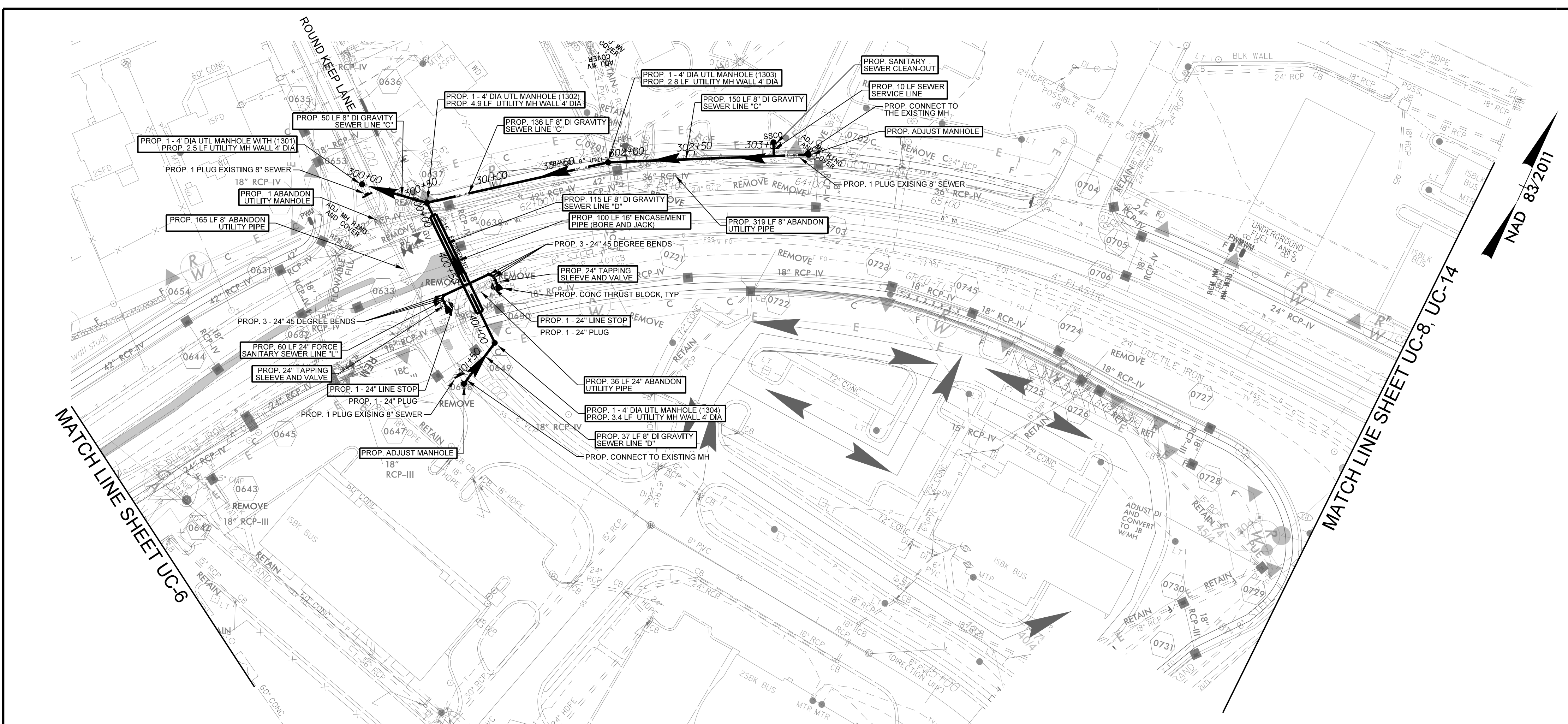
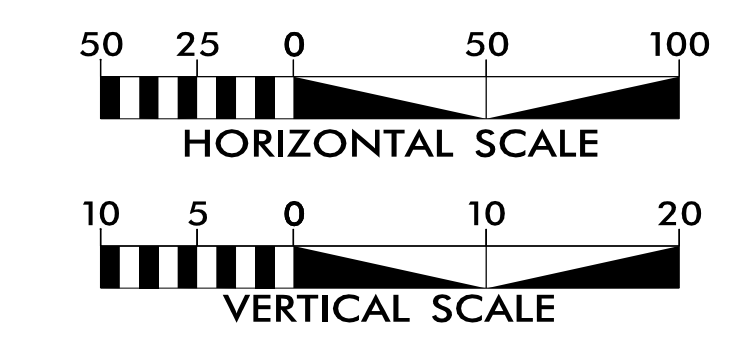


**Stantec**  
 Stantec Consulting Services Inc.  
 801 Jones Franklin Road  
 Suite 300  
 Raleigh, NC 27606  
 Tel. (919) 851-6866  
 Fax. (919) 851-7024  
 www.stantec.com  
 License No. F-0672

PROJECT REFERENCE NO.	R-3833C
SHEET NO.	UC-13
DESIGNED BY:	LLP
DRAWN BY:	RCR
CHECKED BY:	LLP
APPROVED BY:	
REVISED:	
NORTH CAROLINA PROFESSIONAL SEAL 23500 8/24/2023 NORTH CAROLINA DEPARTMENT OF TRANSPORTATION UTILITIES ENGINEERING SEC. PHONE: (919) 707-6690 FAX: (919) 250-4151	
UTILITY CONSTRUCTION PLANS ONLY	



### UTILITY CONSTRUCTION



- GENERAL NOTES
1. PROVIDE WASTEWATER BYPASS PUMPING TO MAINTAIN SEWERS IN SERVICE AT ALL TIMES.
  2. ALL GRAVITY SEWERS AND FORCE SANITARY SEWER MAINS AND FITTINGS SHALL BE DUCTILE IRON WITH AN INTERIOR LINING OF CERAMIC EPOXY.

NOTES:  
 THE ESTIMATED QUANTITY OF DUCTILE IRON WATER PIPE FITTINGS ON THIS PLAN SHEET IS 5335 POUNDS. THE ACTUAL QUANTITY AND TYPE OF FITTINGS WILL VARY BASED ON FIELD CONDITIONS.

