

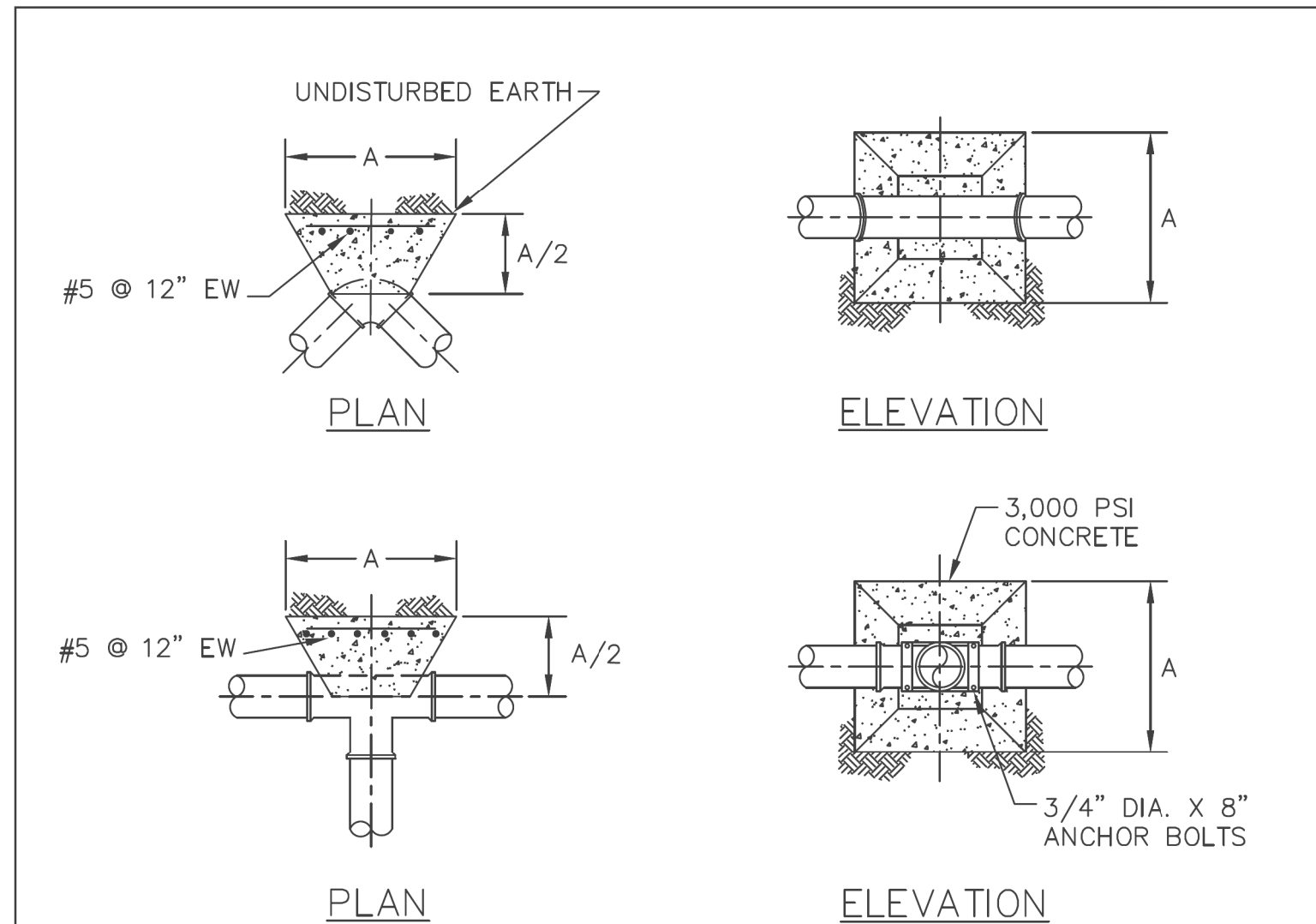
PROJECT TYPICAL DETAILS



Stantec Consulting Services Inc.
 801 Jones Franklin Road
 Suite 300
 Raleigh, NC 27606
 Tel. (919) 851-6866
 Fax. (919) 851-7024
 www.stantec.com
 License No. F-0672

PROJECT REFERENCE NO.	R-3833C	SHEET NO.	UC-03C
DESIGNED BY:	MCM		
DRAWN BY:	RGR/MCM		
CHECKED BY:	MCM		
APPROVED BY:			
REVISED:			
UTILITIES ENGINEERING SEC.	PHONE: (919) 707-6690	UTILITY CONSTRUCTION PLANS ONLY	
	FAX: (919) 250-4151		

UTILITY CONSTRUCTION



NOTES:

1. ALL FACES OF THE BLOCK SHALL REST AGAINST UNDISTURBED SOIL.
2. PIPE JOINTS, BOLTS, NUTS, RETAINER GLANDS ARE NOT TO BE ENCASED IN CONCRETE.
3. DIMENSIONS BASED ON 150 PSI TEST PRESSURE 1,000 PSF BEARING CAPACITY.
4. THRUST BLOCKS ARE ALLOWED ONLY WHEN THERE IS NOT ENOUGH PIPE LENGTH TO PROVIDE SUFFICIENT THRUST RESTRAINT VIA RESTRAINED JOINT PIPE, OR WHEN CONNECTING TO AN EXISTING PIPE THAT IS NOT RESTRAINED JOINT.

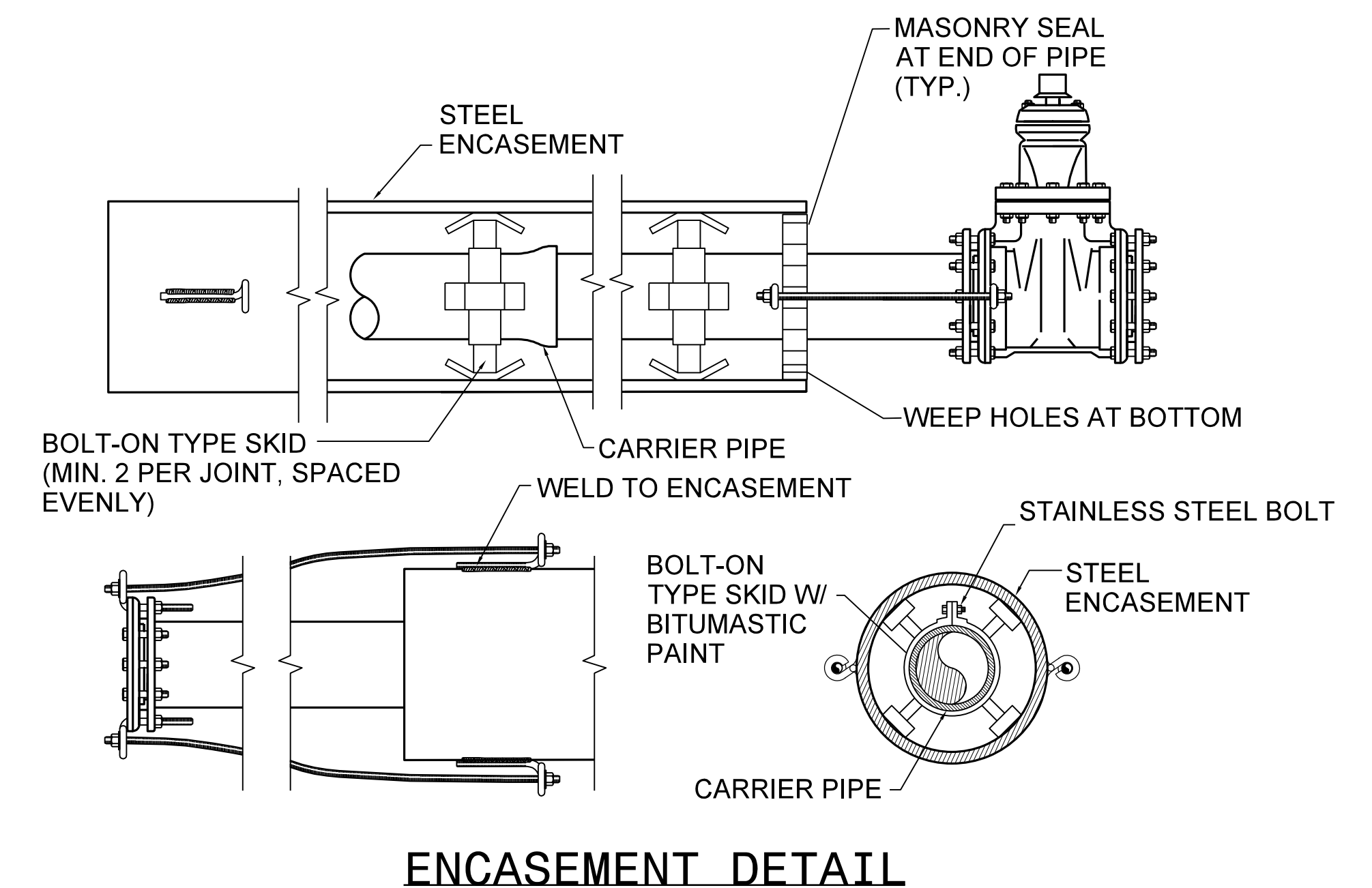
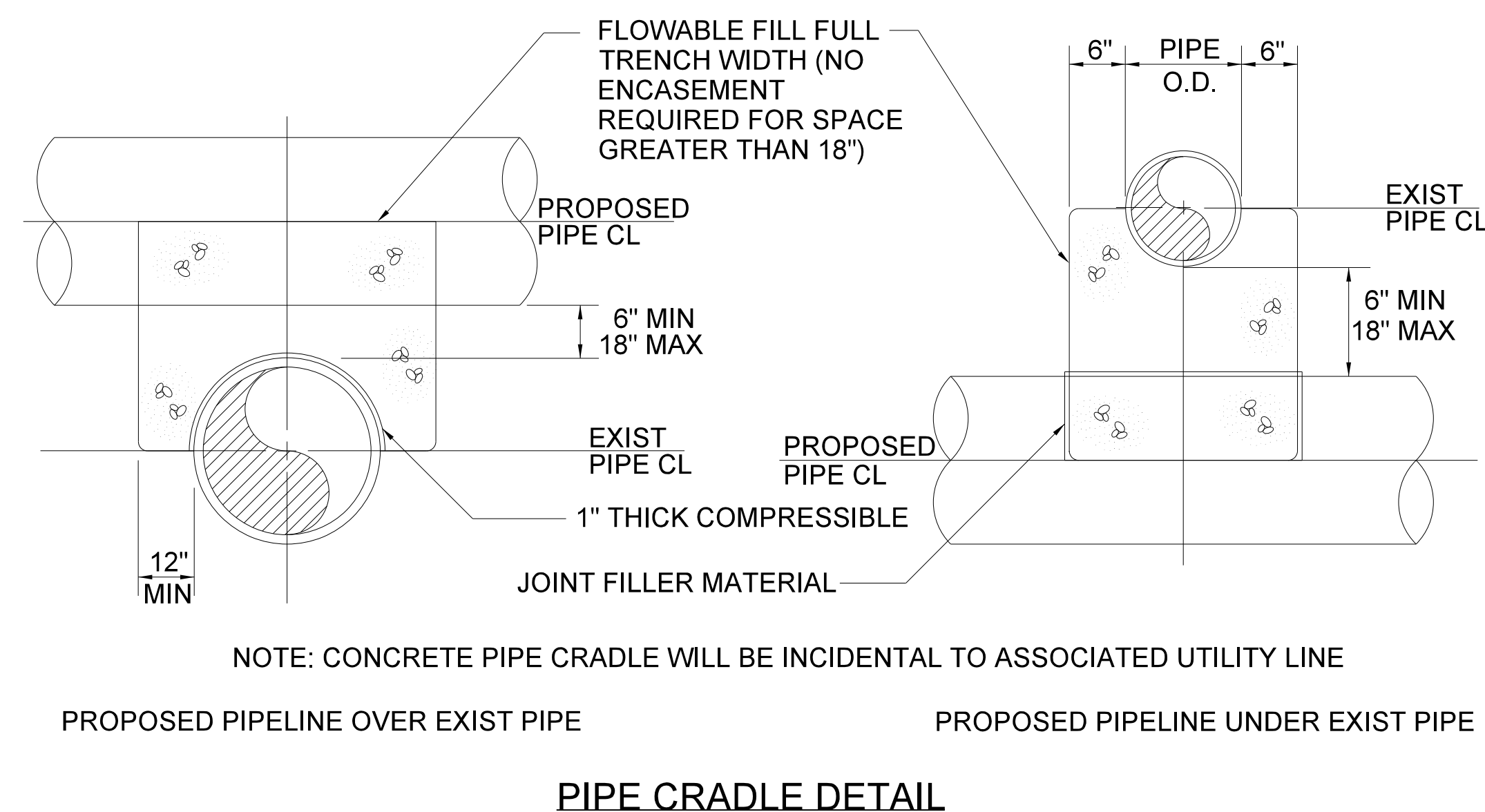
FITTING	DIMENSION "A"			
	PIPE SIZE			
	4"	6"	8"	12"
11 1/4 BEND	1'-6"	1'-6"	1'-6"	2'-0"
22 1/2 BEND	1'-6"	1'-6"	2'-0"	2'-8"
45 BEND	1'-6"	2'-0"	2'-6"	3'-8"
90 BEND	1'-8"	2'-6"	3'-4"	5'-0"
TEE	1'-8"	2'-6"	3'-4"	5'-0"



TOWN OF MOORESVILLE
 STANDARD DETAIL

WATER SYSTEMS
 THRUST BLOCK

January 2009
 Revision 1
 NTS W - 6.0



8/28/2023
 C:\Users\lamba\Documents\Projects\UC\ProJ\R3833C\ut-dtl\UC03c.dgn
 lamamba