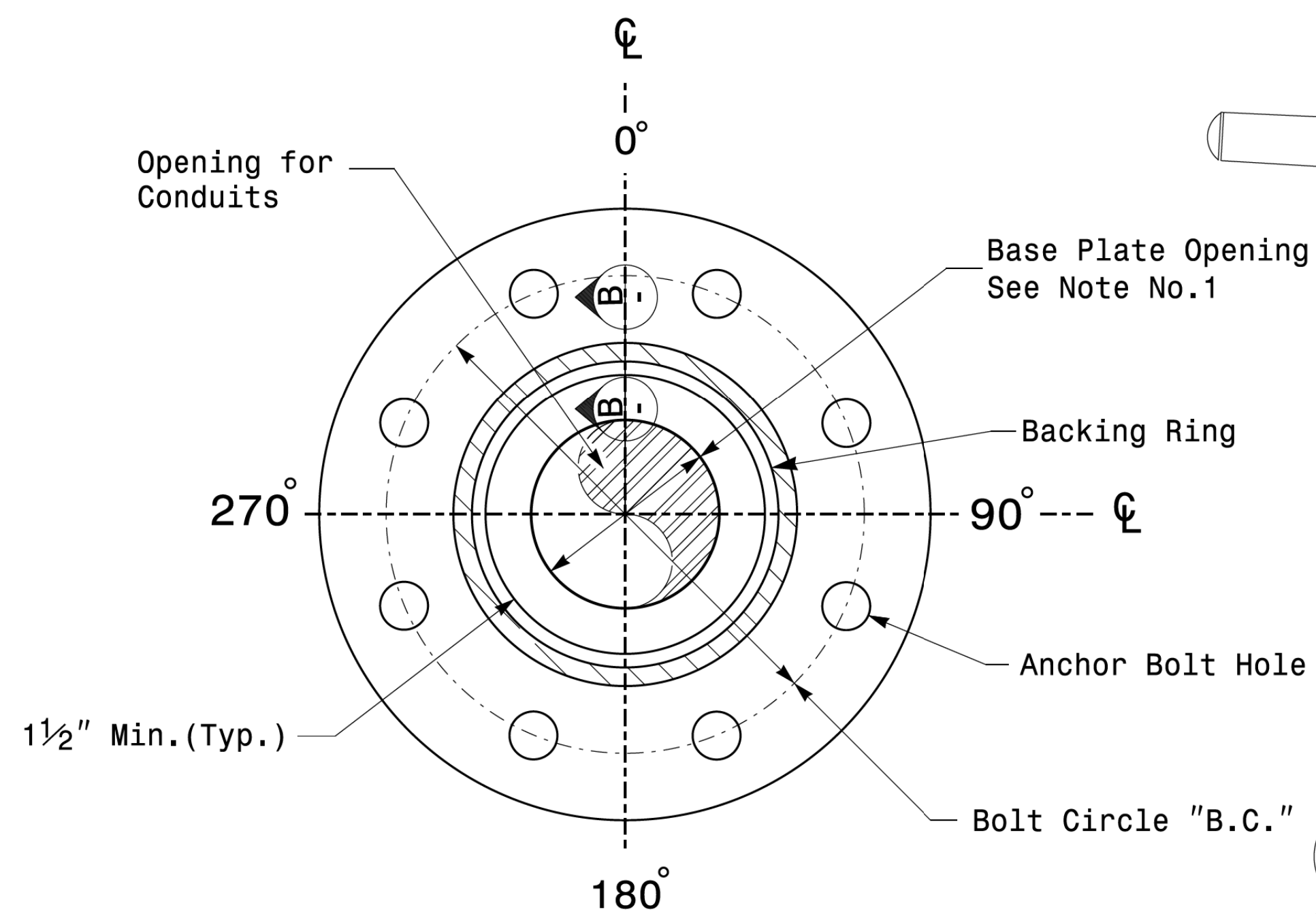
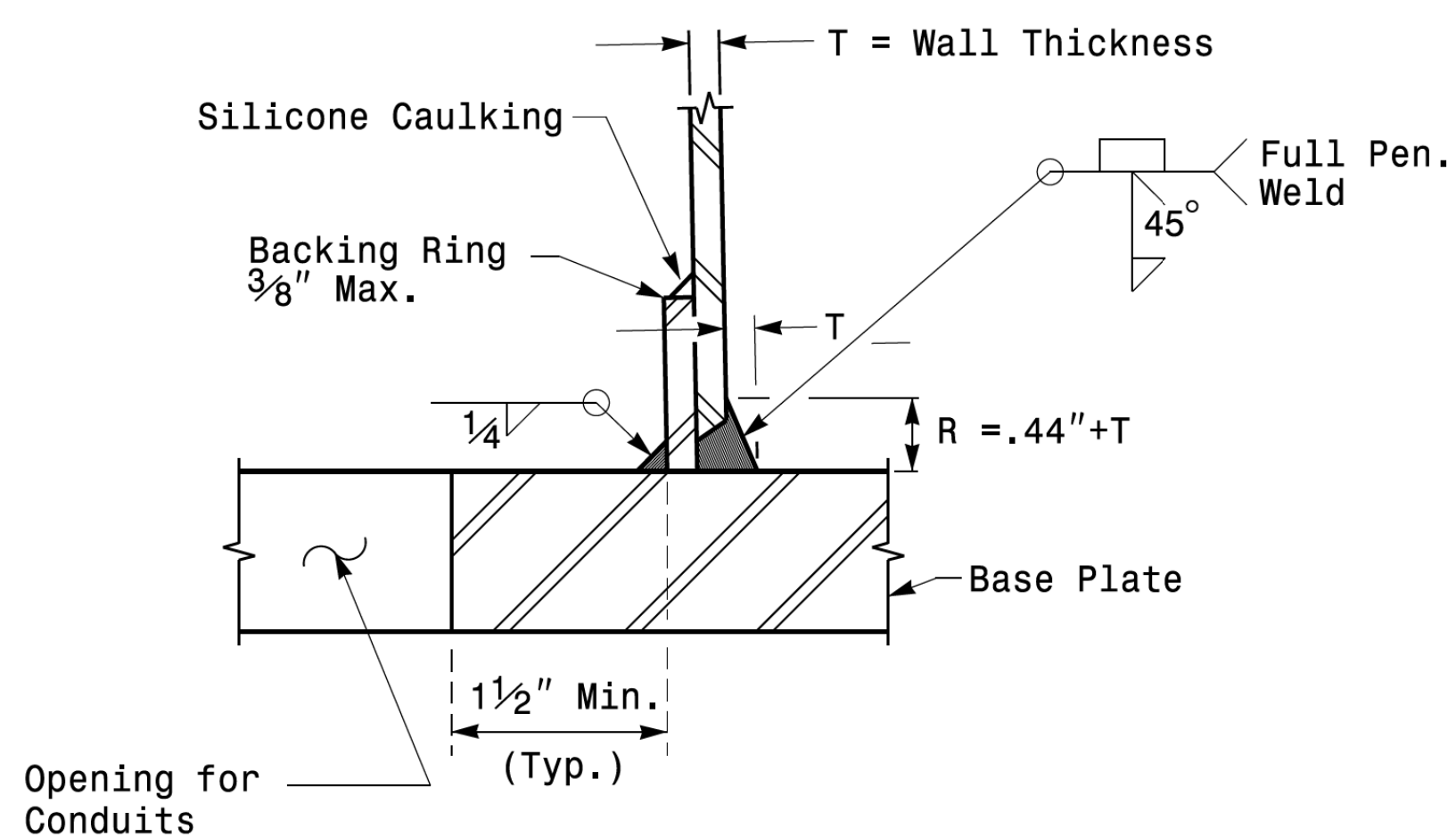


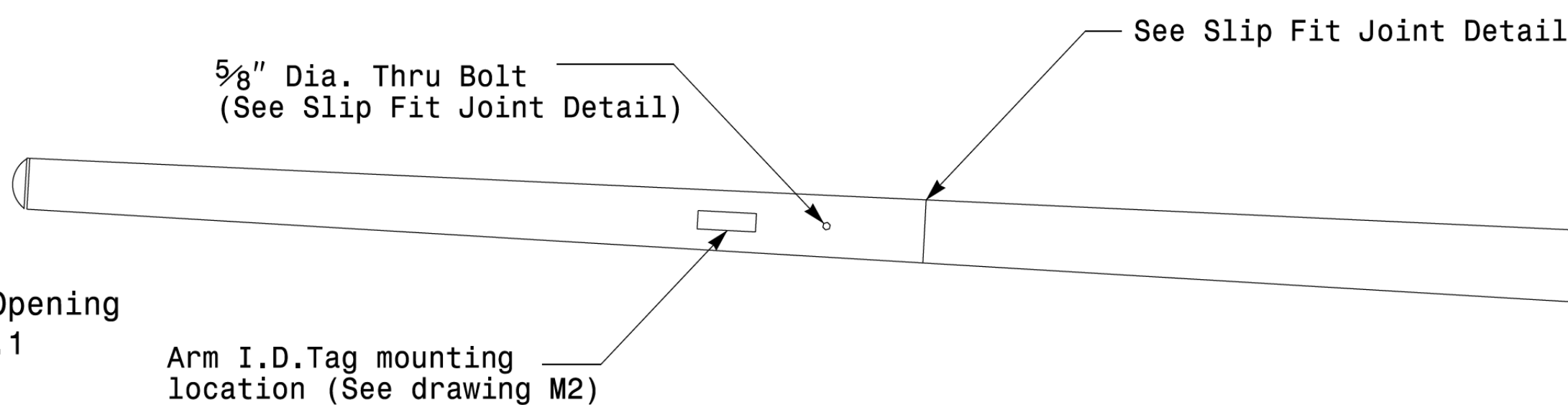
Note:
 1. Opening in pole base plate shall be equal to pole base inside diameter minus 3 1/2" but shall not be less than 8 1/2".



Section A-A
Pole Base Plate Details



Section B-B
 (Pole Attachment to Base Plate)
Full-Penetration Groove Weld Detail



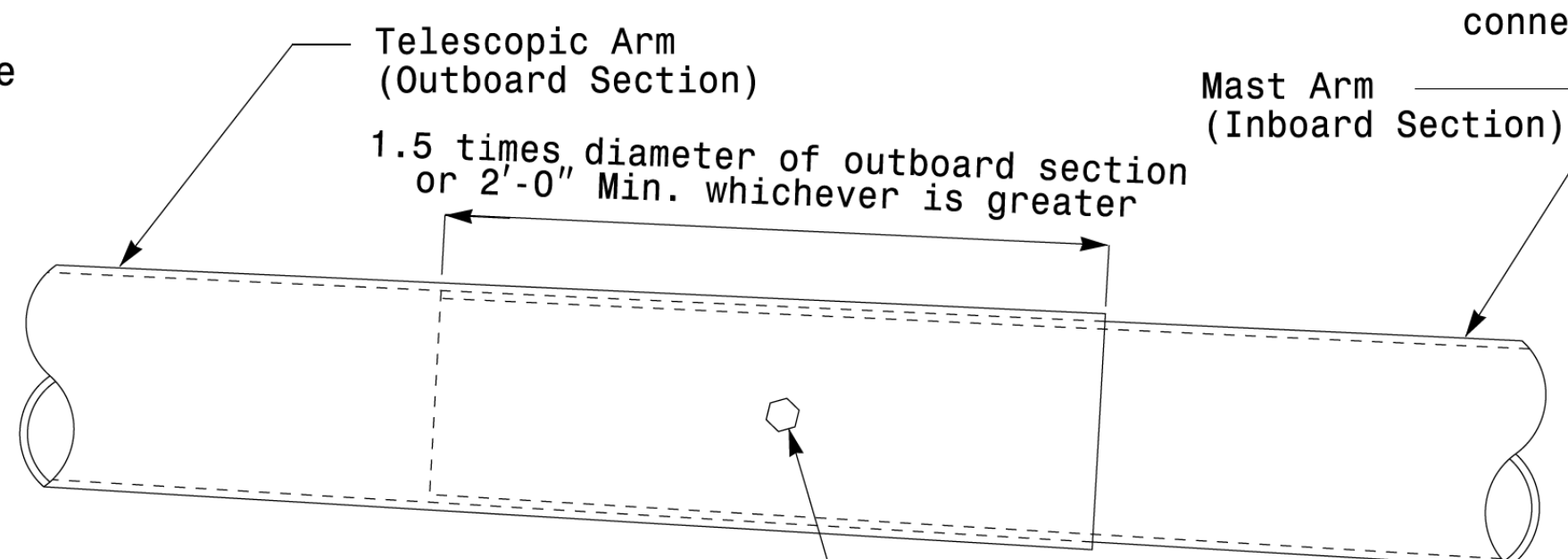
5/8" Dia. Thru Bolt
 (See Slip Fit Joint Detail)

See Slip Fit Joint Detail

Hand Hole with cover

Arm I.D.Tag mounting location (See drawing M2)

Arm I.D.Tag mounting location (See drawing M2)



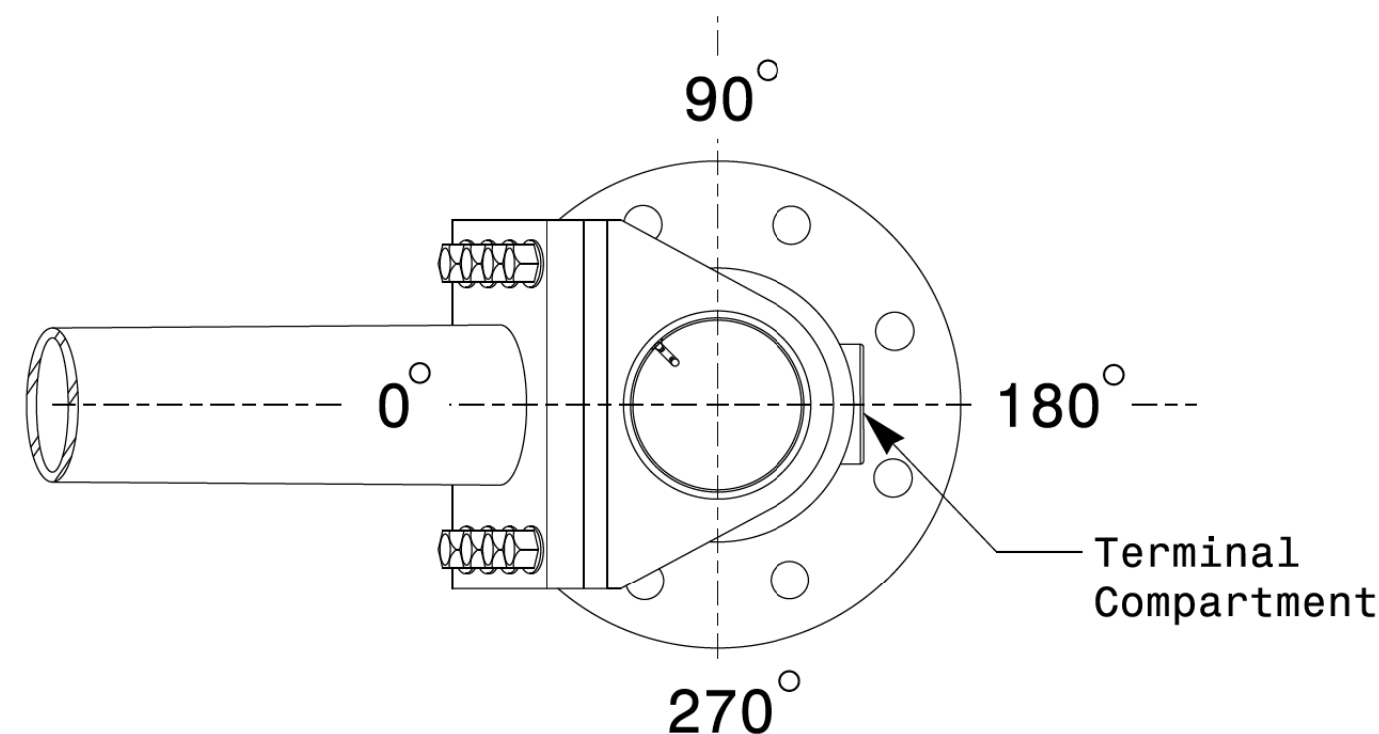
Telescopic Arm (Outboard Section)

Mast Arm (Inboard Section)

1.5 times diameter of outboard section or 2'-0" Min. whichever is greater

3/4" Factory Drilled Hole in Outboard Tube. Field Drill Inboard Tube. 5/8" Galvanized Thru Bolt with (2) Hex. Locknuts Each.

Slip Fit Joint Detail for Mast Arm

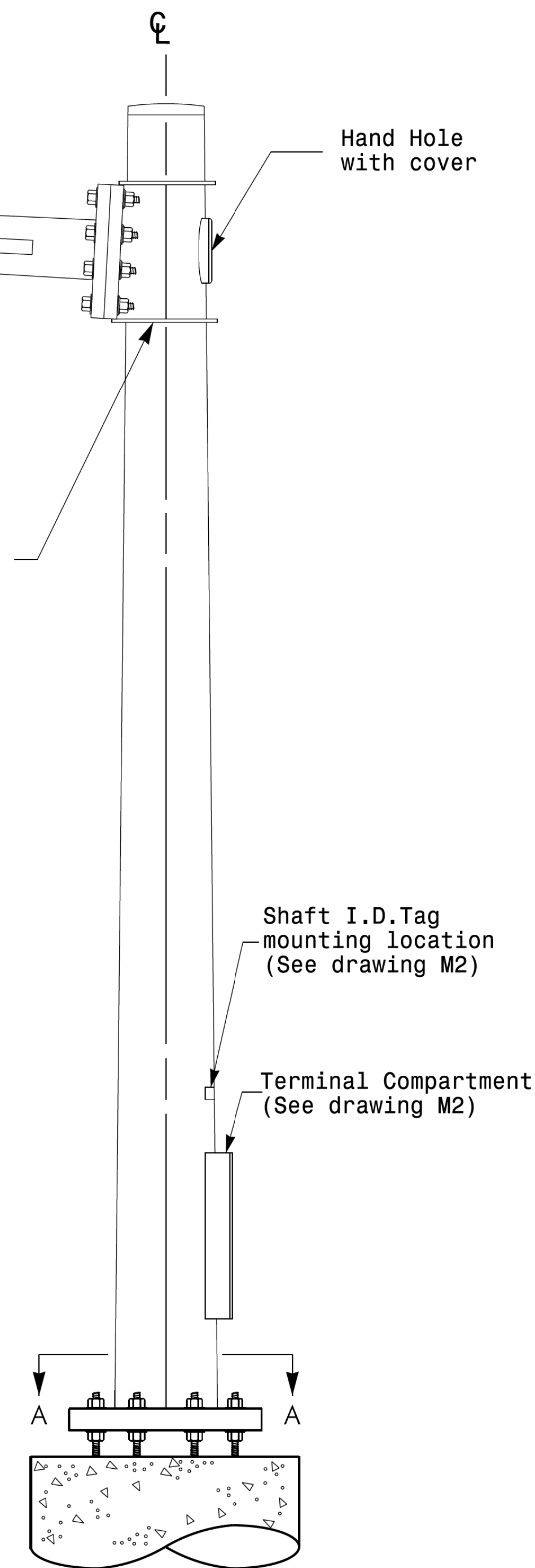


Mast Arm Radial Orientation

See drawing M5 for Mast Arm connection details

Shaft I.D.Tag mounting location (See drawing M2)

Terminal Compartment (See drawing M2)



Mast Arm Pole

Prepared in the Offices of:

750 N. Greenfield Pkwy, Garner, NC 27529

SCALE: 0 NA NONE

Typical Fabrication Details For Mast Arm Poles

PLAN DATE: OCTOBER 2017	DESIGNED BY: K.C. DURIGON
PREPARED BY: N. BITTING	REVIEWED BY: D.C. SARKAR
REVISIONS	INIT. DATE

SEAL

DocuSigned by: Dinesh C. Sarkar

10/11/2017

DATE

Fabrication Details - Mast Arm Poles

11-01-2017 08:33 P:\13560\115 Signal\sig1 Design Section\Eastern Region\MT Sheets\2016\2014 Sig.M4 Std. Fabrication Detail\Mast Arm Poles.dgn