
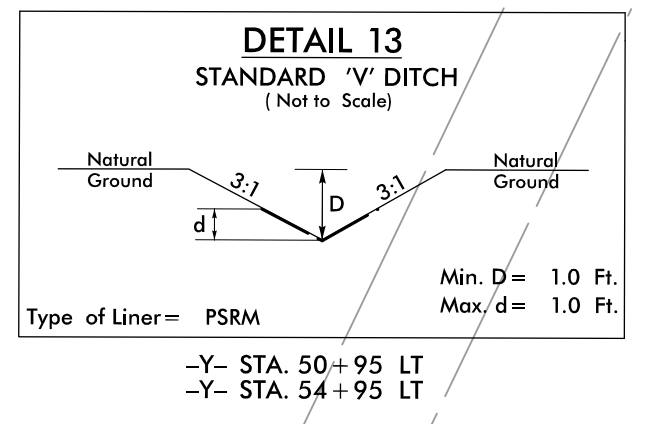
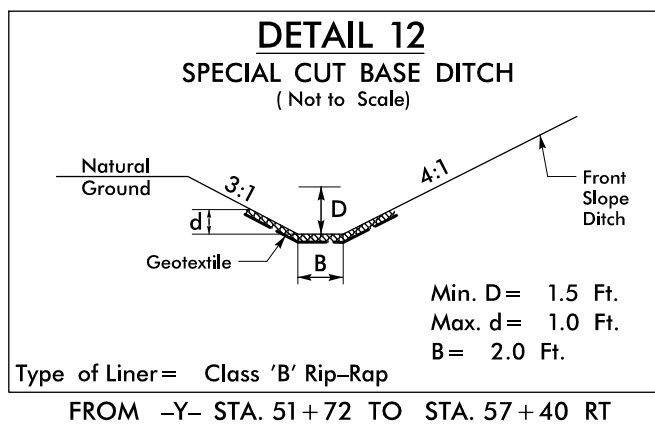
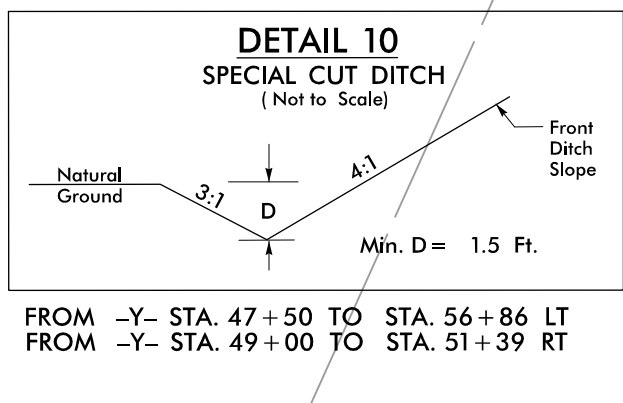
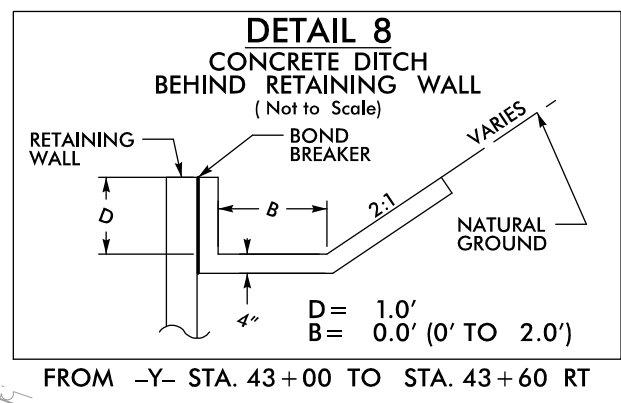
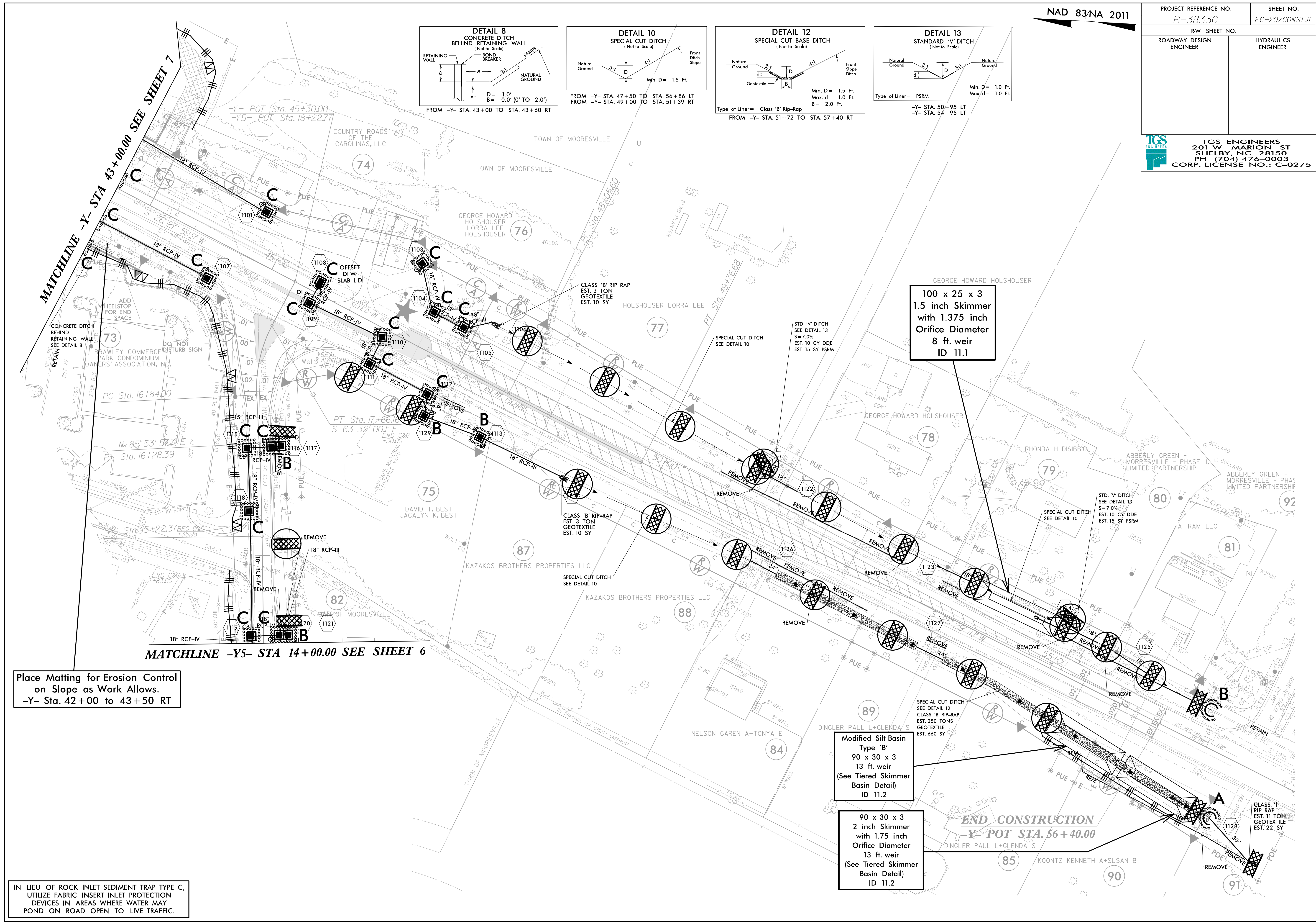


PROJECT REFERENCE NO. R-3833C		SHEET NO. EC-20/CONST.II	
RW SHEET NO.			
ROADWAY DESIGN ENGINEER		HYDRAULICS ENGINEER	
 TGS ENGINEERS 201 W MARION ST SHELBY, NC 28150 PH (704) 476-0003 CORP. LICENSE NO.: C-0275			



Place Matting for Erosion Control on Slope as Work Allows.
-Y- Sta. 42+00 to 43+50 RT

IN LIEU OF ROCK INLET SEDIMENT TRAP TYPE C, UTILIZE FABRIC INSERT INLET PROTECTION DEVICES IN AREAS WHERE WATER MAY POND ON ROAD OPEN TO LIVE TRAFFIC.

100 x 25 x 3
1.5 inch Skimmer
with 1.375 inch
Orifice Diameter
8 ft. weir
ID 11.1

Modified Silt Basin
Type 'B'
90 x 30 x 3
13 ft. weir
(See Tiered Skimmer
Basin Detail)
ID 11.2

90 x 30 x 3
2 inch Skimmer
with 1.75 inch
Orifice Diameter
13 ft. weir
(See Tiered Skimmer
Basin Detail)
ID 11.2

END CONSTRUCTION
-Y- POT STA. 56+40.00