
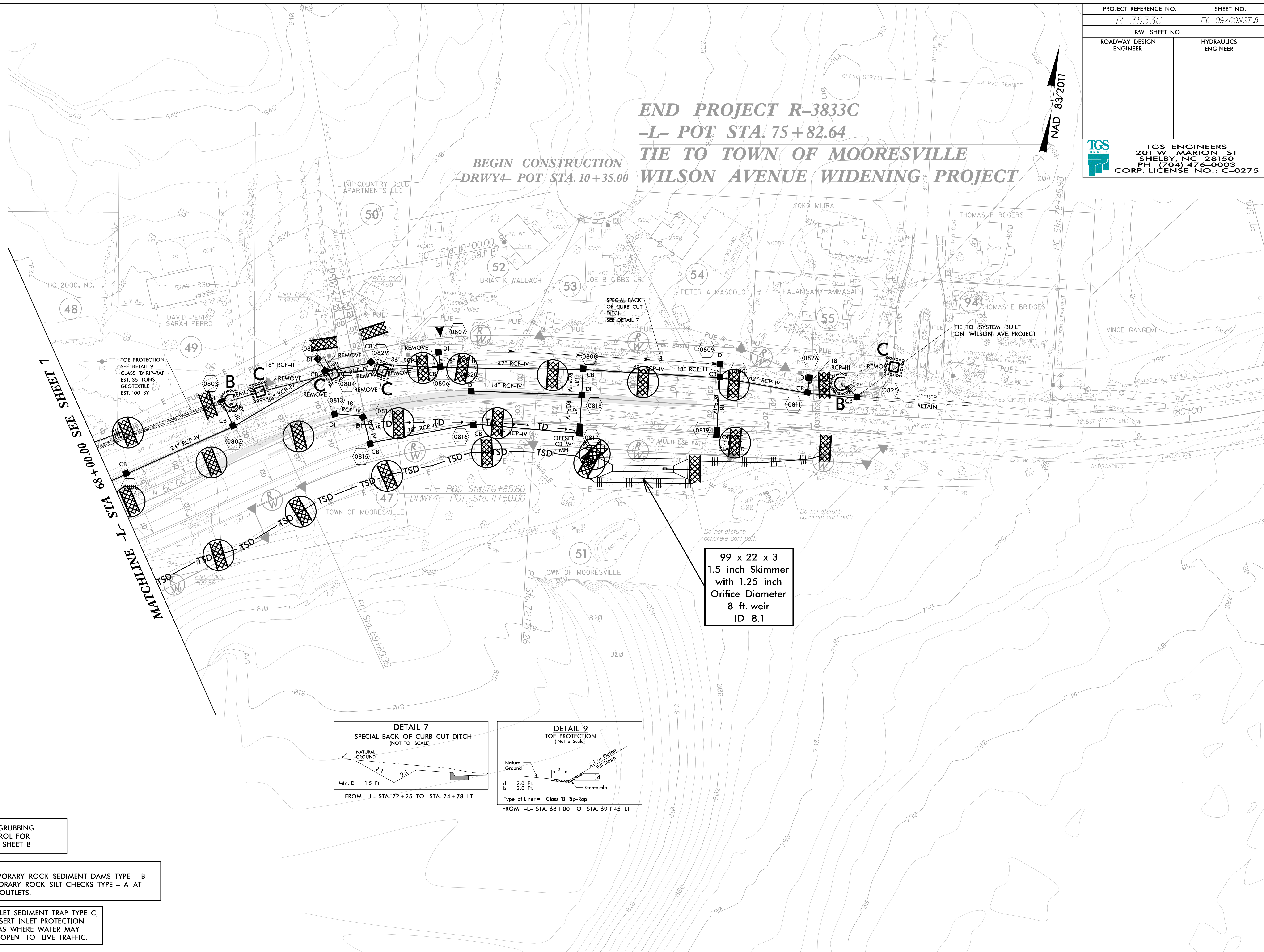


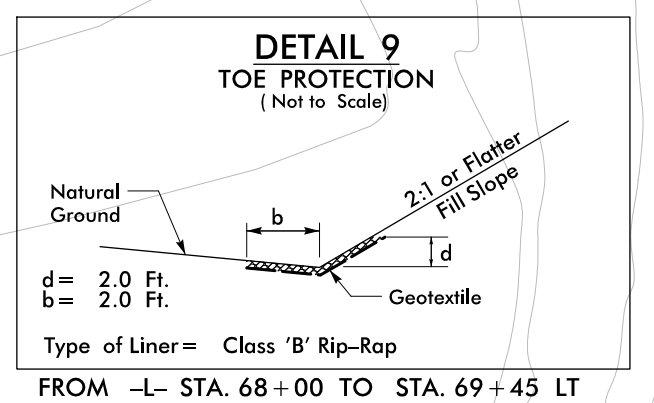
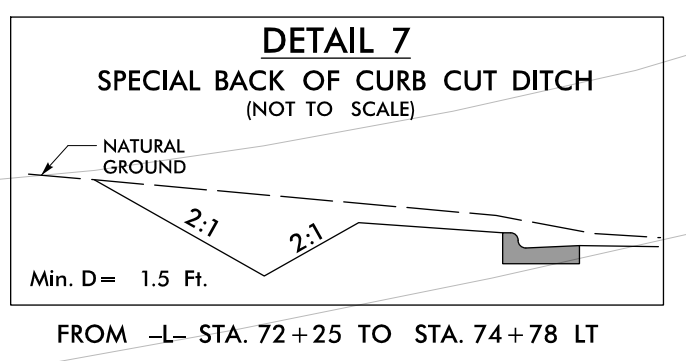
PROJECT REFERENCE NO. <i>R-3833C</i>	SHEET NO. <i>EC-09/CONST.B</i>
RW SHEET NO.	
ROADWAY DESIGN ENGINEER	HYDRAULICS ENGINEER
 <b>TGS ENGINEERS</b> 201 W MARION ST SHELBY, NC 28150 PH (704) 476-0003 CORP. LICENSE NO.: C-0275	

**END PROJECT R-3833C**  
**-L- POT STA. 75 + 82.64**  
**TIE TO TOWN OF MOORESVILLE**  
**WILSON AVENUE WIDENING PROJECT**

**BEGIN CONSTRUCTION**  
**-DRWY4- POT STA. 10 + 35.00**



**MACHINE -L- STA. 68 + 00.00 SEE SHEET 7**



**99 x 22 x 3**  
**1.5 inch Skimmer**  
**with 1.25 inch**  
**Orifice Diameter**  
**8 ft. weir**  
**ID 8.1**

CLEARING AND GRUBBING  
 EROSION CONTROL FOR  
 CONSTRUCTION SHEET 8

**NOTE:**  
 PLACE TEMPORARY ROCK SEDIMENT DAMS TYPE - B  
 AND TEMPORARY ROCK SILT CHECKS TYPE - A AT  
 DRAINAGE OUTLETS.

IN LIEU OF ROCK INLET SEDIMENT TRAP TYPE C,  
 UTILIZE FABRIC INSERT INLET PROTECTION  
 DEVICES IN AREAS WHERE WATER MAY  
 POND ON ROAD OPEN TO LIVE TRAFFIC.