

5/14/2023

LINDA CATHERINE DB I291 PG 1637  
TUCKER MURPHY PB 7 PG 4

JAMES D CABE  
FRANCES B CABE  
DB 1395 PG 2  
PB 7 PG 4

NANCY L EDRESON  
DON VANNORTWICK  
DB 1894 PG 2099  
PB 7 PG 4

URIEL VILLEGAS  
DB 2180 PG 1596  
PB 7 PG 4

ROBERT D KERLIN  
DB 2117 PG 219  
PB 25 PG 193

-Y- POC Sta. 21+09.23  
-Y8- POT Sta. 19+33.14

KENNETH DOUTHIT ET AL.  
DB IOE PG 14  
PB 7 PG 4

SOUTHERN TRUCKING  
HOLDINGS, LLC  
DB 2506 PG 400

PT Sta. 18+72.75  
N 87° 54' 38.7" W

END 8' X 18" CURB  
END C&G  
+28.67

BEG 8' X 18" CURB  
+33.67

END 8' X 18" CURB  
END C&G  
+37.88

BEG 8' X 18" CURB  
+42.88

END 8' X 18" CURB  
END C&G  
+47.88

BEG 8' X 18" CURB  
+52.88

END 8' X 18" CURB  
END C&G  
+57.88

BEG 8' X 18" CURB  
+62.88

END 8' X 18" CURB  
END C&G  
+67.88

BEG 8' X 18" CURB  
+72.88

END 8' X 18" CURB  
END C&G  
+77.88

BEG 8' X 18" CURB  
+82.88

END 8' X 18" CURB  
END C&G  
+87.88

BEG 8' X 18" CURB  
+92.88

END 8' X 18" CURB  
END C&G  
+97.88

BEG 8' X 18" CURB  
+102.88

END 8' X 18" CURB  
END C&G  
+107.88

BEG 8' X 18" CURB  
+112.88

END 8' X 18" CURB  
END C&G  
+117.88

-Y8-  
PI Sta 17+78.28  
Δ = 12° 04' 22.2" (RT)  
D = 6' 21' 58.3"  
L = 189.64'  
T = 95.17'  
R = 900.00'  
SE = N/A  
INC = N/A

-Y-  
PI Sta 19+31.22  
Δ = 20° 21' 13.5" (LT)  
D = 4' 05' 33.2"  
L = 497.34'  
T = 251.32'  
R = 1,400.00'  
SE = .04  
INC = 49'

-Y-  
PI Sta 35+73.50  
Δ = 23° 13' 29.2" (RT)  
D = 3' 34' 51.6"  
L = 648.56'  
T = 328.79'  
R = 1,600.00'  
SE = .04  
INC = 49'

-DRWY5-  
PI Sta 11+22.18  
Δ = 90° 49' 57.1" (LT)  
D = 114' 35' 29.6"  
L = 79.27'  
T = 50.73'  
R = 50.00'  
SE = SEE PLANS  
INC = 10'

TGS ENGINEERS  
706 HILLSBOROUGH ST. SUITE 200  
RALEIGH, NC 27603  
PH (919) 773-8887  
CORP. LICENSE NO.: C-0275

PROJECT REFERENCE NO. R-3833C  
SHEET NO. 10

ROADWAY DESIGN ENGINEER  
HYDRAULICS ENGINEER  
NORTH CAROLINA PROFESSIONAL ENGINEER  
A. Dean Davis  
4/27/2023

FOR -Y- PROFILE SEE SHEET 15  
FOR -DRWY5- PROFILE SEE SHEET 19



NAD 83/NA 2011

DOCUMENT NOT CONSIDERED FINAL  
UNLESS ALL SIGNATURES COMPLETED

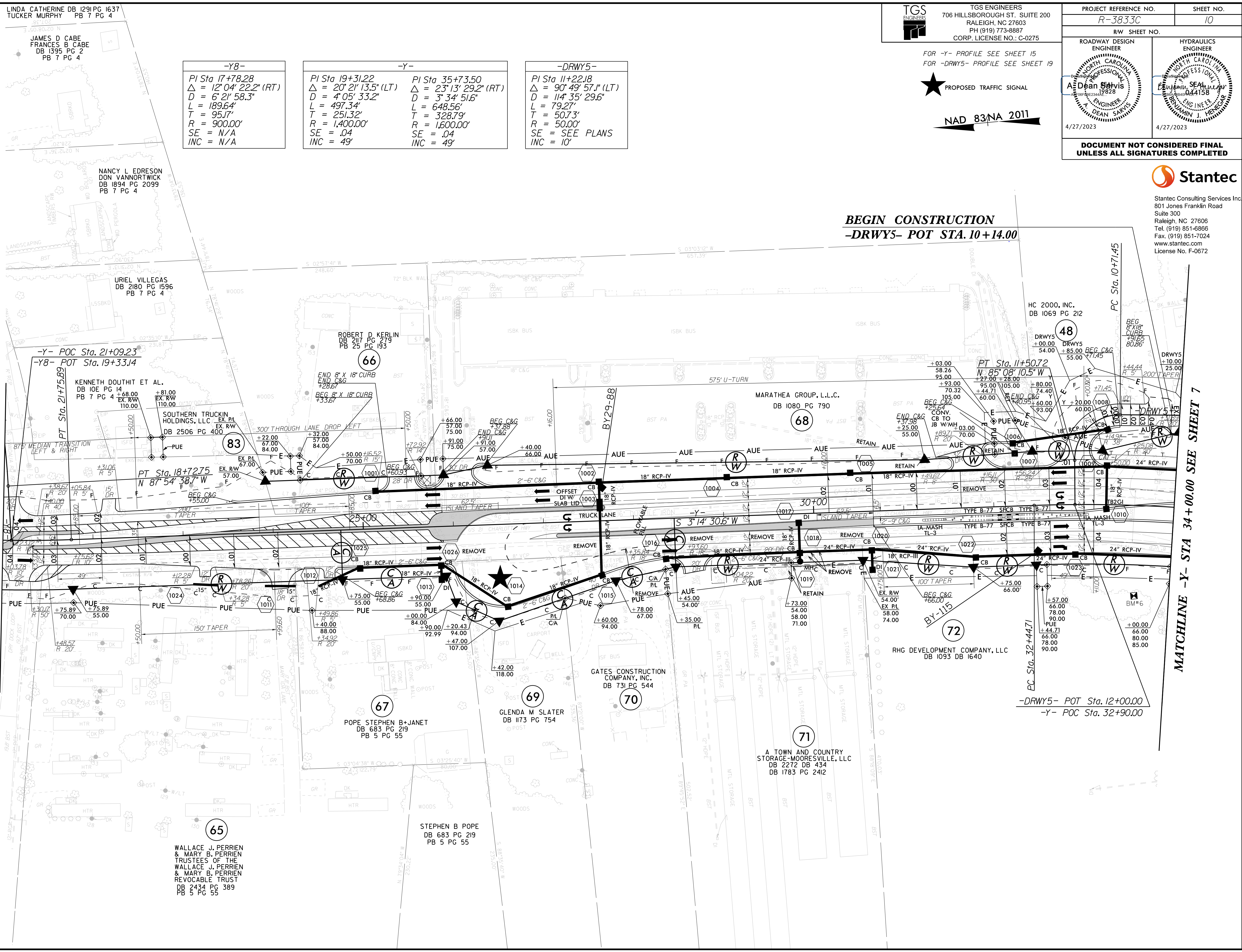


Stantec Consulting Services Inc  
801 Jones Franklin Road  
Suite 300  
Raleigh, NC 27606  
Tel. (919) 851-8866  
Fax. (919) 851-7024  
www.stantec.com  
License No. F-0672

BEGIN CONSTRUCTION  
-DRWY5- POT STA. 10+14.00

MATCHLINE -Y- STA 21+00.00 SEE SHEET 9

MATCHLINE -Y- STA 34+00.00 SEE SHEET 7



-DRWY5- POT Sta. 12+00.00  
-Y- POC Sta. 32+90.00

U:\a230\2023\proj\R3833C\_rdy\_psh10.dgn  
3/30/2023 10:08:00 AM