

5/14/2023  
3/30/2023  
U:\Projects\2023\03\NR3833C\_rdy\_psh09.dgn

TGS ENGINEERS  
706 HILLSBOROUGH ST. SUITE 200  
RALEIGH, NC 27603  
PH (919) 773-8887  
CORP. LICENSE NO.: C-0275

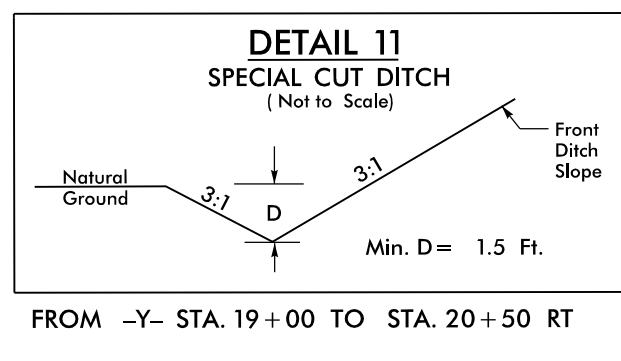
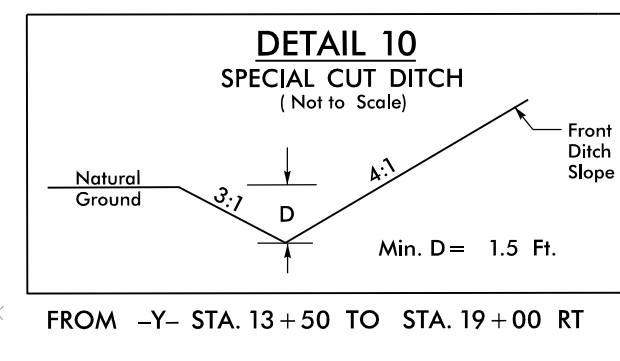
PROJECT REFERENCE NO. <b>R-3833C</b>	SHEET NO. <b>09</b>
RW SHEET NO.	HYDRAULICS ENGINEER
ROADWAY DESIGN ENGINEER	PROFESSIONAL ENGINEER
4/27/2023	4/27/2023

FOR -Y- PROFILE SEE SHEET 15  
**NAD 83/NA 2011**

**DOCUMENT NOT CONSIDERED FINAL UNLESS ALL SIGNATURES COMPLETED**

LINDA CATHERINE TUCKER MURPHY  
DB 1291 PG 1637  
PB 7 PG 4

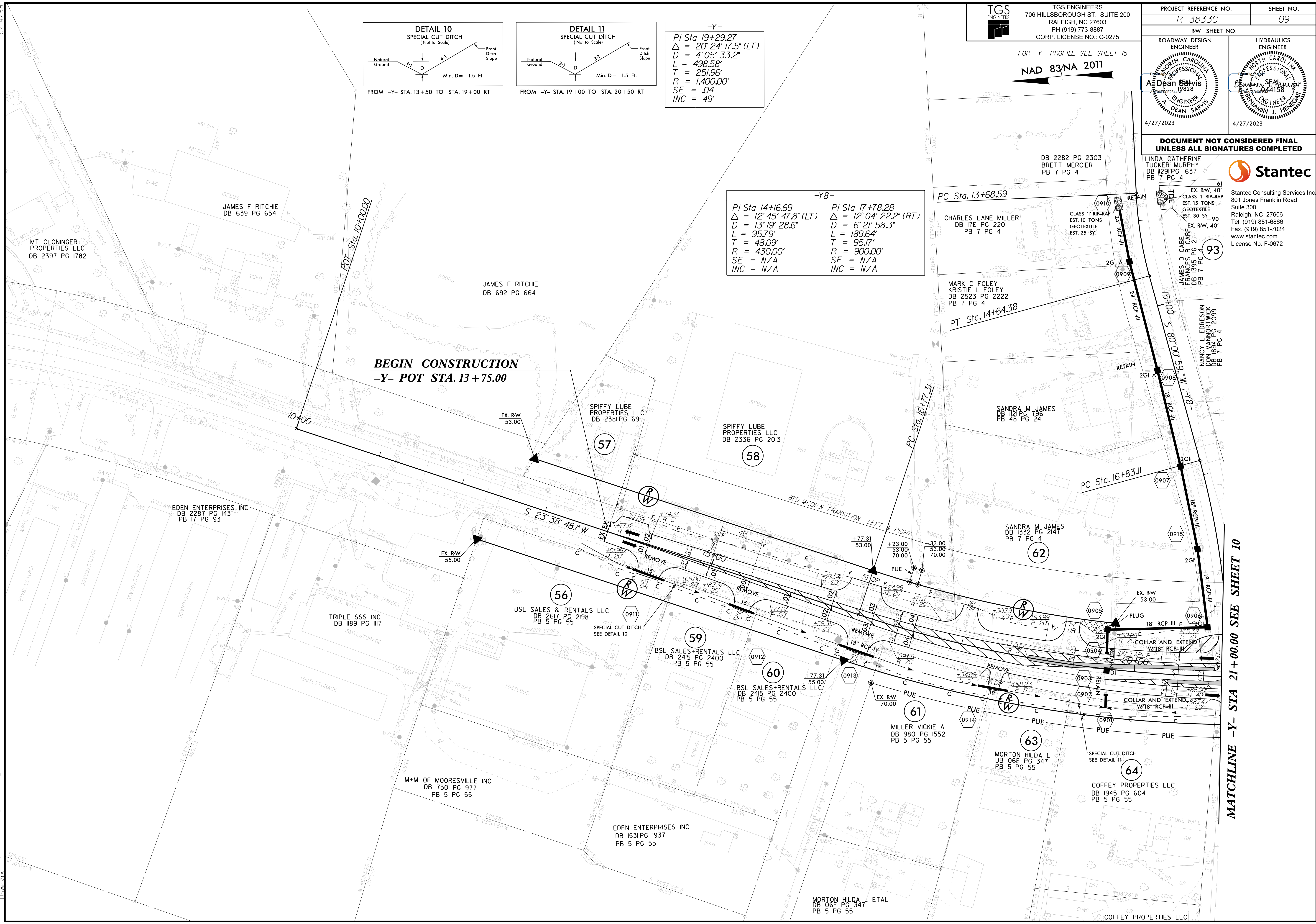
**Stantec**  
Stantec Consulting Services Inc  
801 Jones Franklin Road  
Suite 300  
Raleigh, NC 27606  
Tel. (919) 851-8866  
Fax. (919) 851-7024  
www.stantec.com  
License No. F-0672



-Y-  
PI Sta 19+29.27  
 $\Delta = 20' 24' 17.5" (LT)$   
 $D = 4' 05' 33.2"$   
 $L = 498.58'$   
 $T = 251.96'$   
 $R = 1,400.00'$   
 $SE = .04$   
 $INC = 49'$

-Y8-  
PI Sta 14+16.69  
 $\Delta = 12' 45' 47.8" (LT)$   
 $D = 13' 19' 28.6"$   
 $L = 95.79'$   
 $T = 48.09'$   
 $R = 430.00'$   
 $SE = N/A$   
 $INC = N/A$

PI Sta 17+78.28  
 $\Delta = 12' 04' 22.2" (RT)$   
 $D = 6' 21' 58.3"$   
 $L = 189.64'$   
 $T = 95.17'$   
 $R = 900.00'$   
 $SE = N/A$   
 $INC = N/A$



**BEGIN CONSTRUCTION**  
-Y- POT STA. 13+75.00

**MATCHLINE -Y- STA 21+00.00 SEE SHEET 10**