

5/14/2023

PROJECT REFERENCE NO. R-3833C		SHEET NO. 07	
RW SHEET NO.			
ROADWAY DESIGN ENGINEER 		HYDRAULICS ENGINEER 	
10/16/2023		10/16/2023	
<b>DOCUMENT NOT CONSIDERED FINAL UNLESS ALL SIGNATURES COMPLETED</b>			
		TGS ENGINEERS 706 HILLSBOROUGH ST., SUITE 200 RALEIGH, NC 27603 PH (919) 773-8887 CORP. LICENSE NO.: C-0275	

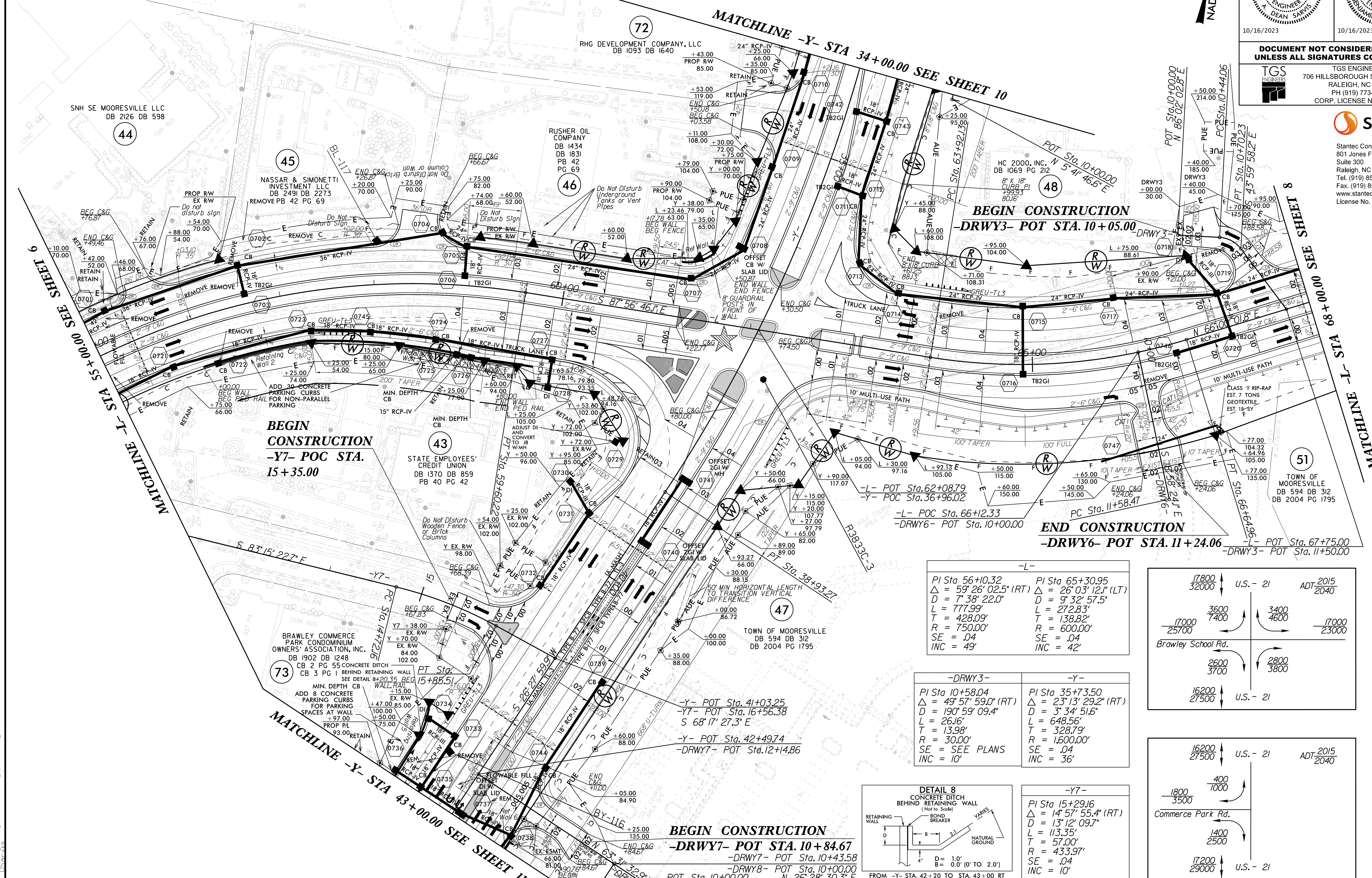
**Stantec**

Stantec Consulting Services Inc.  
801 Jones Franklin Road  
Suite 300  
Raleigh, NC 27606  
Tel. (919) 851-6866  
Fax. (919) 851-7024  
www.stantec.com  
License No. F-0672

FOR -L- PROFILE SEE SHEET 13 AND 14  
FOR -Y- PROFILE SEE SHEET 15 AND 16  
FOR -DRWY3- PROFILE SEE SHEET 19  
FOR -DRWY6- PROFILE SEE SHEET 19  
FOR -DRWY7- PROFILE SEE SHEET 19

UPGRADE EXISTING SIGNAL

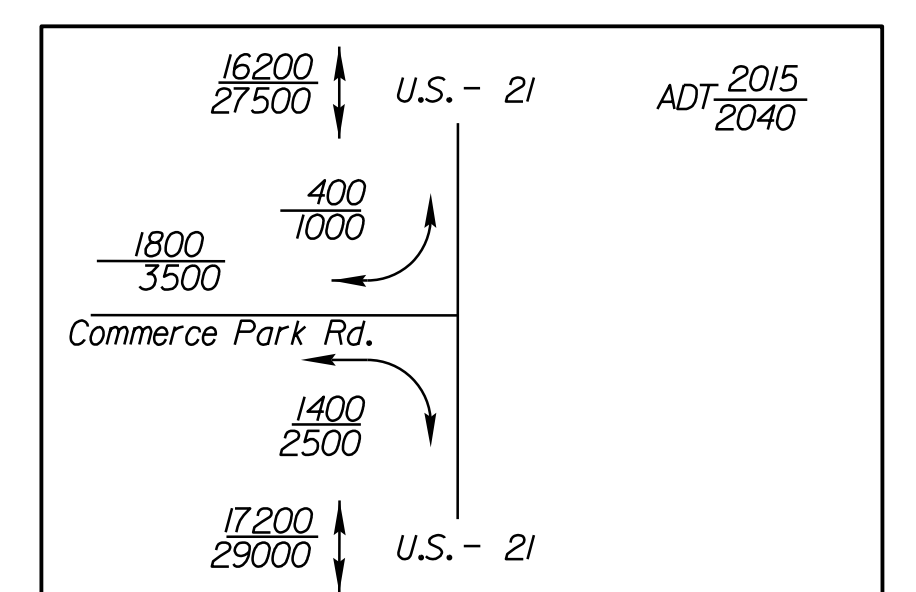
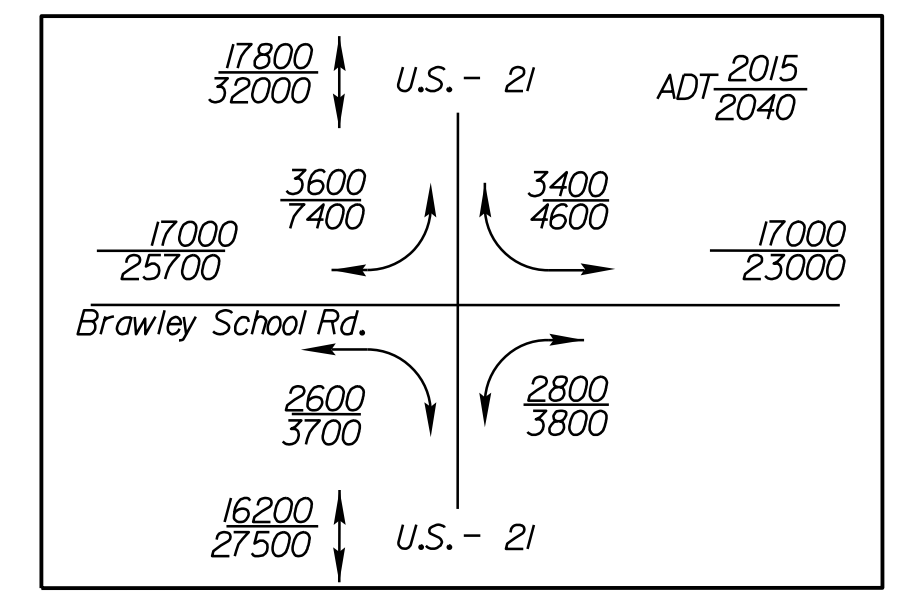
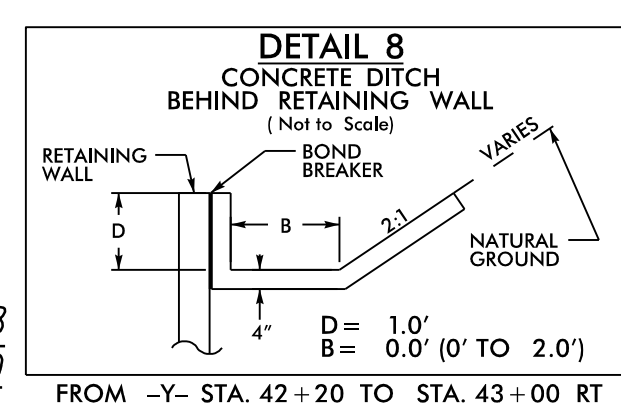
NAD 83/NA 2011



**-L-**

PI Sta 56+10.32 Δ = 59°26'02.5" (RT) D = 7°38'22.0" L = 777.99' T = 428.09' R = 750.00' SE = .04 INC = 49'	PI Sta 65+30.95 Δ = 26°03'12.1" (LT) D = 9°32'57.5" L = 272.83' T = 138.82' R = 600.00' SE = .04 INC = 42'
---	---

<b>-DRWY3-</b>	<b>-Y-</b>
PI Sta 10+58.04 Δ = 49°57'59.0" (RT) D = 190°59'09.4" L = 26.16' T = 13.98' R = 30.00' SE = SEE PLANS INC = 10'	PI Sta 35+73.50 Δ = 23°13'29.2" (RT) D = 3°34'51.6" L = 648.56' T = 328.79' R = 1,600.00' SE = .04 INC = 36'



U:\P\0716\2023\Proj\NR38333C\_rdy\_psh07.dgn