

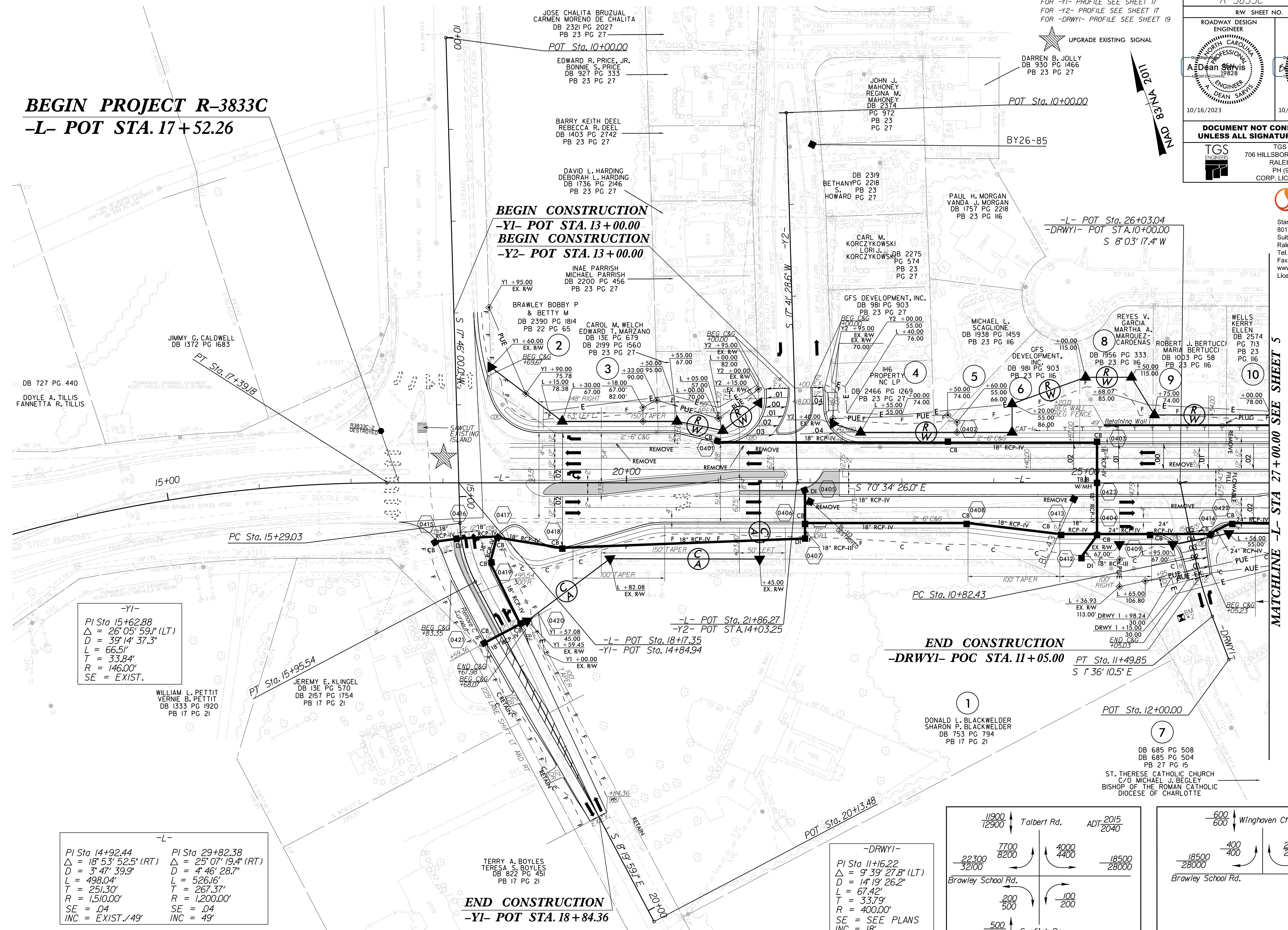
5/14/2023

BEGIN PROJECT R-3833C -L- POT STA. 17+52.26

FOR -L- PROFILE SEE SHEET 12
FOR -Y1- PROFILE SEE SHEET 17
FOR -Y2- PROFILE SEE SHEET 17
FOR -DRWY1- PROFILE SEE SHEET 19

PROJECT REFERENCE NO. R-3833C		SHEET NO. 04	
ROADWAY DESIGN ENGINEER		HYDRAULICS ENGINEER	
<p>DOCUMENT NOT CONSIDERED FINAL UNLESS ALL SIGNATURES COMPLETED</p>			
		<p>TGS ENGINEERS 706 HILLSBOROUGH ST., SUITE 200 RALEIGH, NC 27603 PH (919) 773-8887 CORP. LICENSE NO.: C-0275</p>	

Stantec Consulting Services Inc.
801 Jones Franklin Road
Suite 300
Raleigh, NC 27606
Tel. (919) 851-6866
Fax. (919) 851-7024
www.stantec.com
License No. F-0672



-Y1-
 PI Sta 15+62.88
 $\Delta = 26^{\circ}05'59''$ (LT)
 $D = 39'14'37.3''$
 $L = 66.51'$
 $T = 33.84'$
 $R = 146.00'$
 $SE = EXIST.$

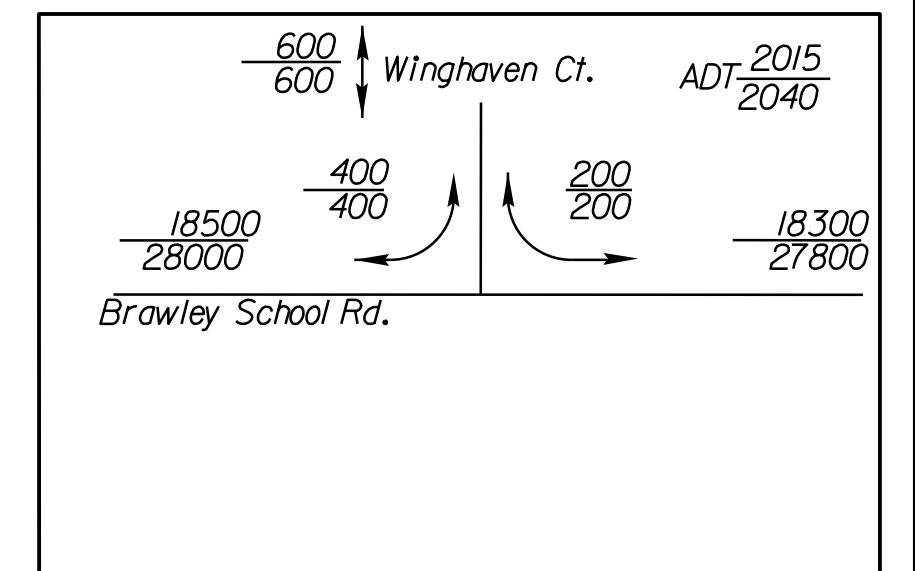
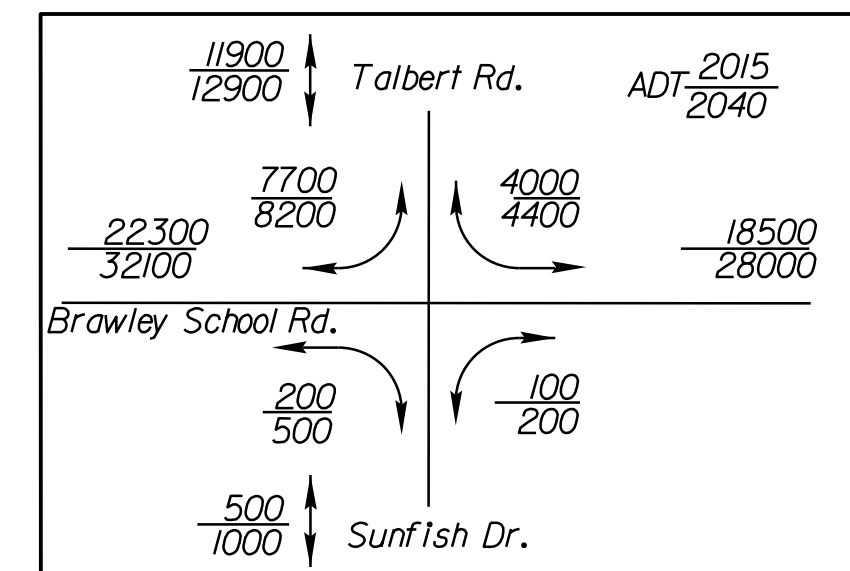
WILLIAM L. PETTIT
 VERNIE B. PETTIT
 DB 1333 PG 1920
 PB 17 PG 21

-L-

PI Sta 14+92.44	PI Sta 29+82.38
$\Delta = 18^{\circ}53'52.5''$ (RT)	$\Delta = 25^{\circ}07'19.4''$ (RT)
$D = 3'47'39.9''$	$D = 4'46'28.7''$
$L = 498.04'$	$L = 526.16'$
$T = 251.30'$	$T = 267.37'$
$R = 1,510.00'$	$R = 1,200.00'$
$SE = .04$	$SE = .04$
$INC = EXIST./49'$	$INC = 49'$

END CONSTRUCTION
-Y1- POT STA. 18+84.36

-DRWY1-
 PI Sta 11+16.22
 $\Delta = 9^{\circ}39'27.8''$ (LT)
 $D = 14'19'26.2''$
 $L = 67.42'$
 $T = 33.79'$
 $R = 400.00'$
 $SE = SEE PLANS$
 $INC = 18'$



U:\P\0\16\2023\Proj\NR3833C_rdy_psh04.dgn