

8/17/99



PROJECT REFERENCE NO. R-3833C	SHEET NO. 2B-2
ROADWAY DESIGN ENGINEER	
4/27/2023	

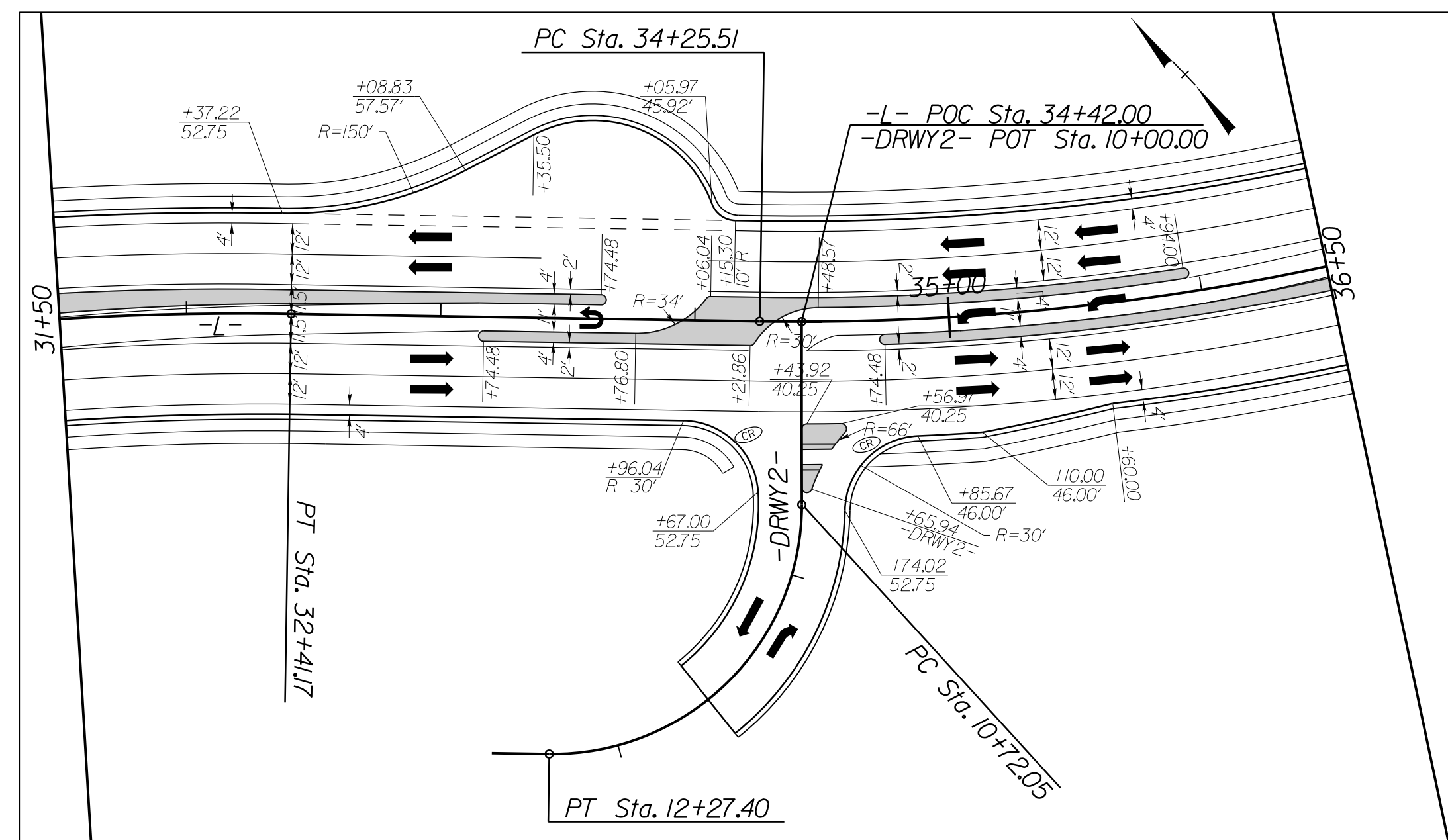
**DOCUMENT NOT CONSIDERED FINAL
UNLESS ALL SIGNATURES COMPLETED**

TGS ENGINEERS
706 HILLSBOROUGH ST. SUITE 200
RALEIGH, NC 27603
PH (919) 773-8887
CORP. LICENSE NO.: C-0275

Stantec

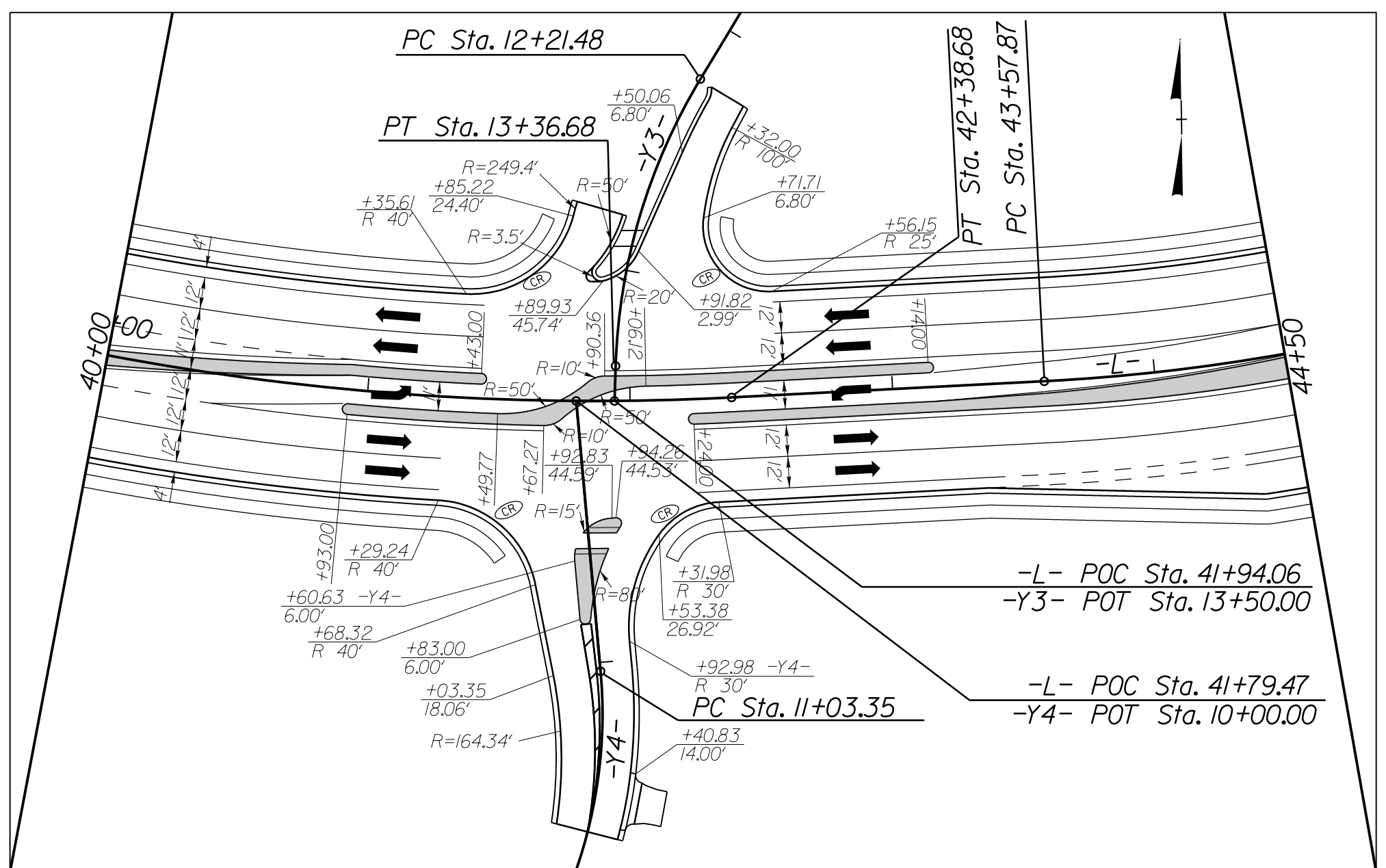
Stantec Consulting Services Inc.
801 Jones Franklin Road
Suite 300
Raleigh, NC 27606
Tel. (919) 851-8868
Fax. (919) 851-7024
www.stantec.com
License No. F-0672

INTERSECTION DETAIL @
-L- (SR 1100-BRAWLEY SCHOOL RD.) &
-DRWY2-



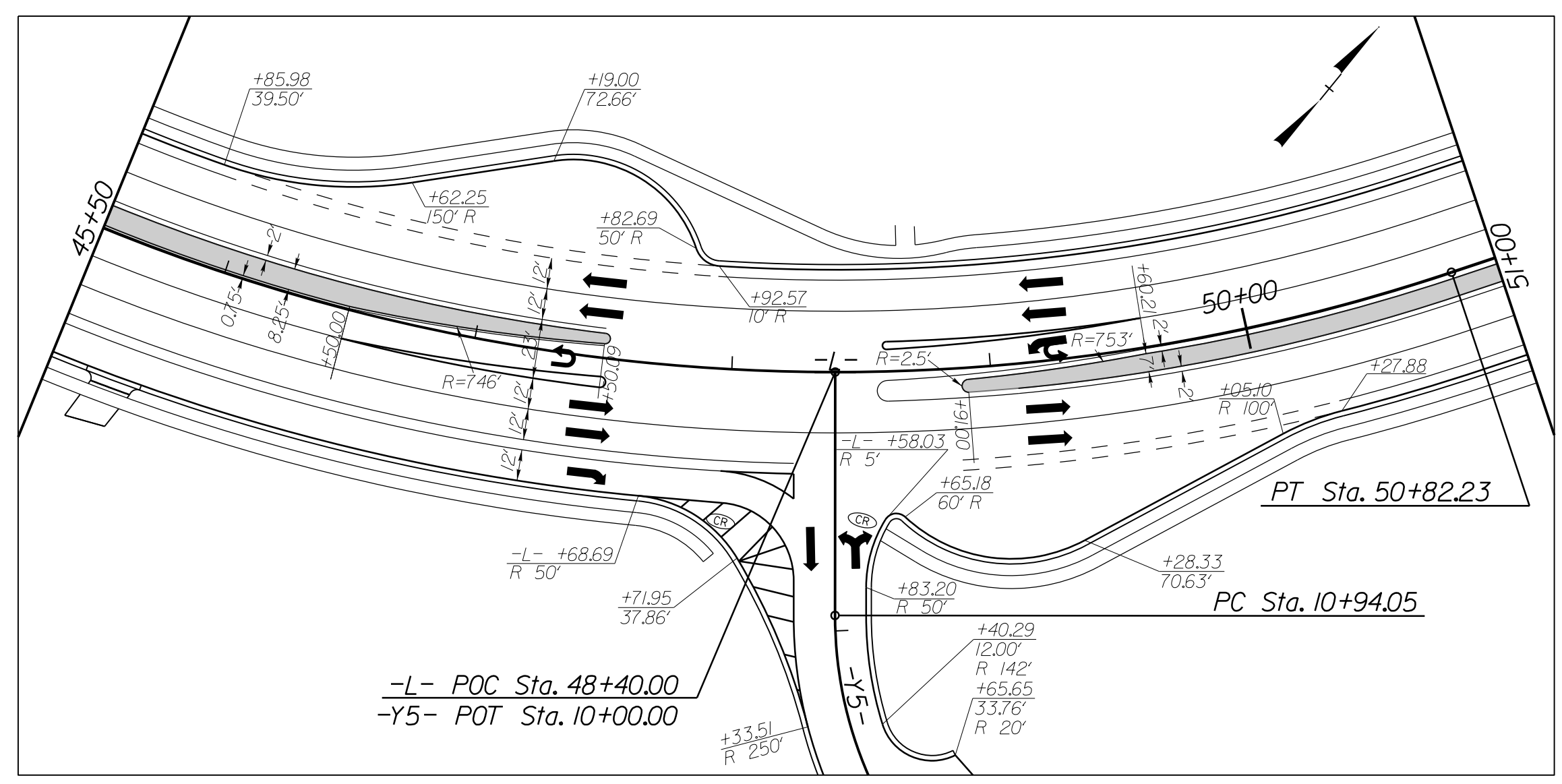
-L- STA. 31+50 TO STA. 36+50
DRIVEWAY /U-TURN DETAIL SHOWN FROM PLAN SHEET 5

INTERSECTION DETAIL @
-L- (SR 1100-BRAWLEY SCHOOL RD.),
-Y3- (CITATION DR.) &
-Y4- (SECRETARIAT DR.)



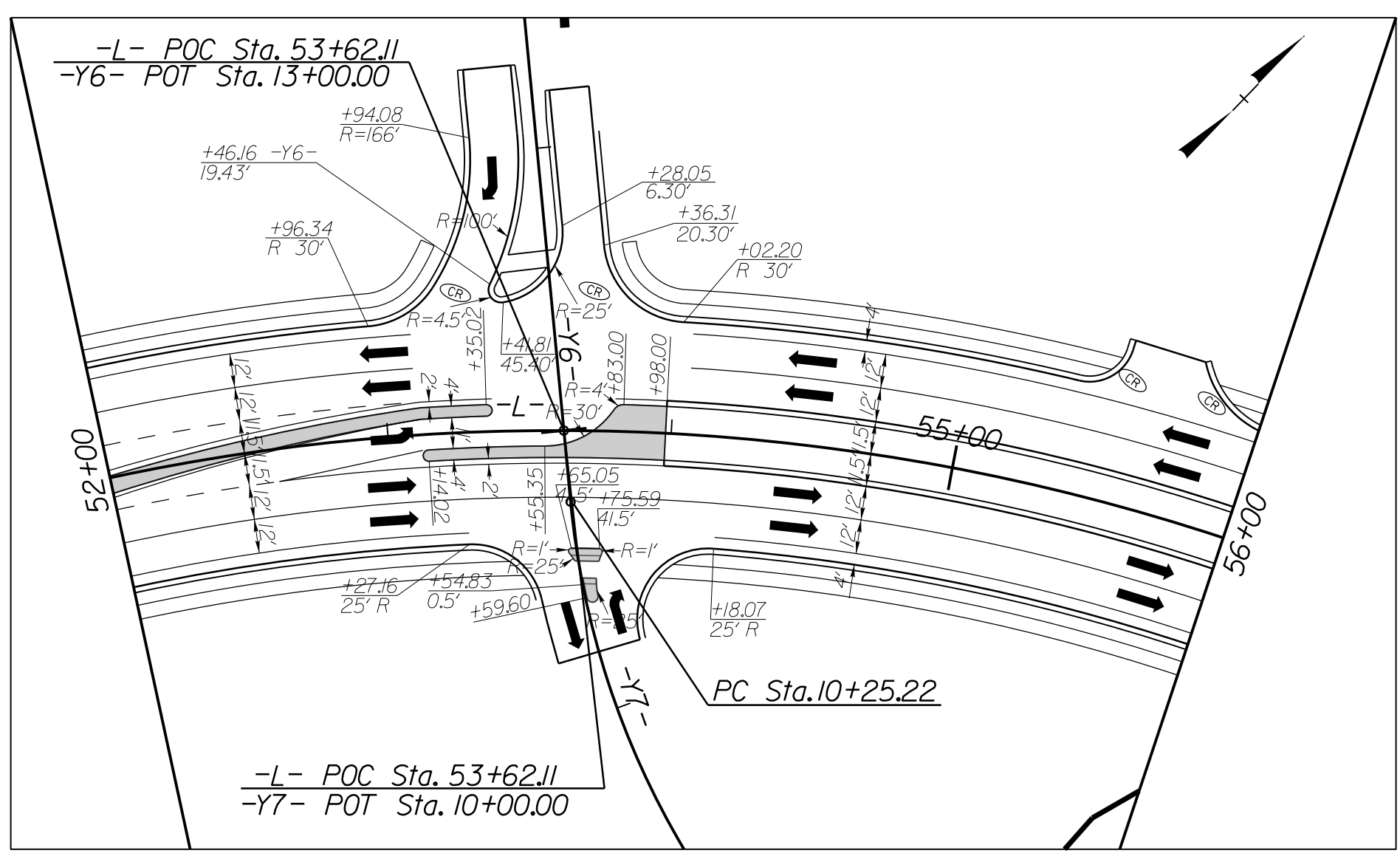
-L- STA. 40+00 TO STA. 44+50
INTERSECTION DETAIL SHOWN FROM PLAN SHEETS 5 & 6

INTERSECTION DETAIL @
-L- (SR 1100-BRAWLEY SCHOOL RD.) &
-Y5- (SR 2993-BALMY LN)



-L- STA. 45+50 TO STA. 51+00
U-TURN /INTERSECTION DETAIL SHOWN FROM PLAN SHEET 6

INTERSECTION DETAIL @
-L- (SR 1100-BRAWLEY SCHOOL RD.),
-Y6- (ROUND KEEP LN), &
-Y7- (COMMERCE PARK RD.)



-L- STA. 52+00 TO STA. 56+00
INTERSECTION DETAIL SHOWN FROM PLAN SHEETS 6 & 7

MONOLITHIC ISLANDS

ALL MONOLITHIC ISLAND RADII
ARE 2' UNLESS OTHERWISE LABELED

3/30/2023
I:\Roadway\Proj\R3833C_rndj_2B-2.dgn
D. Sarvis