

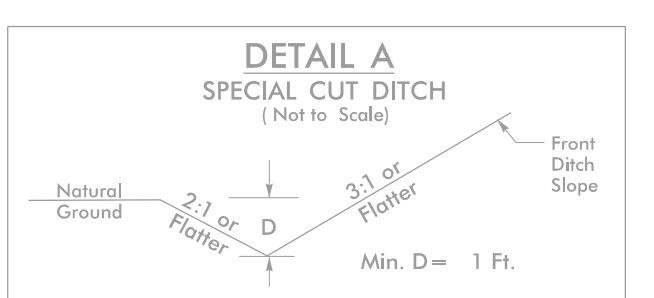
8/17/99

PROJECT REFERENCE NO. U-6003		SHEET NO. EC-04/CONST.04
RW SHEET NO.		
ROADWAY DESIGN ENGINEER	HYDRAULICS ENGINEER	

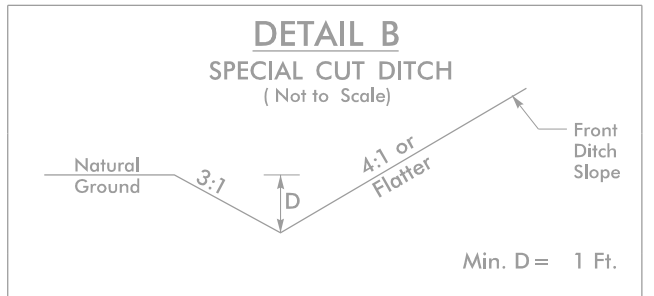
**CLEARING AND GRUBBING
EROSION CONTROL FOR
CONSTRUCTION SHEET 4**

NOTE:
PLACE TEMPORARY ROCK SEDIMENT DAMS TYPE - B
AND TEMPORARY ROCK SILT CHECKS TYPE - A AT
DRAINAGE OUTLETS.

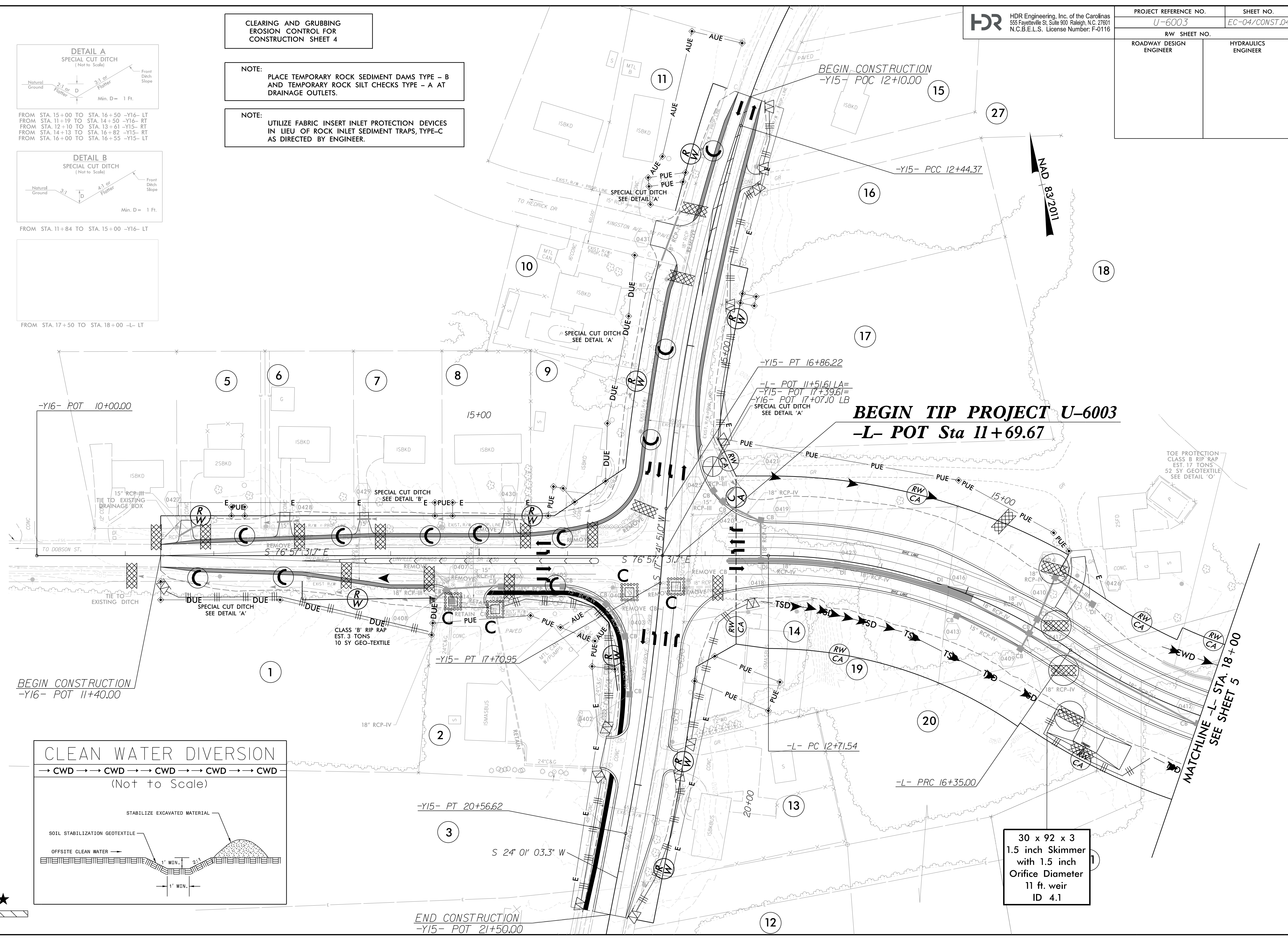
NOTE:
UTILIZE FABRIC INSERT INLET PROTECTION DEVICES
IN LIEU OF ROCK INLET SEDIMENT TRAPS, TYPE-C
AS DIRECTED BY ENGINEER.



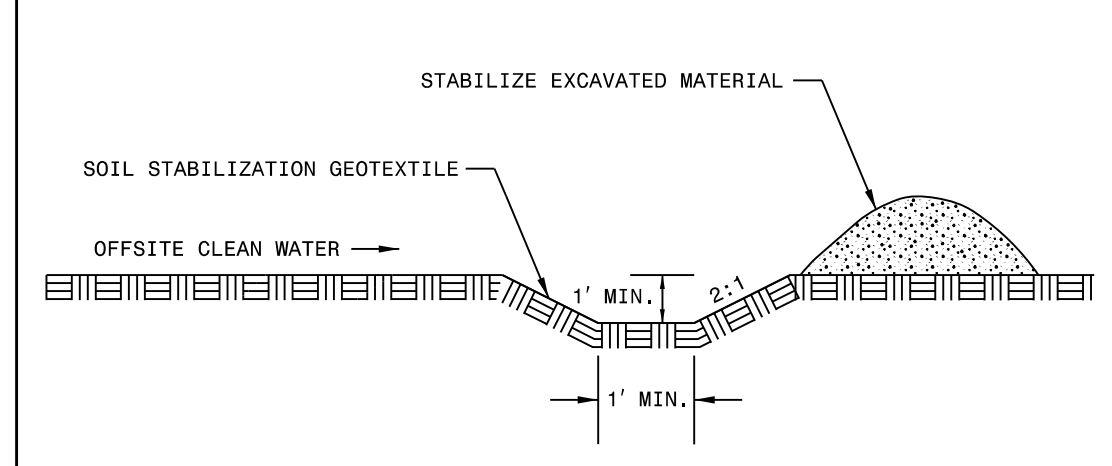
FROM STA. 15+00 TO STA. 16+50 -Y16- LT
FROM STA. 11+19 TO STA. 14+50 -Y16- RT
FROM STA. 12+10 TO STA. 13+61 -Y15- RT
FROM STA. 14+13 TO STA. 16+82 -Y15- RT
FROM STA. 16+00 TO STA. 16+55 -Y15- LT



FROM STA. 11+84 TO STA. 15+00 -Y16- LT



CLEAN WATER DIVERSION
(Not to Scale)



8/9/2023
U-6003-EC-PSH-LCG.dgn
11:50:47 PM