

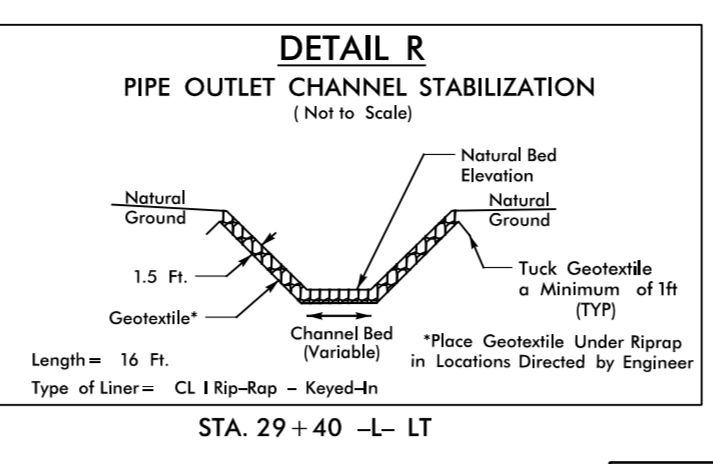
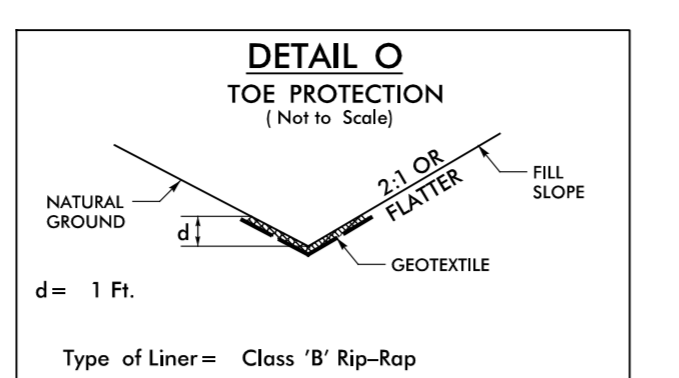
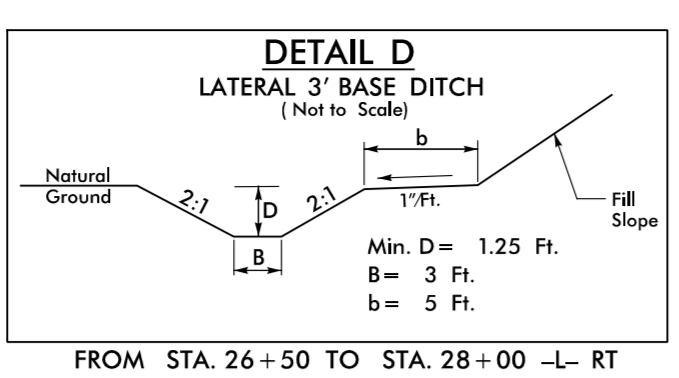
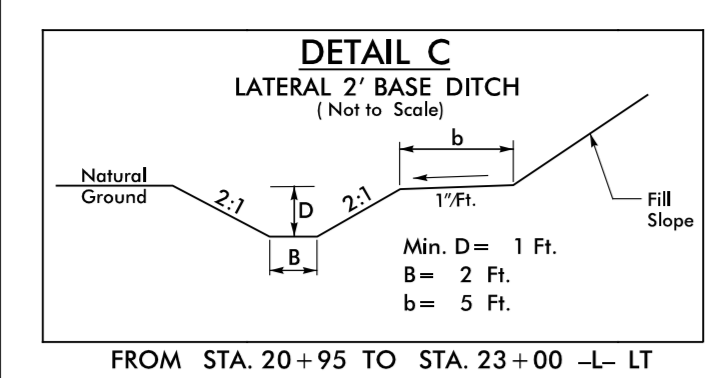
8/17/19

ROADWAY DESIGN ENGINEER
HYDRAULICS ENGINEER

SEAL 041473
ALEXANDER D. JAMES R. RICE

9/12/2023 9/12/2023

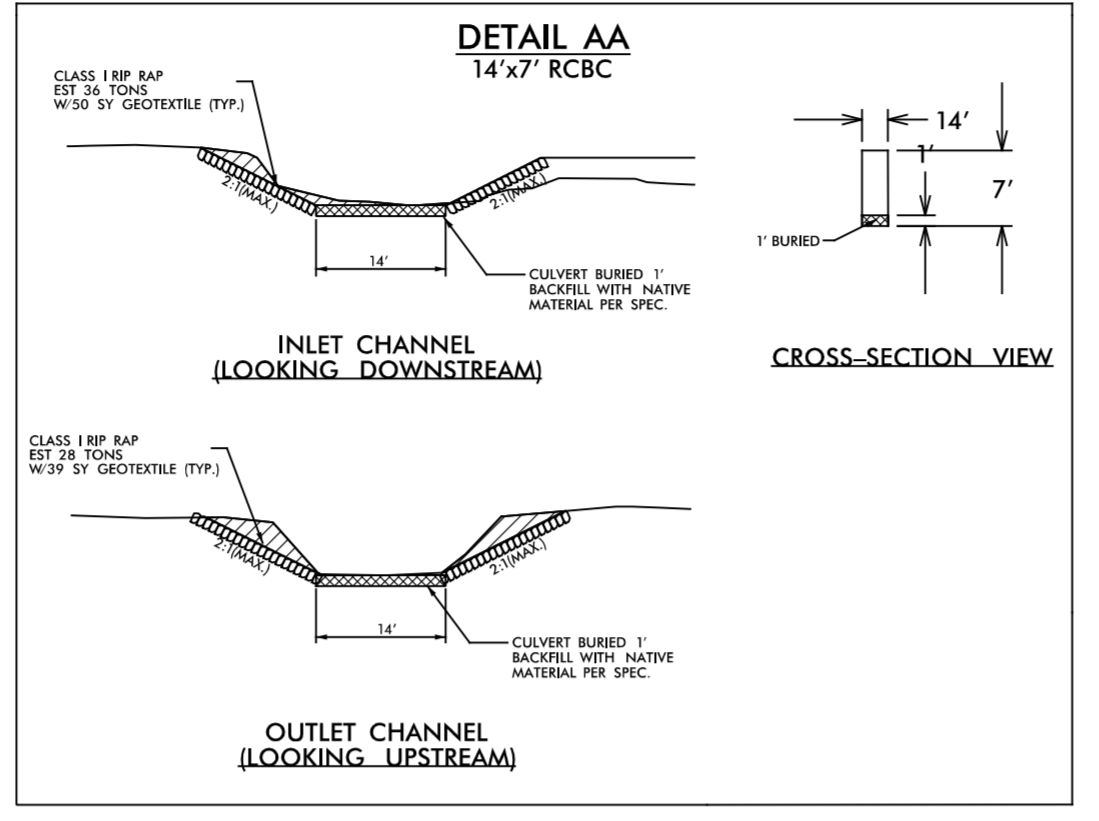
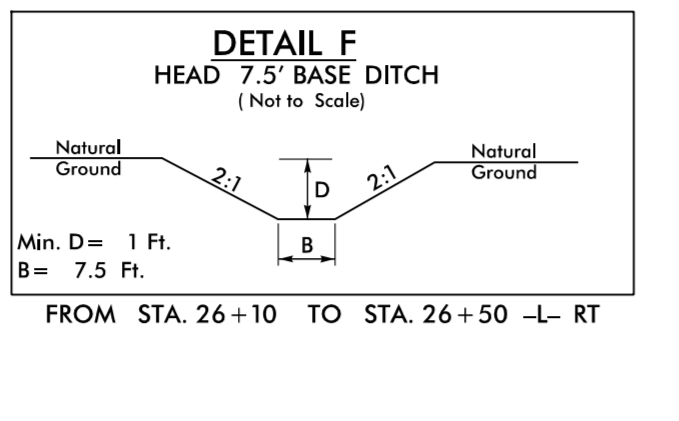
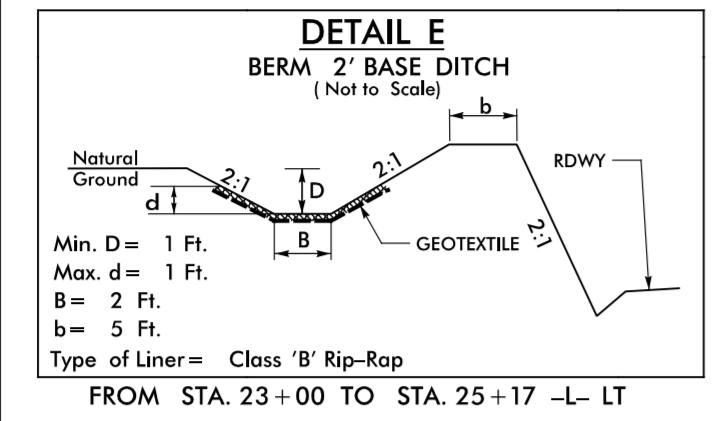
DOCUMENT NOT CONSIDERED FINAL
UNLESS ALL SIGNATURES COMPLETED



-L-

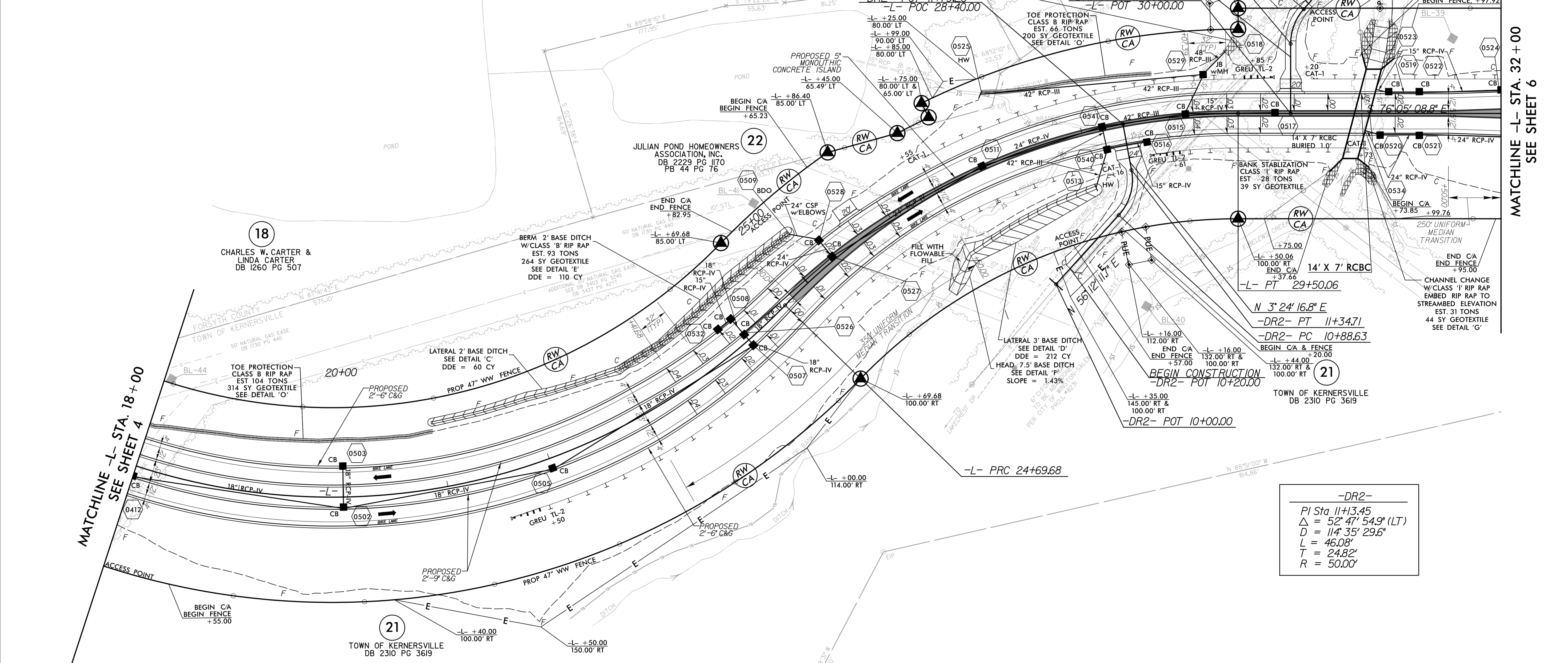
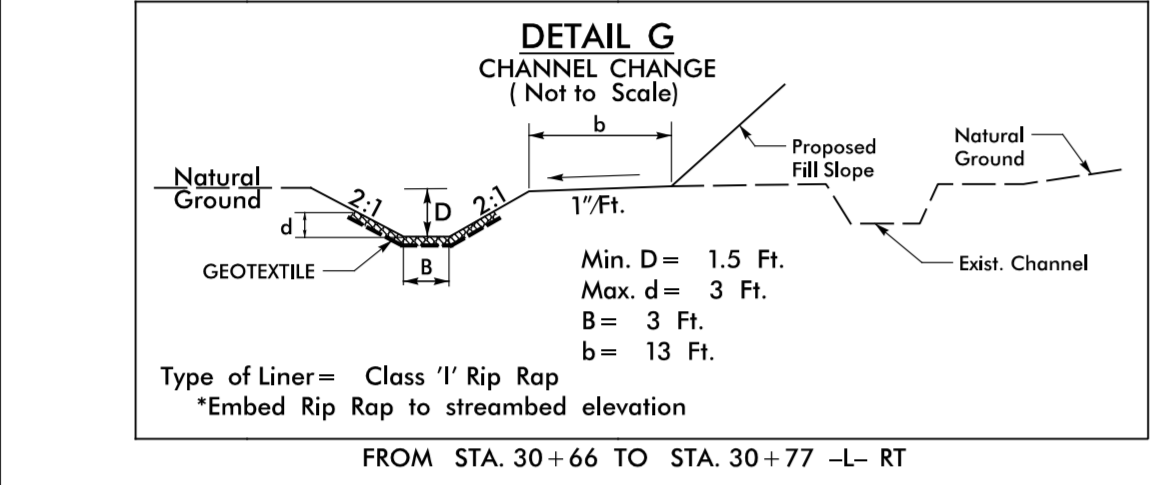
PI Sta 21+35.84
 $\Delta = 79^\circ 42' 24.0''$ (LT)
D = 9' 32' 57.5"
L = 834.69'
T = 500.85'
R = 600.00'
SE = 0.04
V = 40 mph

PI Sta 27+23.58
 $\Delta = 45^\circ 52' 20.5''$ (RT)
D = 9' 32' 57.5"
L = 480.37'
T = 253.90'
R = 600.00'
SE = 0.04
V = 40 mph



-DRI-

PI Sta 10+85.79
 $\Delta = 41^\circ 12' 33.1''$ (LT)
D = 114' 35' 29.6"
L = 35.96'
T = 18.80'
R = 50.00'



-DR2-

PI Sta 11+13.45
 $\Delta = 52^\circ 47' 54.9''$ (LT)
D = 114' 35' 29.6"
L = 46.08'
T = 24.82'
R = 50.00'

FOR -L- PROFILE, SEE SHEET 9
FOR -DRI- PROFILE, SEE SHEET 11
FOR -DR2- PROFILE, SEE SHEET 11

9/5/2023 10:00:03_r-dj_l-PSH05.dgn