

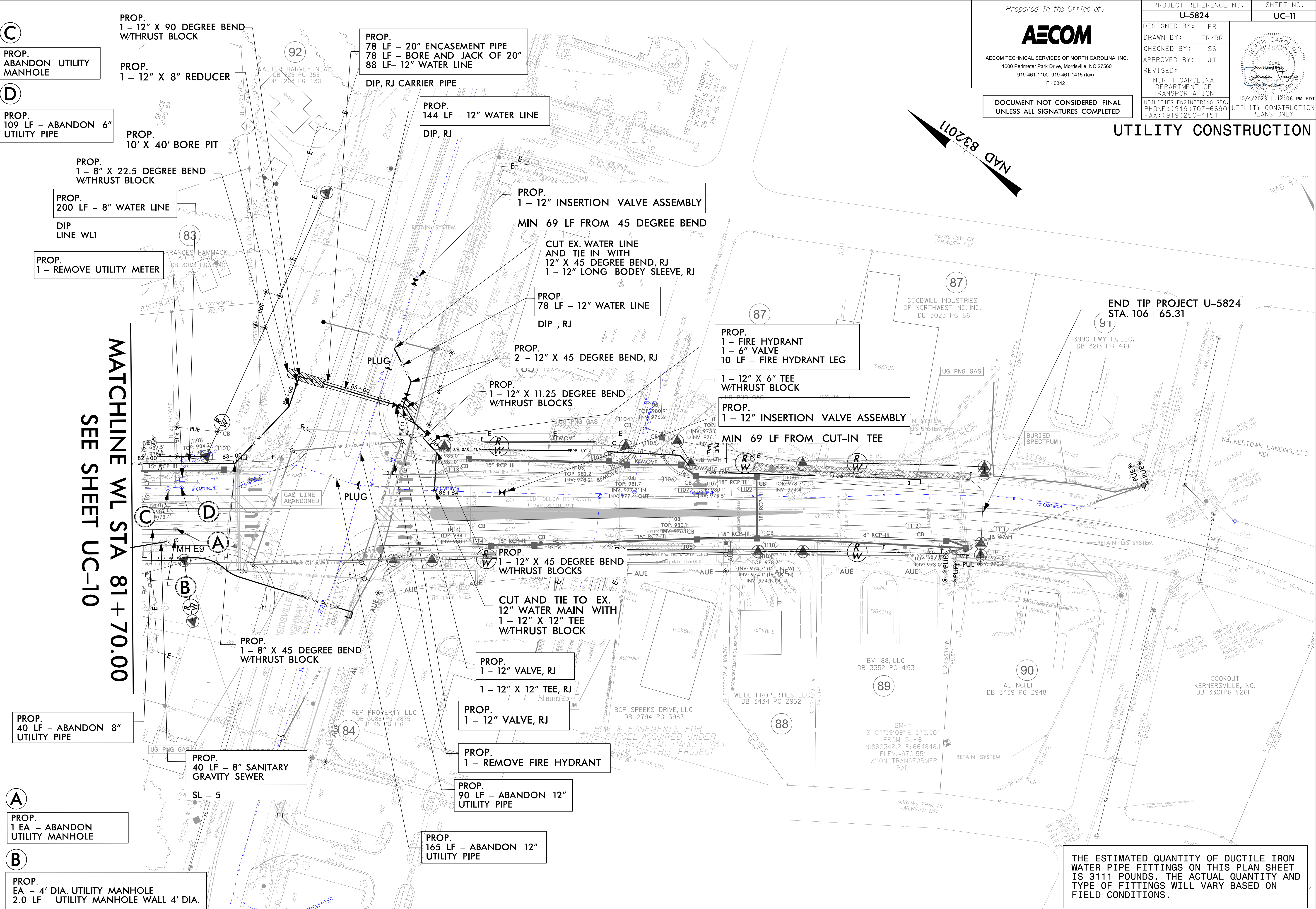
Prepared in the Office of:



AECOM TECHNICAL SERVICES OF NORTH CAROLINA, INC.  
1600 Perimeter Park Drive, Morrisville, NC 27560  
919-461-1100 919-461-1415 (fax)  
F - 0342

PROJECT REFERENCE NO.	U-5824	SHEET NO.	UC-11
DESIGNED BY:	FR		
DRAWN BY:	FR/RR		
CHECKED BY:	SS		
APPROVED BY:	JT		
REVISED:		NORTH CAROLINA DEPARTMENT OF TRANSPORTATION UTILITIES ENGINEERING SECTION PHONE: (919) 707-6690 FAX: (919) 250-4151	
DOCUMENT NOT CONSIDERED FINAL UNLESS ALL SIGNATURES COMPLETED		10/4/2023 11:12:06 PM EDT UTILITY CONSTRUCTION PLANS ONLY	

# UTILITY CONSTRUCTION



**C**  
PROP. ABANDON UTILITY MANHOLE

**D**  
PROP. 109 LF - ABANDON 6" UTILITY PIPE

PROP. 200 LF - 8" WATER LINE  
DIP LINE WL1

PROP. 1 - REMOVE UTILITY METER

MATCHLINE WL STA 81+70.00  
SEE SHEET UC-10

PROP. 40 LF - ABANDON 8" UTILITY PIPE

**A**  
PROP. 1 EA - ABANDON UTILITY MANHOLE

**B**  
PROP. EA - 4' DIA. UTILITY MANHOLE  
2.0 LF - UTILITY MANHOLE WALL 4' DIA.

PROP. 1 - 12" X 90 DEGREE BEND W/THRUST BLOCK

PROP. 1 - 12" X 8" REDUCER

PROP. 10' X 40' BORE PIT

PROP. 1 - 8" X 22.5 DEGREE BEND W/THRUST BLOCK

PROP. 78 LF - 20" ENCASEMENT PIPE  
78 LF - BORE AND JACK OF 20"  
88 LF - 12" WATER LINE

DIP, RJ CARRIER PIPE  
DIP, RJ

PROP. 144 LF - 12" WATER LINE

PROP. 1 - 12" INSERTION VALVE ASSEMBLY  
MIN 69 LF FROM 45 DEGREE BEND

CUT EX. WATER LINE AND TIE IN WITH 12" X 45 DEGREE BEND, RJ  
1 - 12" LONG BODEY SLEEVE, RJ

PROP. 78 LF - 12" WATER LINE  
DIP, RJ

PROP. 2 - 12" X 45 DEGREE BEND, RJ

PROP. 1 - 12" X 11.25 DEGREE BEND W/THRUST BLOCKS

PROP. 1 - FIRE HYDRANT  
1 - 6" VALVE  
10 LF - FIRE HYDRANT LEG

1 - 12" X 6" TEE W/THRUST BLOCK

PROP. 1 - 12" INSERTION VALVE ASSEMBLY  
MIN 69 LF FROM CUT-IN TEE

PROP. 1 - 12" X 45 DEGREE BEND W/THRUST BLOCKS

CUT AND TIE TO EX. 12" WATER MAIN WITH 1 - 12" X 12" TEE W/THRUST BLOCK

PROP. 1 - 12" VALVE, RJ

1 - 12" X 12" TEE, RJ

PROP. 1 - 12" VALVE, RJ

PROP. 1 - REMOVE FIRE HYDRANT

PROP. 90 LF - ABANDON 12" UTILITY PIPE

PROP. 165 LF - ABANDON 12" UTILITY PIPE

END TIP PROJECT U-5824  
STA. 106 + 65.31

THE ESTIMATED QUANTITY OF DUCTILE IRON WATER PIPE FITTINGS ON THIS PLAN SHEET IS 3111 POUNDS. THE ACTUAL QUANTITY AND TYPE OF FITTINGS WILL VARY BASED ON FIELD CONDITIONS.

DOA: L:\Secure\_DCS\Projects\6058\005\_MCDOT\W\IT\U\000\_CAD\G\940\_CAD\TIP\Utilities\Engineer\huc\Proj\U5824\UC\_Plan\JL.AGREEMENT.dgn