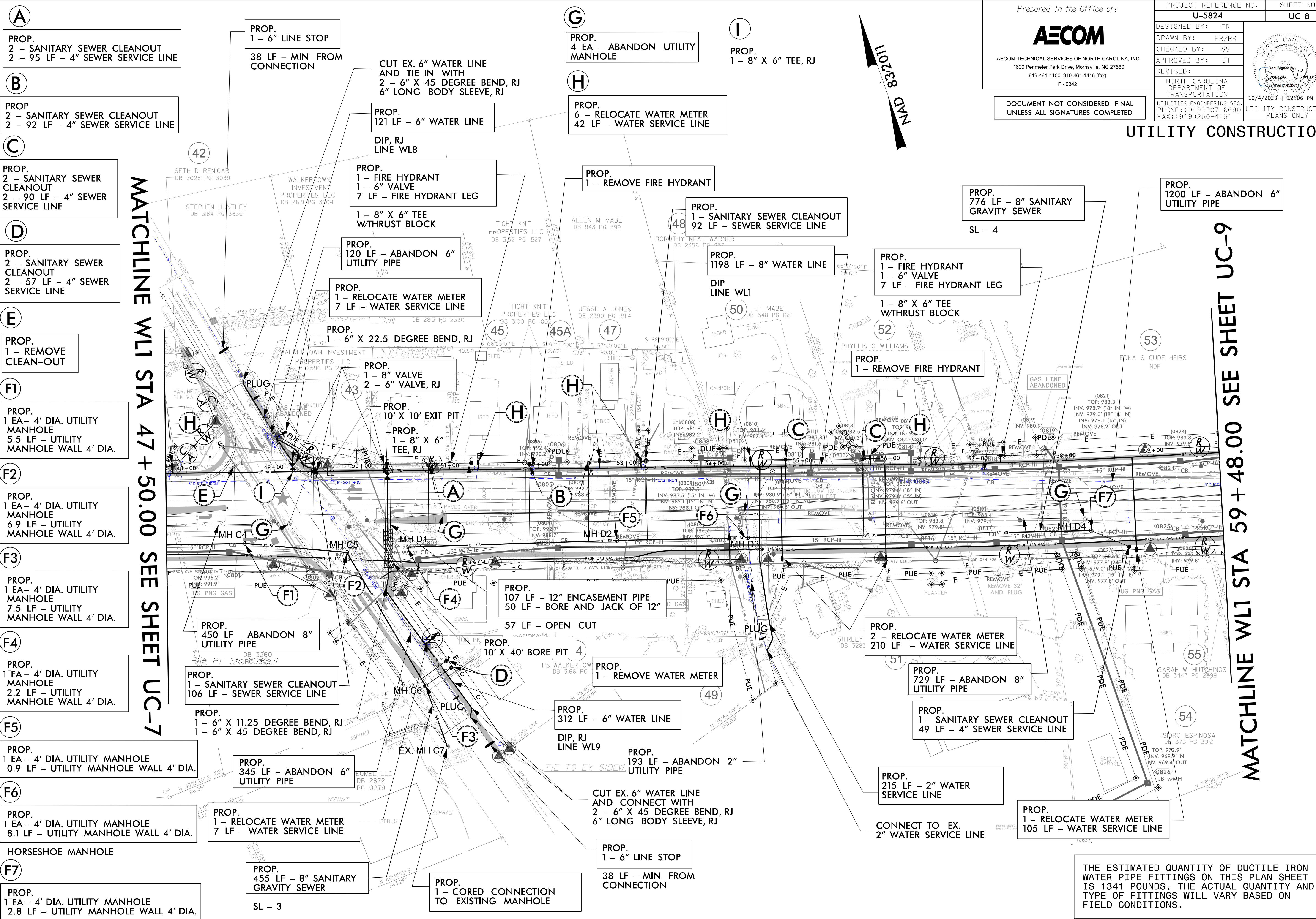


Prepared in the Office of:
AECOM
AECOM TECHNICAL SERVICES OF NORTH CAROLINA, INC.
1600 Perimeter Park Drive, Morrisville, NC 27560
919-461-1100 919-461-1415 (fax)
F - 0342

PROJECT REFERENCE NO.	U-5824	SHEET NO.	UC-8
DESIGNED BY:	FR		
DRAWN BY:	FR/RR		
CHECKED BY:	SS		
APPROVED BY:	JT		
REVISED:			
NORTH CAROLINA DEPARTMENT OF TRANSPORTATION		10/4/2023 11:12:06 PM EDT	
UTILITIES ENGINEERING SEC.		UTILITY CONSTRUCTION PLANS ONLY	
PHONE: (919) 707-6690		FAX: (919) 250-4151	

DOCUMENT NOT CONSIDERED FINAL
UNLESS ALL SIGNATURES COMPLETED

UTILITY CONSTRUCTION



MATCHLINE WL1 STA 47 + 50.00 SEE SHEET UC-7

MATCHLINE WL1 STA 59 + 48.00 SEE SHEET UC-9

- (A)**
PROP.
2 - SANITARY SEWER CLEANOUT
2 - 95 LF - 4" SEWER SERVICE LINE
- (B)**
PROP.
2 - SANITARY SEWER CLEANOUT
2 - 92 LF - 4" SEWER SERVICE LINE
- (C)**
PROP.
2 - SANITARY SEWER CLEANOUT
2 - 90 LF - 4" SEWER SERVICE LINE
- (D)**
PROP.
2 - SANITARY SEWER CLEANOUT
2 - 57 LF - 4" SEWER SERVICE LINE
- (E)**
PROP.
1 - REMOVE CLEAN-OUT
- (F1)**
PROP.
1 EA - 4' DIA. UTILITY MANHOLE
5.5 LF - UTILITY MANHOLE WALL 4' DIA.
- (F2)**
PROP.
1 EA - 4' DIA. UTILITY MANHOLE
6.9 LF - UTILITY MANHOLE WALL 4' DIA.
- (F3)**
PROP.
1 EA - 4' DIA. UTILITY MANHOLE
7.5 LF - UTILITY MANHOLE WALL 4' DIA.
- (F4)**
PROP.
1 EA - 4' DIA. UTILITY MANHOLE
2.2 LF - UTILITY MANHOLE WALL 4' DIA.
- (F5)**
PROP.
1 EA - 4' DIA. UTILITY MANHOLE
0.9 LF - UTILITY MANHOLE WALL 4' DIA.
- (F6)**
PROP.
1 EA - 4' DIA. UTILITY MANHOLE
8.1 LF - UTILITY MANHOLE WALL 4' DIA.
- (F7)**
HORSESHOE MANHOLE
PROP.
1 EA - 4' DIA. UTILITY MANHOLE
2.8 LF - UTILITY MANHOLE WALL 4' DIA.

PROP.
1 - 6" LINE STOP
38 LF - MIN FROM CONNECTION

CUT EX. 6" WATER LINE AND TIE IN WITH
2 - 6" X 45 DEGREE BEND, RJ
6" LONG BODY SLEEVE, RJ

PROP.
4 EA - ABANDON UTILITY MANHOLE

PROP.
1 - 8" X 6" TEE, RJ

PROP.
6 - RELOCATE WATER METER
42 LF - WATER SERVICE LINE

PROP.
121 LF - 6" WATER LINE
DIP, RJ
LINE WL8

PROP.
1 - FIRE HYDRANT
1 - 6" VALVE
7 LF - FIRE HYDRANT LEG

PROP.
1 - REMOVE FIRE HYDRANT

PROP.
1 - SANITARY SEWER CLEANOUT
92 LF - SEWER SERVICE LINE

PROP.
776 LF - 8" SANITARY GRAVITY SEWER
SL - 4

PROP.
1200 LF - ABANDON 6" UTILITY PIPE

PROP.
120 LF - ABANDON 6" UTILITY PIPE

PROP.
1 - RELOCATE WATER METER
7 LF - WATER SERVICE LINE

PROP.
1 - 6" X 22.5 DEGREE BEND, RJ

PROP.
1 - 8" VALVE
2 - 6" VALVE, RJ

PROP.
10' X 10' EXIT PIT

PROP.
1 - 8" X 6" TEE, RJ

PROP.
107 LF - 12" ENCASUREMENT PIPE
50 LF - BORE AND JACK OF 12"

57 LF - OPEN CUT

PROP.
10' X 40' BORE PIT 4

PROP.
1 - REMOVE WATER METER

PROP.
312 LF - 6" WATER LINE
DIP, RJ
LINE WL9

PROP.
193 LF - ABANDON 2" UTILITY PIPE

CUT EX. 6" WATER LINE AND CONNECT WITH
2 - 6" X 45 DEGREE BEND, RJ
6" LONG BODY SLEEVE, RJ

PROP.
1 - 6" LINE STOP
38 LF - MIN FROM CONNECTION

PROP.
1 - CORED CONNECTION TO EXISTING MANHOLE

PROP.
1198 LF - 8" WATER LINE
DIP
LINE WL1

PROP.
1 - FIRE HYDRANT
1 - 6" VALVE
7 LF - FIRE HYDRANT LEG

PROP.
1 - REMOVE FIRE HYDRANT

PROP.
2 - RELOCATE WATER METER
210 LF - WATER SERVICE LINE

PROP.
729 LF - ABANDON 8" UTILITY PIPE

PROP.
1 - SANITARY SEWER CLEANOUT
49 LF - 4" SEWER SERVICE LINE

PROP.
215 LF - 2" WATER SERVICE LINE

PROP.
1 - RELOCATE WATER METER
105 LF - WATER SERVICE LINE

THE ESTIMATED QUANTITY OF DUCTILE IRON WATER PIPE FITTINGS ON THIS PLAN SHEET IS 1341 POUNDS. THE ACTUAL QUANTITY AND TYPE OF FITTINGS WILL VARY BASED ON FIELD CONDITIONS.

DATE: L:\Secure_LDS3\Pro\Jobs\60381005_UCDOT\W\517A\900_CAD_GIS\900_CAD\DWG\UC-7_T\Utilities\Engineering\UC\Pro\U5824_UC-8.dwg, B. AGREEMENT.dgn