

Prepared in the Office of:



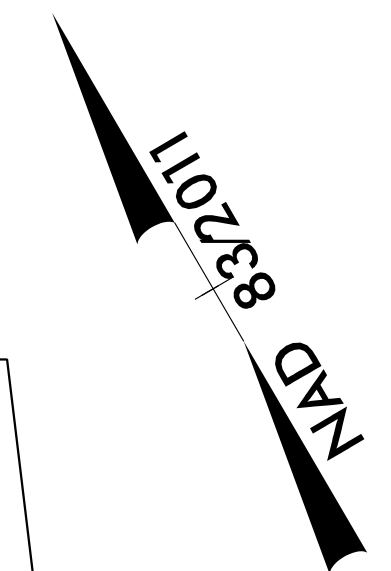
AECOM TECHNICAL SERVICES OF NORTH CAROLINA, INC.  
1600 Perimeter Park Drive, Morrisville, NC 27560  
919-461-1100 919-461-1415 (fax)  
F-0342

PROJECT REFERENCE NO.	U-5824	SHEET NO.	UC-4
DESIGNED BY:	FR		
DRAWN BY:	FR/RR		
CHECKED BY:	SS		
APPROVED BY:	JT		
REVISED:			
NORTH CAROLINA DEPARTMENT OF TRANSPORTATION		10/4/2023 11:22:06 PM EDT	
UTILITIES ENGINEERING SEC.		UTILITY CONSTRUCTION PLANS ONLY	
PHONE: (919) 707-6690		FAX: (919) 250-4151	

DOCUMENT NOT CONSIDERED FINAL UNLESS ALL SIGNATURES COMPLETED

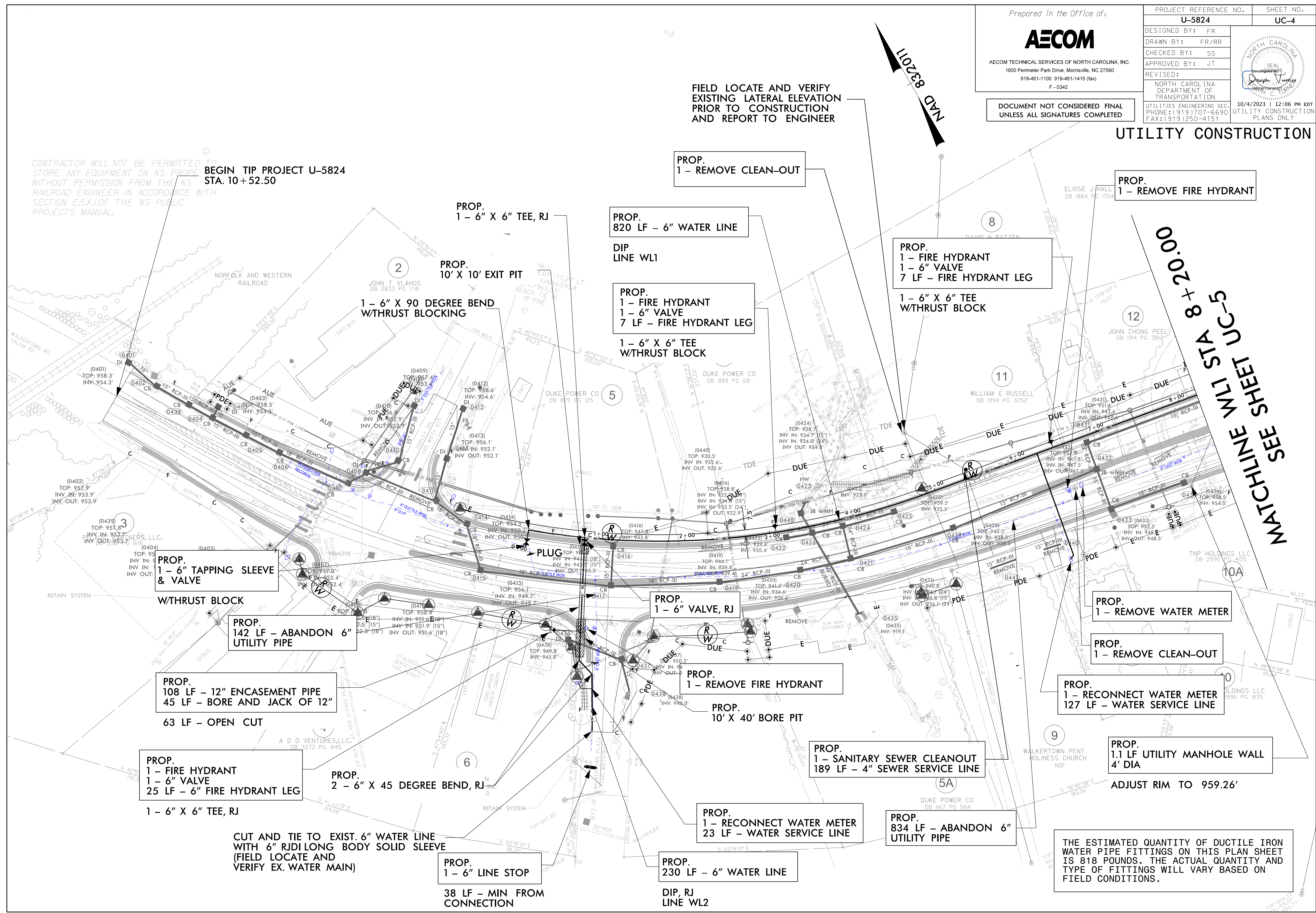
### UTILITY CONSTRUCTION

FIELD LOCATE AND VERIFY EXISTING LATERAL ELEVATION PRIOR TO CONSTRUCTION AND REPORT TO ENGINEER



CONTRACTOR WILL NOT BE PERMITTED TO STORE ANY EQUIPMENT ON NS PROPE WITHOUT PERMISSION FROM THE NS RAILROAD ENGINEER IN ACCORDANCE WITH SECTION E.5.K.1 OF THE NS PUBLIC PROJECTS MANUAL.

BEGIN TIP PROJECT U-5824 STA. 10 + 52.50



MATCHLINE SEE SHEET UC-5 STA 8 + 20.00

PROP. 1 - 6" TAPPING SLEEVE & VALVE  
WTHRUST BLOCK

PROP. 142 LF - ABANDON 6" UTILITY PIPE

PROP. 108 LF - 12" ENCASEMENT PIPE  
45 LF - BORE AND JACK OF 12"  
63 LF - OPEN CUT

PROP. 1 - FIRE HYDRANT  
1 - 6" VALVE  
25 LF - 6" FIRE HYDRANT LEG  
1 - 6" X 6" TEE, RJ

CUT AND TIE TO EXIST. 6" WATER LINE WITH 6" RJDI LONG BODY SOLID SLEEVE (FIELD LOCATE AND VERIFY EX. WATER MAIN)

PROP. 1 - 6" LINE STOP  
38 LF - MIN FROM CONNECTION

PROP. 1 - 6" X 6" TEE, RJ

PROP. 10' X 10' EXIT PIT  
1 - 6" X 90 DEGREE BEND WTHRUST BLOCKING

PROP. 820 LF - 6" WATER LINE  
DIP LINE WL1

PROP. 1 - FIRE HYDRANT  
1 - 6" VALVE  
7 LF - FIRE HYDRANT LEG

1 - 6" X 6" TEE WTHRUST BLOCK

PROP. 1 - 6" VALVE, RJ

PROP. 1 - REMOVE FIRE HYDRANT

PROP. 10' X 40' BORE PIT

PROP. 1 - RECONNECT WATER METER  
23 LF - WATER SERVICE LINE

PROP. 230 LF - 6" WATER LINE  
DIP, RJ LINE WL2

PROP. 1 - SANITARY SEWER CLEANOUT  
189 LF - 4" SEWER SERVICE LINE

PROP. 834 LF - ABANDON 6" UTILITY PIPE

PROP. 1 - FIRE HYDRANT  
1 - 6" VALVE  
7 LF - FIRE HYDRANT LEG  
1 - 6" X 6" TEE WTHRUST BLOCK

PROP. 1 - REMOVE FIRE HYDRANT

PROP. 1 - REMOVE WATER METER

PROP. 1 - REMOVE CLEAN-OUT

PROP. 1 - RECONNECT WATER METER  
127 LF - WATER SERVICE LINE

PROP. 1.1 LF UTILITY MANHOLE WALL  
4" DIA  
ADJUST RIM TO 959.26'

THE ESTIMATED QUANTITY OF DUCTILE IRON WATER PIPE FITTINGS ON THIS PLAN SHEET IS 818 POUNDS. THE ACTUAL QUANTITY AND TYPE OF FITTINGS WILL VARY BASED ON FIELD CONDITIONS.