

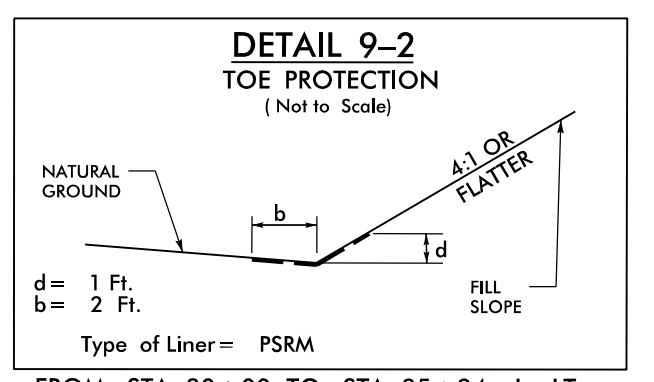
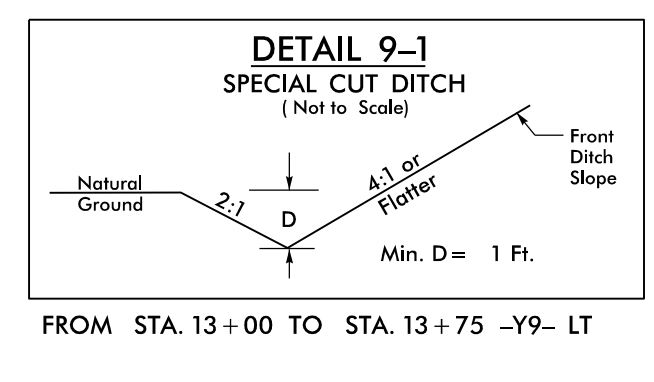
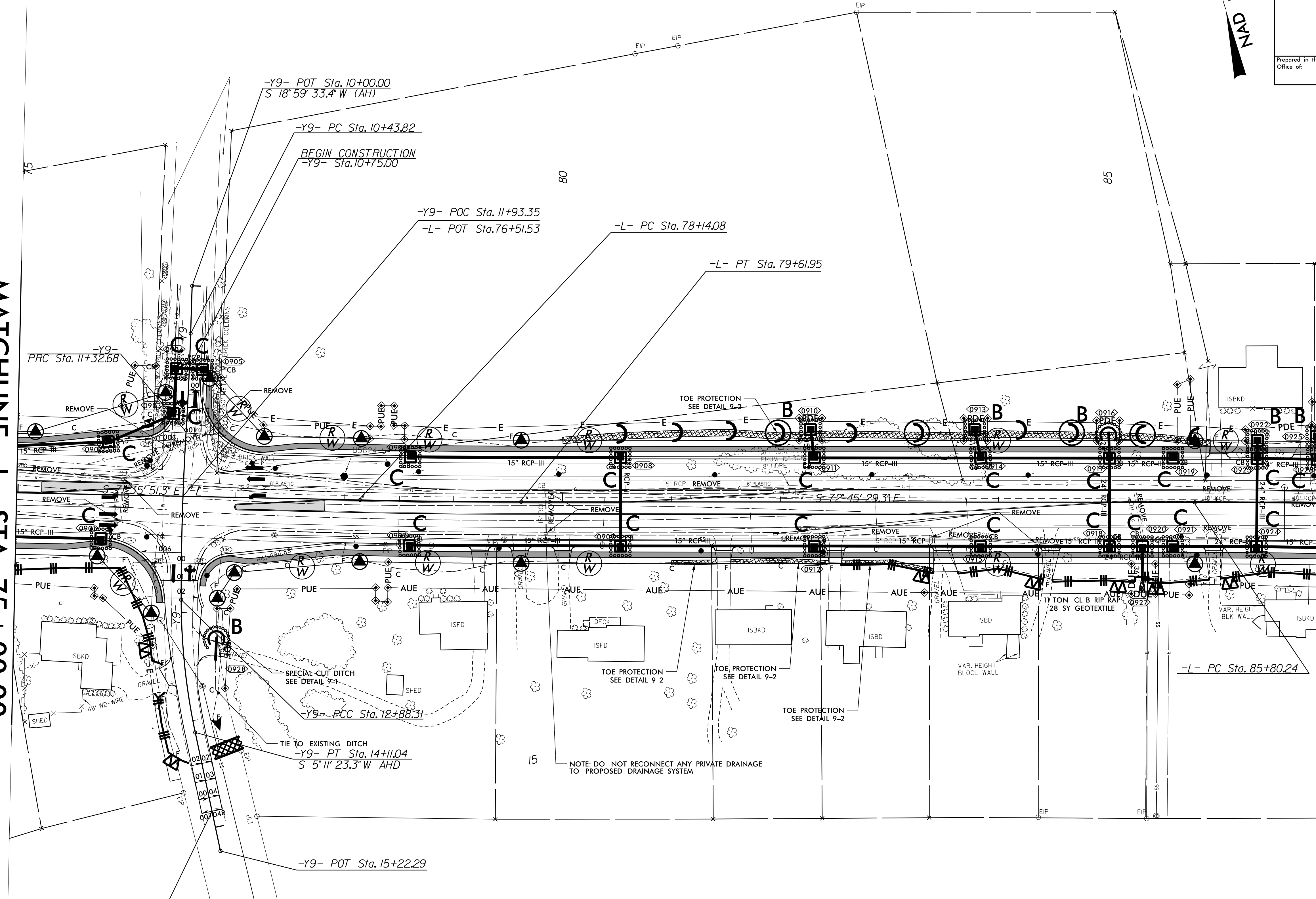


-L-		-Y9-		
PI Sta 78+88.02	PI Sta 87+15.36	PI Sta 10+88.25	PI Sta 12+10.52	PI Sta 13+49.89
$\Delta = 1' 09' 38.0''$ (LT)	$\Delta = 2' 07' 14.6''$ (RT)	$\Delta = 1' 41' 49.3''$ (RT)	$\Delta = 3' 34' 51.9''$ (LT)	$\Delta = 1' 55' 07.5''$ (LT)
$D = 0' 47' 05.5''$	$D = 0' 47' 05.5''$	$D = 1' 54' 35.5''$	$D = 2' 18' 03.7''$	$D = 9' 42' 40.1''$
$L = 147.86'$	$L = 270.20'$	$L = 88.86'$	$L = 155.63'$	$L = 122.73'$
$T = 73.93'$	$T = 135.12'$	$T = 44.43'$	$T = 77.84'$	$T = 61.59'$
$R = 7,300.00'$	$R = 7,300.00'$	$R = 3,000.00'$	$R = 2,490.00'$	$R = 590.00'$
SE = NC	SE = NC			

INSTALL MATTING FOR EROSION CONTROL IN ALL PROPOSED DETAIL DITCHES.

MATCHLINE -L- STA 75+00.00
(SEE SHEET 8)

MATCHLINE -L- STA 87+00.00
(SEE SHEET 10)



REVISIONS

8/17/99

09 AUG 2023 15:30
02:50:46 EC:boh-1.ino1.dgn
NEWBOND