

PROJECT REFERENCE NO. U-5824	SHEET NO. EC-14/CONST.6
RW SHEET NO.	HYDRAULICS ENGINEER
ROADWAY DESIGN ENGINEER	

Prepared in the Office of: **SUMMIT** DESIGN AND ENGINEERING SERVICES

NC FIRM LICENSE Nos P-0339
320 Executive Ct
Hillsborough, NC 27278
(919) 732-3863
(919) 732-6676 (FAX)

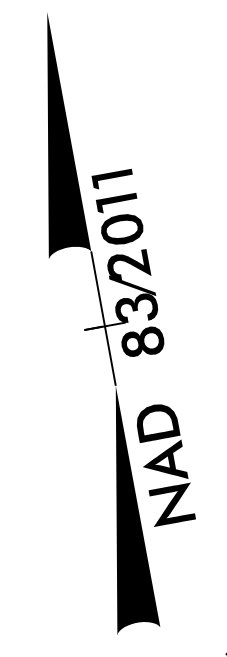
L

PI Sta 44+05.41	PI Sta 50+18.92
$\Delta = 5' 46" 44.5" (RT)$	$\Delta = 4' 43" 39.8" (LT)$
$D = 2' 29" 28.0"$	$D = 2' 29" 28.0"$
$L = 231.99'$	$L = 189.78'$
$T = 116.09'$	$T = 94.95'$
$R = 2,300.00'$	$R = 2,300.00'$
$SE = 3\%$	$SE = 3\%$
$RO = 144'$	$RO = 144'$

INSTALL MATTING FOR EROSION CONTROL IN ALL PROPOSED DETAIL DITCHES.

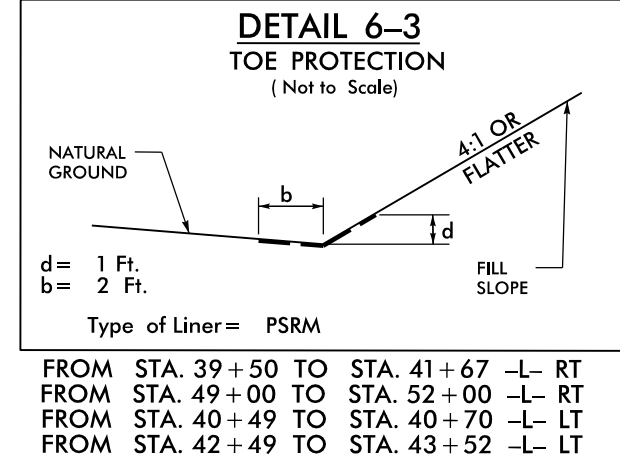
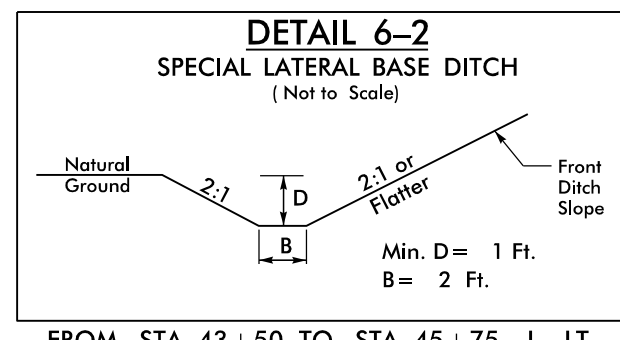
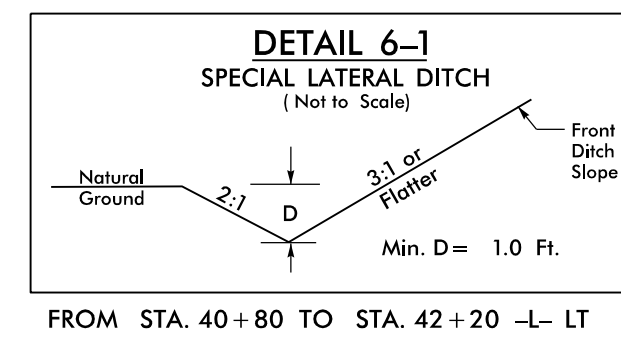
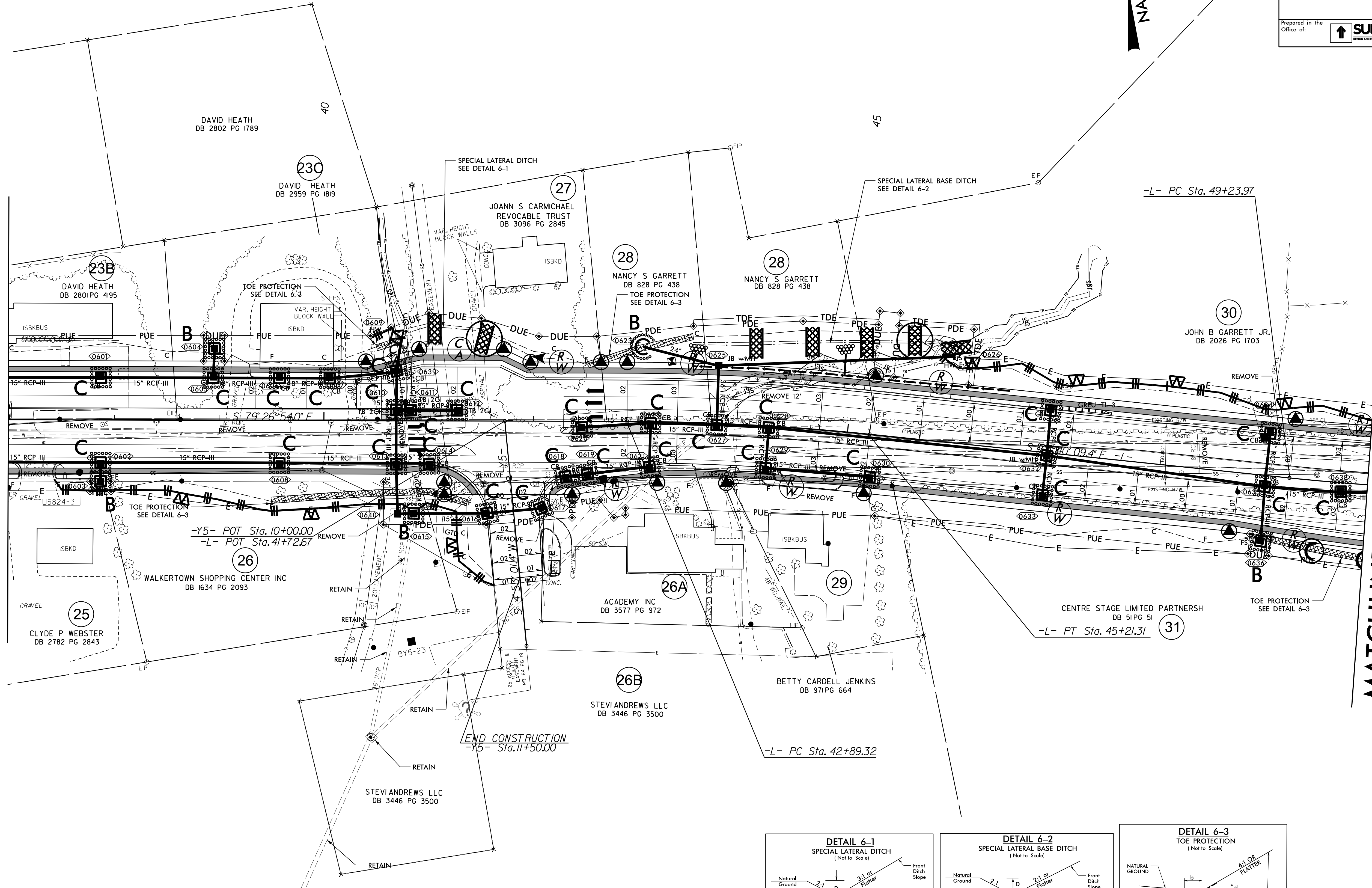
NOTE: UTILIZE COIR FIBER MATTING ADJACENT TO WETLANDS/ JURISDICTIONAL AREAS, AND AS DIRECTED

NOTE: UTILIZE TEMPORARY SEDIMENT BASIN OR SPECIAL STILLING BASIN(S) AS STILLING BASIN WHERE APPLICABLE.



MATCHLINE -L- STA 37+00.00
(SEE SHEET 5)

MATCHLINE -L- STA 50+00.00
(SEE SHEET 7)



REVISIONS

8/17/99

09-AUG-2023 13:30
046204-EC-Pan-6-1.mxd.dgn
Newman