
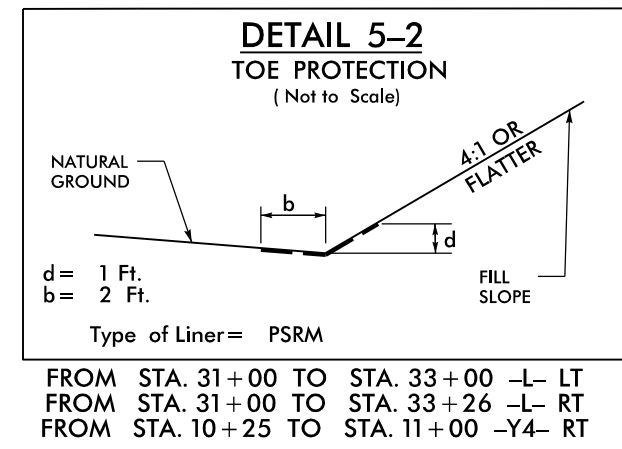
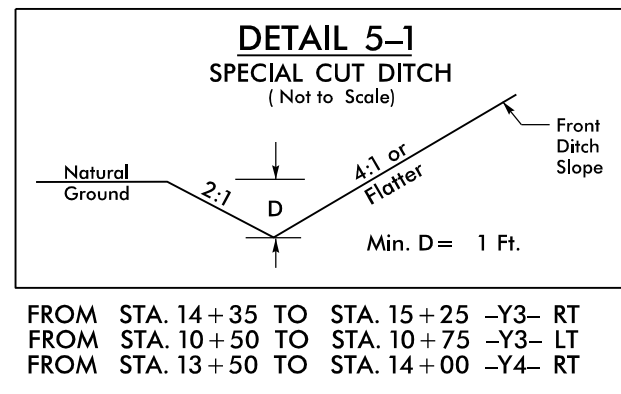


PROJECT REFERENCE NO. U-5824	SHEET NO. EC-13/CONST.5
RW SHEET NO.	
ROADWAY DESIGN ENGINEER	HYDRAULICS ENGINEER
Prepared in the Office of:	
	
<small>NC FIRM LICENSE Nos P-0339 320 Executive Ct Hillsborough, NC 27278 (919) 732-3883 (919) 732-6676 (Fax)</small>	



-Y4-
PI Sta 10+79.96
 $\Delta = 1' 11" 56.8" (RT)$
 $D = 1' 08" 45.3"$
 $L = 104.64'$
 $T = 52.32'$
 $R = 5,000.00'$

NOTE: UTILIZE TEMPORARY SEDIMENT BASIN OR SPECIAL STILLING BASIN(S) AS STILLING BASIN WHERE APPLICABLE.

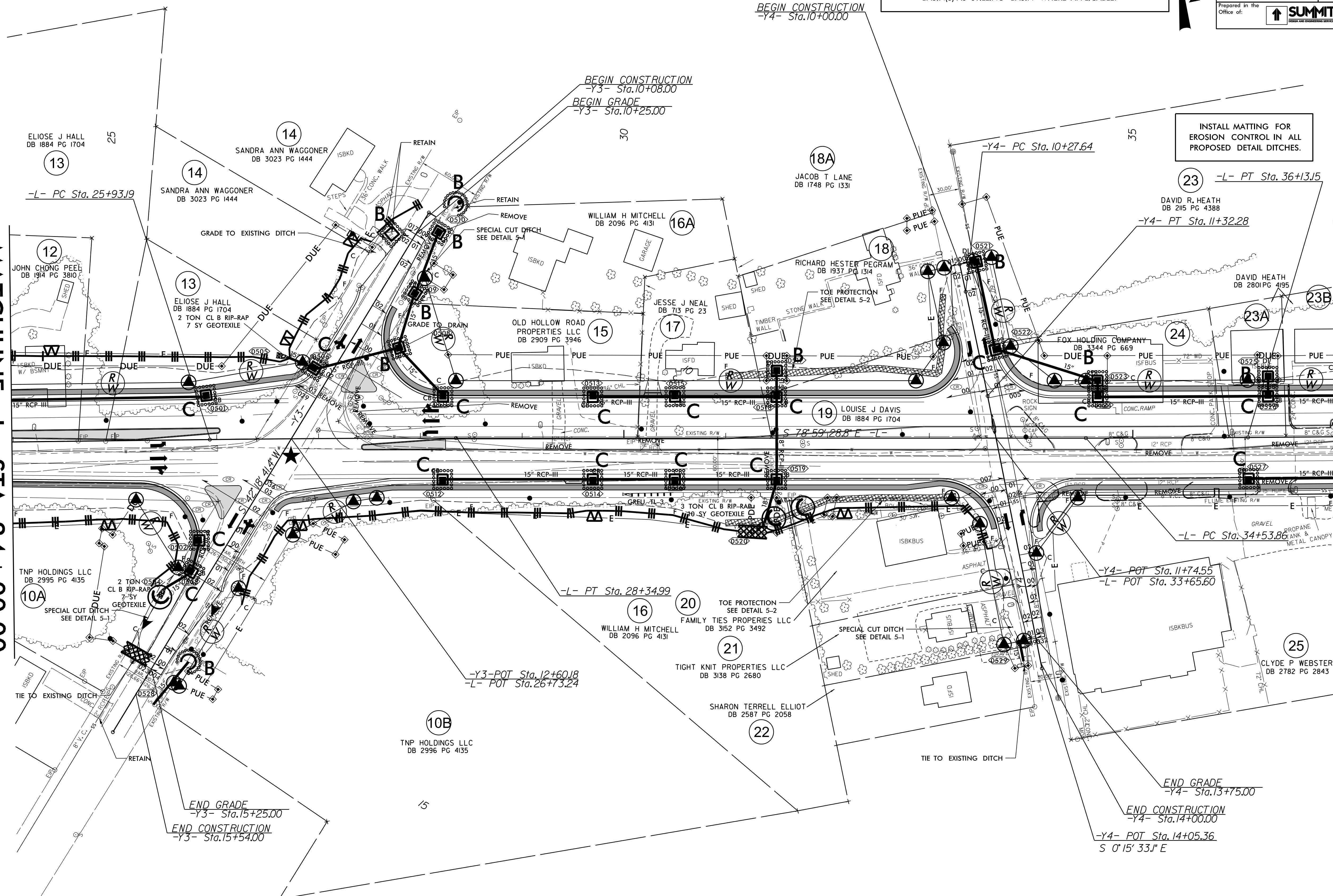
NAD 83/2011

-L-
PI Sta 27+14.09
 $\Delta = 0' 41" 30.0" (RT)$
 $D = 0' 17" 09.8"$
 $L = 241.80'$
 $T = 120.90'$
 $R = 20,030.00'$
SE = NC

PI Sta 35+33.50
 $\Delta = 0' 27" 25.2" (LT)$
 $D = 0' 17" 12.9"$
 $L = 159.29'$
 $T = 79.64'$
 $R = 19,970.00'$
SE = NC

MATCHLINE -L- STA 24 + 00.00
(SEE SHEET 4)

MATCHLINE -L- STA 37 + 00.00
(SEE SHEET 6)



INSTALL MATTING FOR EROSION CONTROL IN ALL PROPOSED DETAIL DITCHES.

REVISIONS

8/17/99

09-AUG-2023 15:30
09-620-EC-Pan-S-1.mxd.dgn
Newman