

L
 PI Sta 16+75.18
 $\Delta = 49' 58" 56.1"$ (LT)
 $D = 6' 01" 52.1"$
 $L = 828.74'$
 $T = 442.81'$
 $R = 950.00'$
 $SE = 47'$
 $RO = 192'$

PLACE MATTING FOR EROSION CONTROL ON SLOPES ADJACENT TO PERMITTED WETLANDS AS WORK ALLOWS

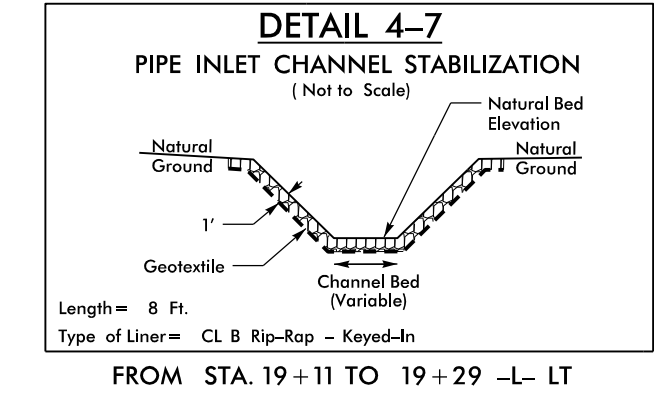
NOTE: UTILIZE COIR FIBER MATTING ADJACENT TO WETLANDS/JURISDICTIONAL AREAS, AND AS DIRECTED

INSTALL MATTING FOR EROSION CONTROL IN ALL PROPOSED DETAIL DITCHES.

NOTE: UTILIZE TEMPORARY SEDIMENT BASIN OR SPECIAL STILLING BASIN(S) AS STILLING BASIN WHERE APPLICABLE.

90 x 45 x 3
2 inch Skimmer
 with 1.750 inch Orifice Diameter
29 ft. weir
ID 4.1

80 x 40 x 3
2 inch Skimmer
 with 1.625 inch Orifice Diameter
24 ft. weir
ID 4.2



CONTRACTOR WILL NOT BE PERMITTED TO STORE ANY EQUIPMENT ON NS PROPERTY WITHOUT PERMISSION FROM THE NS RAILROAD ENGINEER IN ACCORDANCE WITH SECTION E.5.K.J OF THE NS PUBLIC PROJECTS MANUAL.

BEGIN TIP PROJECT U-5824
 -L- Sta.10+52.50

BEGIN CONSTRUCTION
 -Y1- Sta.10+75.00

-L- POT Sta.10+00.00

SPECIAL LATERAL 'V' DITCH
 SEE DETAIL 4-5
 47 TONS CL B RIP RAP
 104 SY GEOTEXTILE

PIPE INLET CHANNEL STABILIZATION
 SEE DETAIL 4-7
 3 TONS CL B RIP RAP
 6 SY GEOTEXTILE

SPECIAL LATERAL 'V' DITCH
 SEE DETAIL 4-4
 3 TONS CL B RIP RAP
 6 SY GEOTEXTILE

SPECIAL LATERAL 'V' DITCH
 SEE DETAIL 4-3
 8 TONS CL B RIP RAP
 18 SY GEOTEXTILE

8/17/99

ELIOSE J HALL
 DB 1884 PG 1704

DAVID H BATTEN
 DB 2813 PG 3290

JOHN CHONG PEEL
 DB 1914 PG 3810

WILLIAM E RUSSELL
 DB 1994 PG 3252

DUKE POWER CO
 DB 875 PG 125

-Y1- POT Sta.12+49.30
 -L- POC Sta.13+95.36
 -Y2- POT Sta.10+00.00
 -L- POC Sta.16+71.74

-L- PT Sta.20+61.11

24+00.00
 -L- STA 5)
 MATCHLINE (SEE SHEET 1)

REVISIONS

-L- PC Sta.12+32.37

PELAGIC PARTNERS, LLC.
 DB 3312 PG 1691

RETAIN SYSTEM

A D D VENTURES, LLC.
 DB 3272 PG 4145

A D D VENTURES, LLC.
 DB 3272 PG 4145

WALKERTOWN LUBE-N-WASH, INC
 DB 2111 PG 3660

TOE PROTECTION
 SEE DETAIL 4-6
 27 TONS CL B RIP RAP
 60 SY GEOTEXTILE

CL B RIP-RAP 2 TON
 GEOTEXTILE 7 SY

SPECIAL LATERAL 'V' DITCH
 SEE DETAIL 4-1

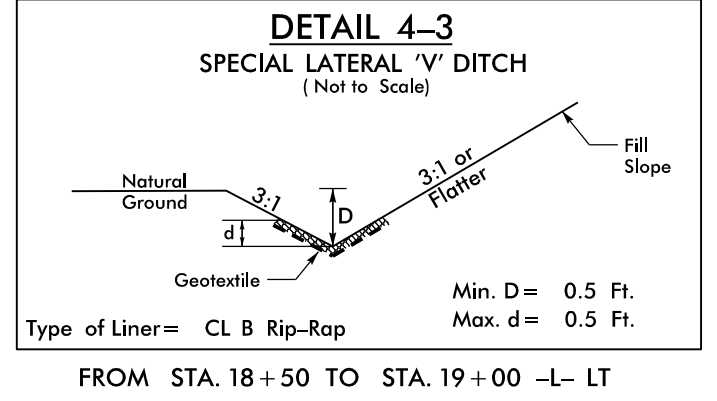
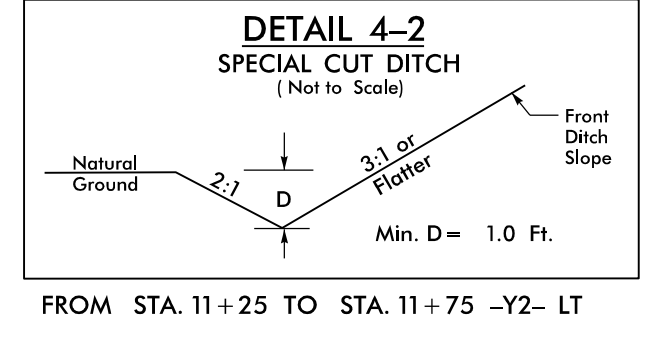
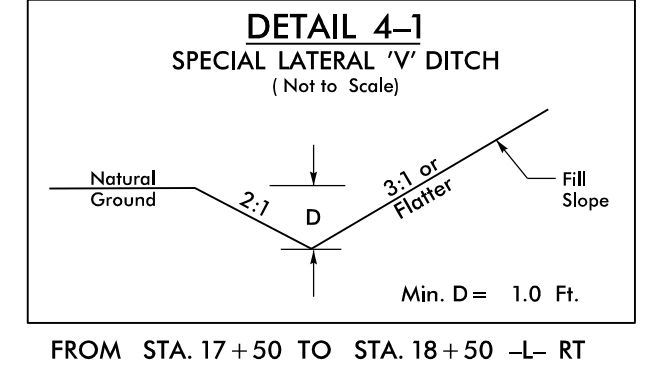
DUKE POWER CO
 DB 1167 PG 564

WALKERTOWN PENT
 HOLINESS CHURCH
 NDF

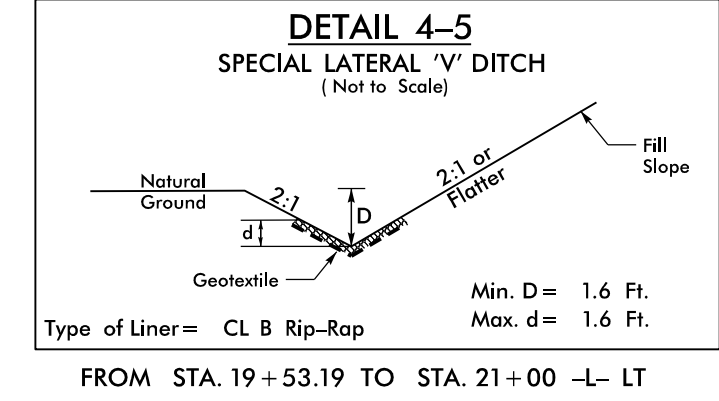
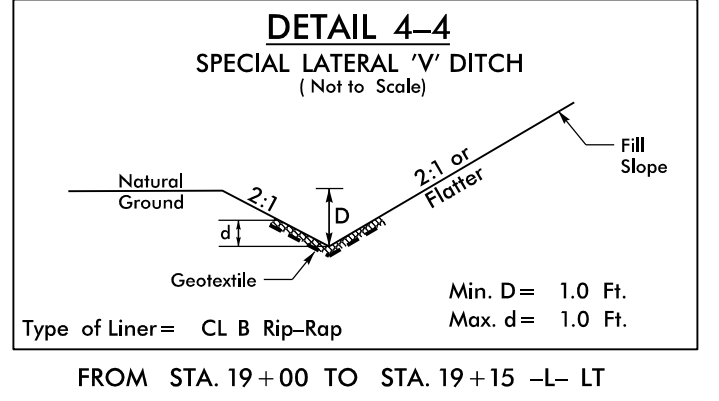
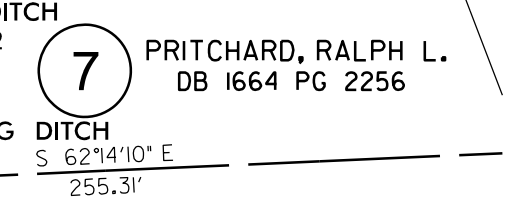
35 x 15 x 3
1.5 inch Skimmer
 with 0.5 inch Orifice Diameter
4 ft. weir
ID 4.3

TNP HOLDINGS LLC
 DB 2995 PG 4135

TNP HOLDINGS LLC
 DB 2996 PG 4135



END CONSTRUCTION
 -Y2- Sta.11+75.00



09 AUG 2023 13:30
 U5824-EC-12-Const-4-1.mxd.dgn