

PROJECT REFERENCE NO. U-5824	SHEET NO. EC-9/CONST.9
RW SHEET NO.	HYDRAULICS ENGINEER
ROADWAY DESIGN ENGINEER	

Prepared in the Office of: **SUMMIT** DESIGN AND ENGINEERING SERVICES

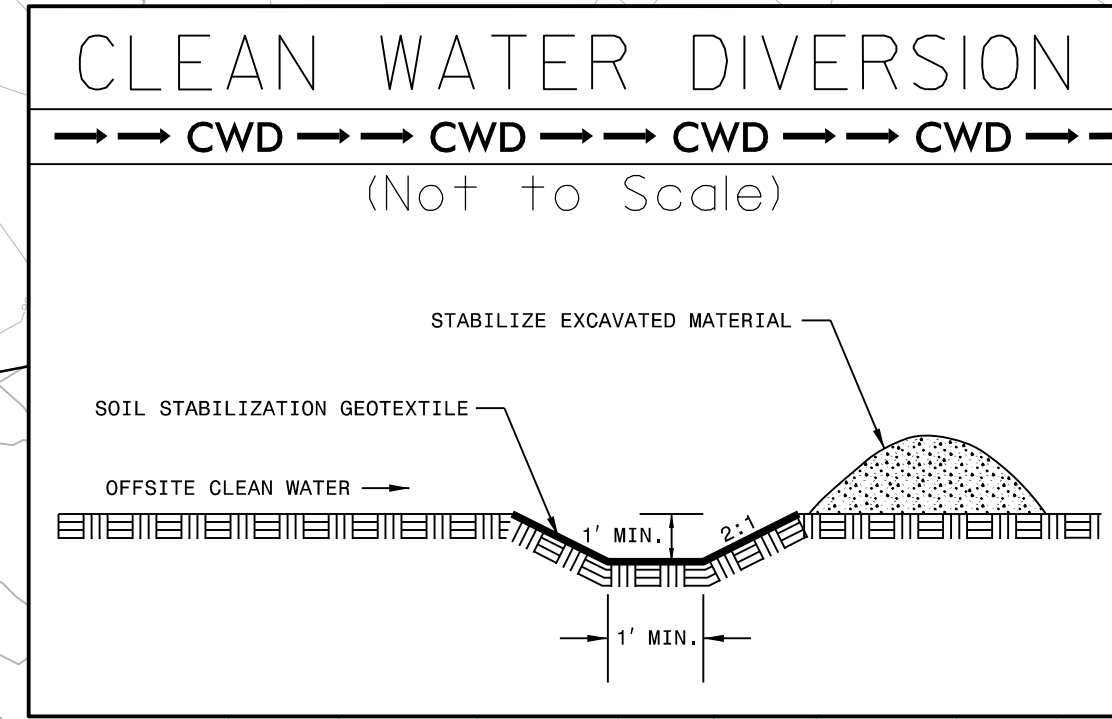
NC FIRM LICENSE Nos P-0339
220 Executive Ct
Hillsborough, NC 27278
(919) 732-3883
(919) 732-6676 (FAX)

CLEARING AND GRUBBING
EROSION CONTROL FOR
CONSTRUCTION SHEET 9

NOTE:
PLACE TEMPORARY ROCK SEDIMENT DAMS TYPE - B
AND TEMPORARY ROCK SILT CHECKS TYPE - A AT
DRAINAGE OUTLETS.

NOTE:
UTILIZE TEMPORARY SEDIMENT BASIN OR SPECIAL STILLING
BASIN(S) AS STILLING BASIN WHERE APPLICABLE.

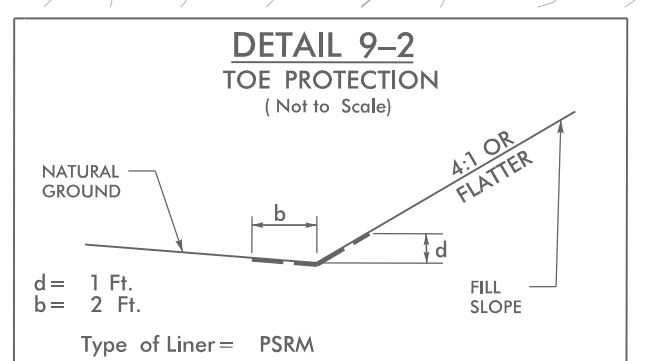
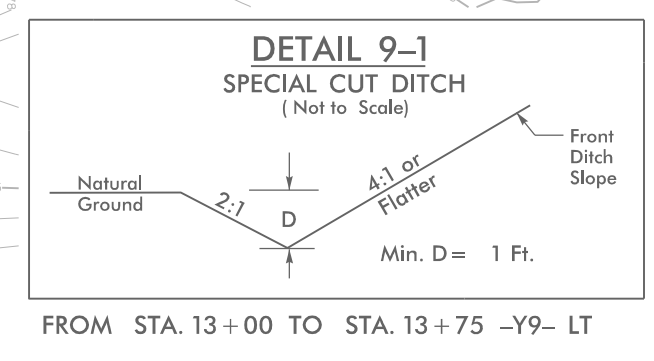
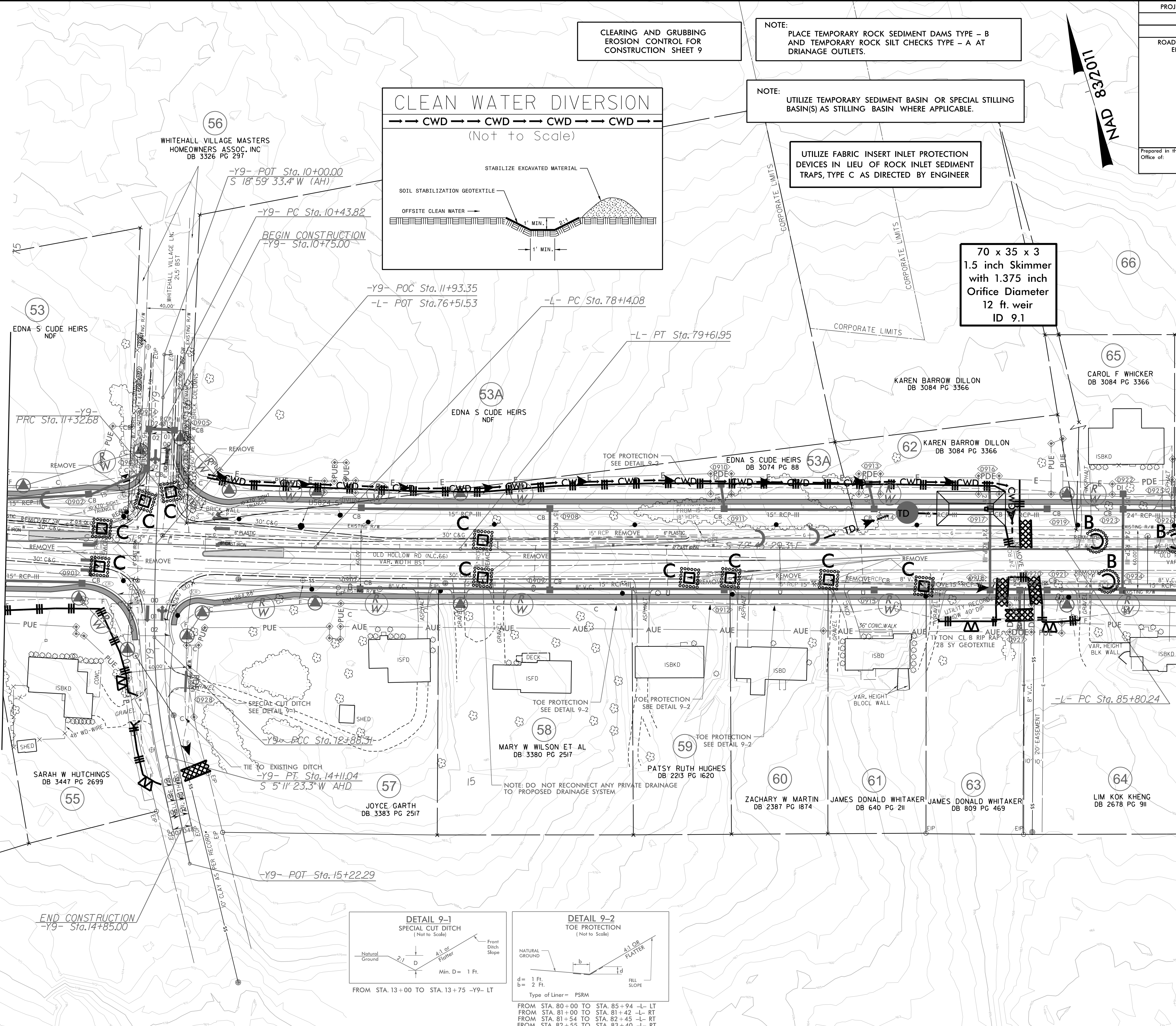
UTILIZE FABRIC INSERT INLET PROTECTION
DEVICES IN LIEU OF ROCK INLET SEDIMENT
TRAPS, TYPE C AS DIRECTED BY ENGINEER



70 x 35 x 3
1.5 inch Skimmer
with 1.375 inch
Orifice Diameter
12 ft. weir
ID 9.1

MATCHLINE -L- STA 75+00.00
(SEE SHEET 8)

MATCHLINE -L- STA 87+00.00
(SEE SHEET 10)



REVISIONS

8/17/99

09-AUG-2023 15:29
U:\5824\EC-Pan-1-C&G.dgn
REMOVED