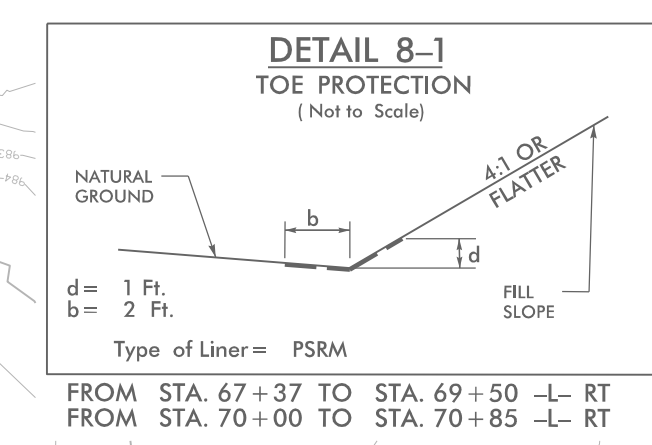


PROJECT REFERENCE NO. U-5824	SHEET NO. EC-8/CONST.8
RW SHEET NO.	HYDRAULICS ENGINEER
ROADWAY DESIGN ENGINEER	

Prepared in the Office of: **SUMMIT** DESIGN AND ENGINEERING SERVICES

NC FIRM LICENSE Nos P-0339
320 Executive Ct
Hillsborough, NC 27278
(919) 732-3883
(919) 732-6676 (FAX)

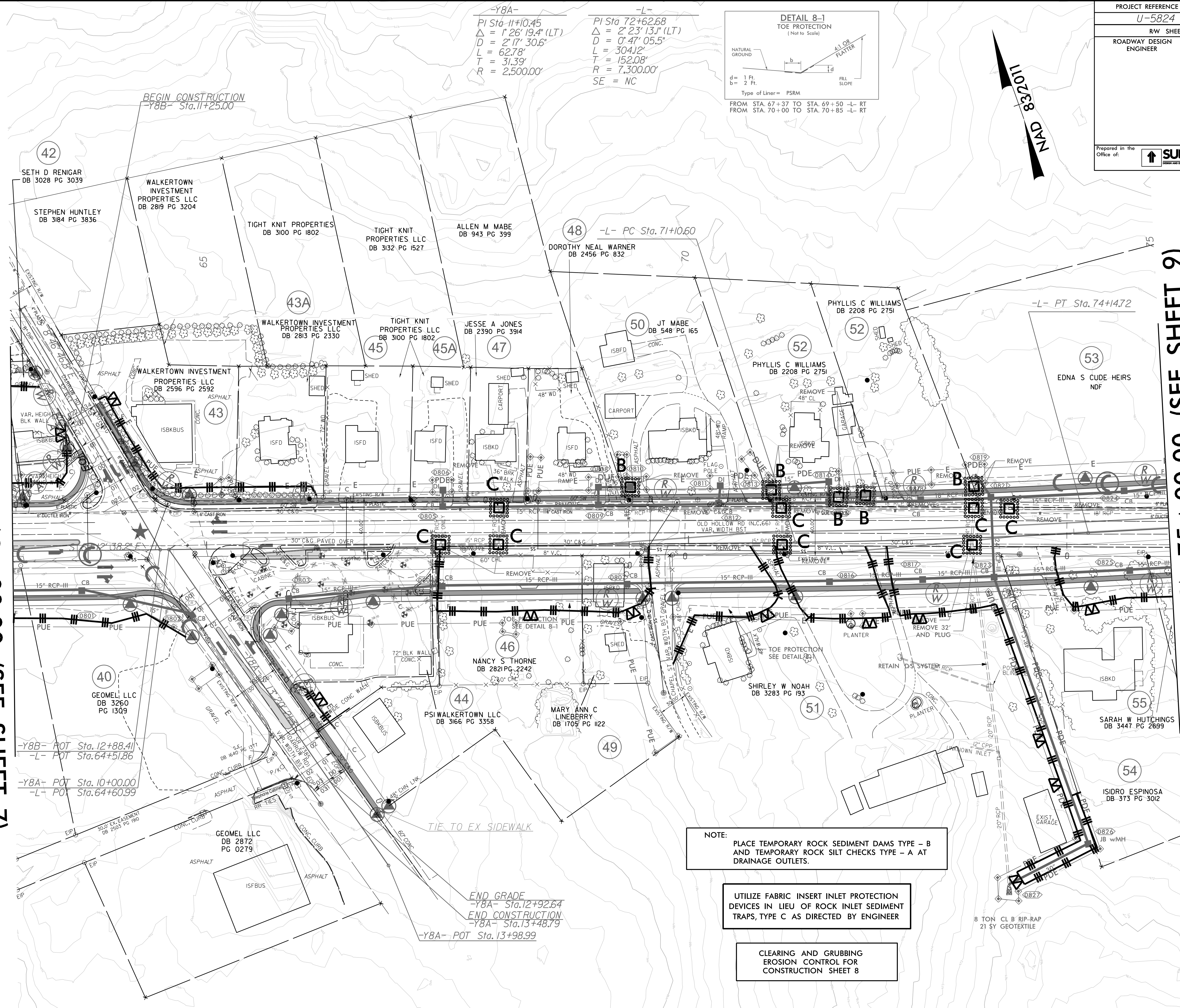


-Y8A-
PI Sta 11+10.45
 $\Delta = 1' 26' 19.4''$ (LT)
 $D = 2' 17' 30.6''$
 $L = 62.78'$
 $T = 31.39'$
 $R = 2,500.00'$

-L-
PI Sta 72+62.68
 $\Delta = 2' 23' 13.1''$ (LT)
 $D = 0' 47' 05.5''$
 $L = 304.12'$
 $T = 152.08'$
 $R = 7,300.00'$
 $SE = NC$

MATCHLINE -L- STA 63+00.00 (SEE SHEET 7)

MATCHLINE -L- STA 75+00.00 (SEE SHEET 9)



NOTE: PLACE TEMPORARY ROCK SEDIMENT DAMS TYPE - B AND TEMPORARY ROCK SILT CHECKS TYPE - A AT DRAINAGE OUTLETS.

UTILIZE FABRIC INSERT INLET PROTECTION DEVICES IN LIEU OF ROCK INLET SEDIMENT TRAPS, TYPE C AS DIRECTED BY ENGINEER

CLEARING AND GRUBBING EROSION CONTROL FOR CONSTRUCTION SHEET 8

END GRADE
-Y8A- Sta.12+92.64
END CONSTRUCTION
-Y8A- Sta.13+48.79
-Y8A- POT Sta.13+98.99

REVISIONS

8/17/99

05-AUG-2023 15:28
05-620-EC-PH-8-C&G.dgn
NEWBOND