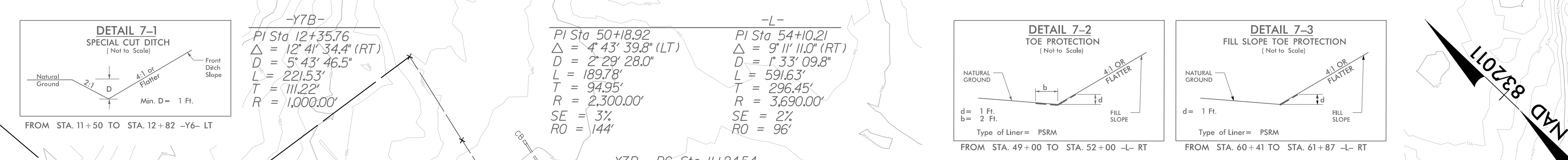


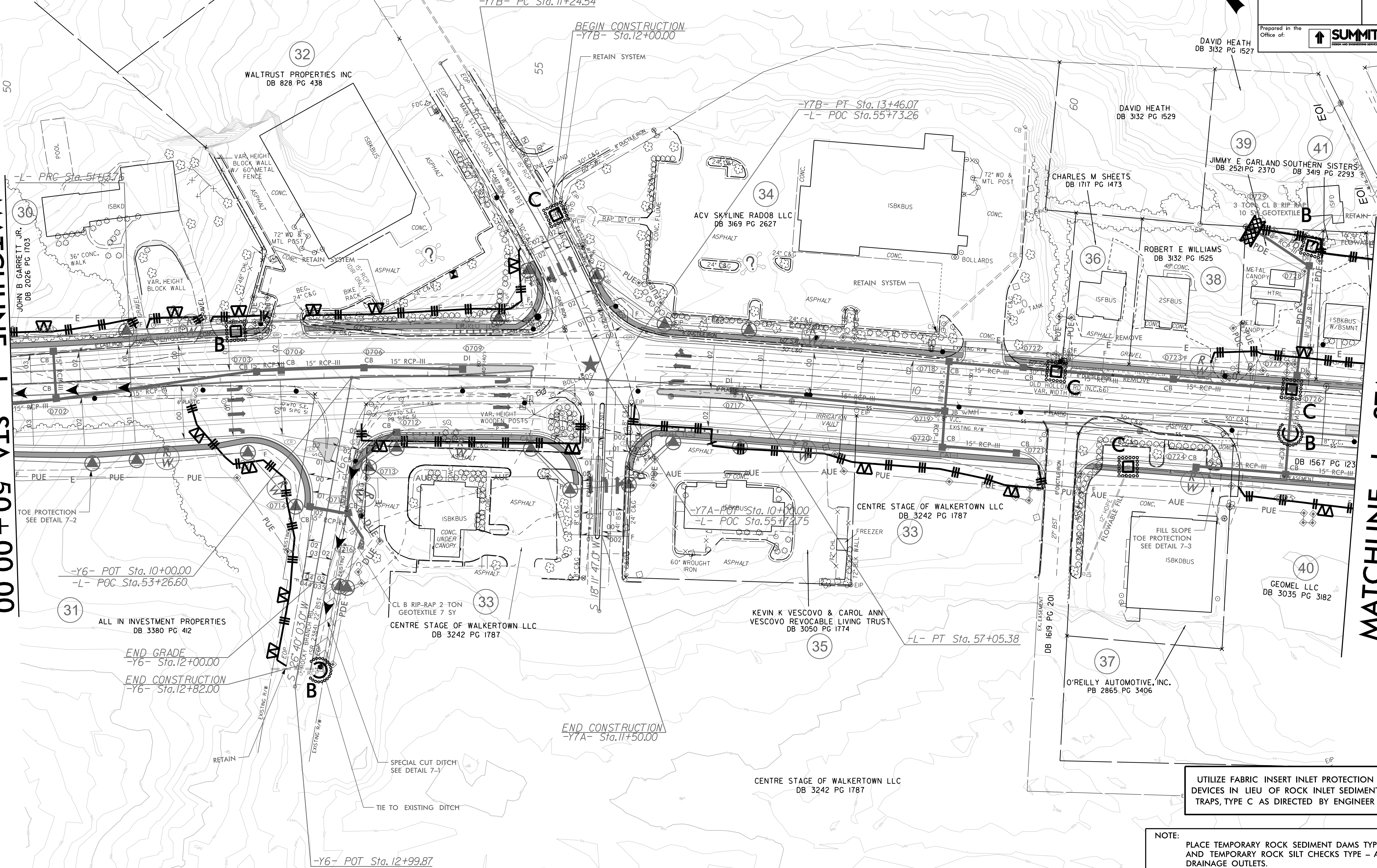
PROJECT REFERENCE NO. U-5824	SHEET NO. EC-7/CONST.7
RW SHEET NO.	
ROADWAY DESIGN ENGINEER	HYDRAULICS ENGINEER

Prepared in the Office of: **SUMMIT**
DESIGN AND ENGINEERING SERVICES
 NC FIRM LICENSE Nos P-0339, 320 Executive Ct, Hillsborough, NC 27278, (919) 732-3863, (919) 732-6676, FAX 1



MATCHLINE -L- STA 50+00.00
(SEE SHEET 6)

MATCHLINE -L- STA 63+00.00
(SEE SHEET 8)



UTILIZE FABRIC INSERT INLET PROTECTION DEVICES IN LIEU OF ROCK INLET SEDIMENT TRAPS, TYPE C AS DIRECTED BY ENGINEER

NOTE: PLACE TEMPORARY ROCK SEDIMENT DAMS TYPE - B AND TEMPORARY ROCK SILT CHECKS TYPE - A AT DRAINAGE OUTLETS.

CLEARING AND GRUBBING EROSION CONTROL FOR CONSTRUCTION SHEET 7

REVISIONS

8/17/19

09-AUG-2023 15:42
 05-620-EC-PAH-7-C&G.dgn
 NEWBORN