


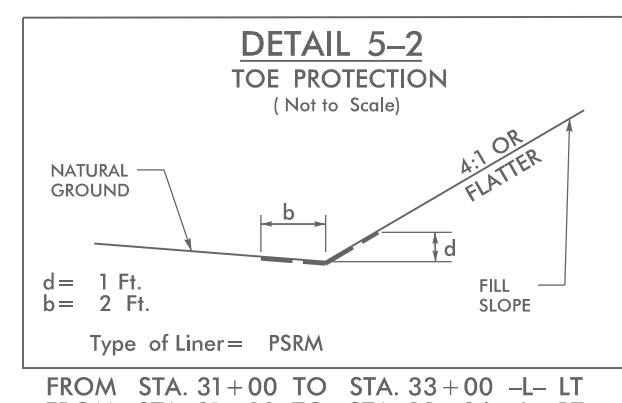
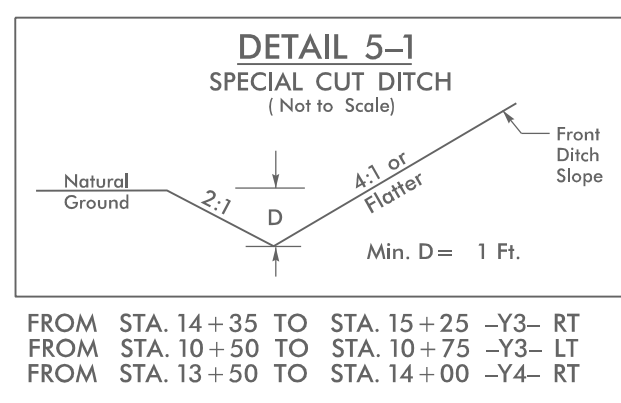
PROJECT REFERENCE NO. U-5824	SHEET NO. EC-5/CONST.5
RW SHEET NO.	
ROADWAY DESIGN ENGINEER	HYDRAULICS ENGINEER
Prepared in the Office of:	
	
<small>NC FIRM LICENSE Nos P-0339 320 Executive Ct Hillsborough, NC 27278 (919) 732-3883 (919) 732-6676 (FAX)</small>	

NOTE:  
PLACE TEMPORARY ROCK SEDIMENT DAMS TYPE - B AND TEMPORARY ROCK SILT CHECKS TYPE - A AT DRAINAGE OUTLETS

CLEARING AND GRUBBING EROSION CONTROL FOR CONSTRUCTION SHEET 5

PI Sta 27+14.09  
Δ = 0' 41' 30.0" (RT)  
D = 0' 17' 09.8"  
L = 241.80'  
T = 120.90'  
R = 20,030.00'  
SE = NC

PI Sta 35+33.50  
Δ = 0' 27' 25.2" (LT)  
D = 0' 17' 12.9"  
L = 159.29'  
T = 79.64'  
R = 19,970.00'  
SE = NC

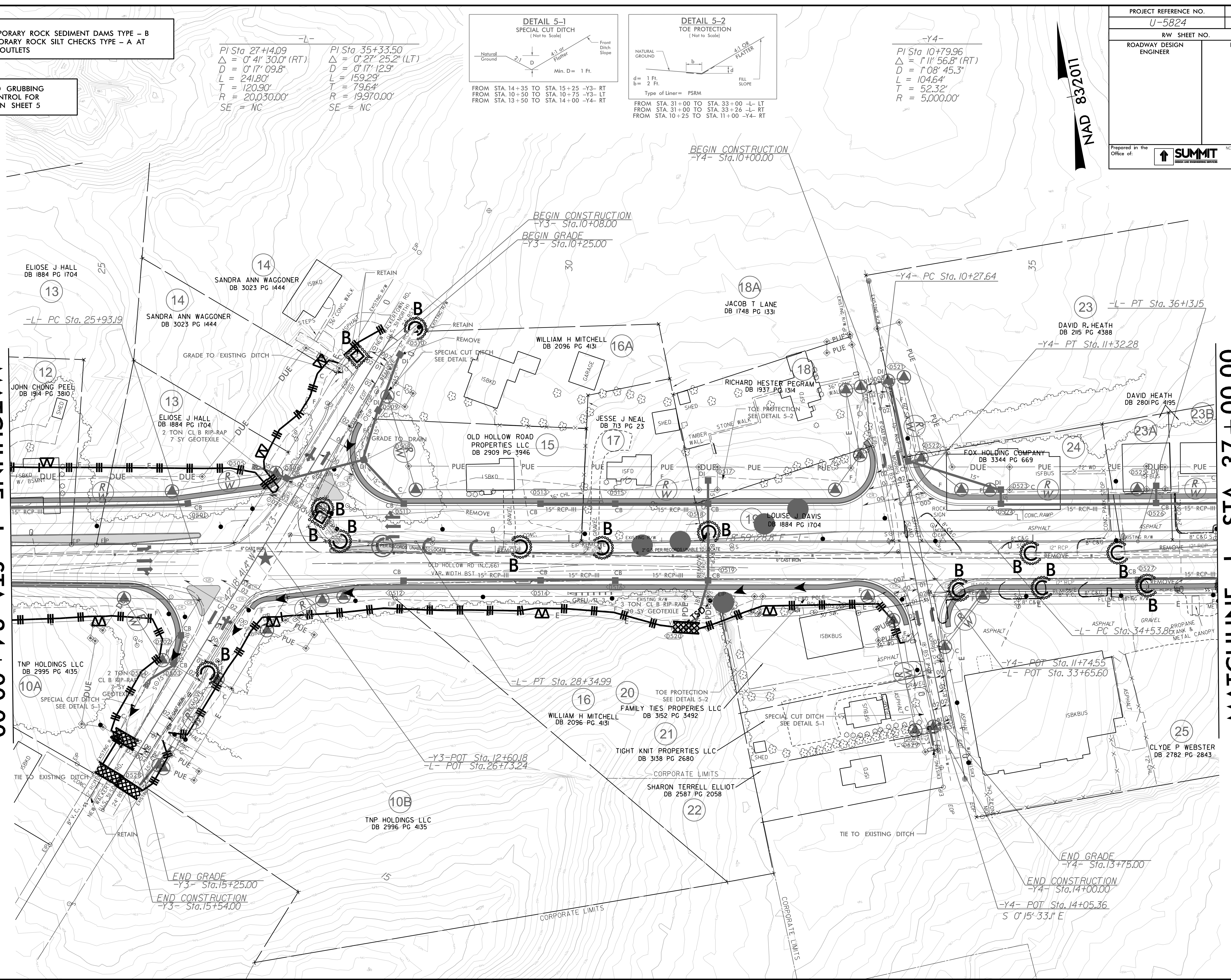


PI Sta 10+79.96  
Δ = 1' 11' 56.8" (RT)  
D = 1' 08' 45.3"  
L = 104.64'  
T = 52.32'  
R = 5,000.00'

NAD 83/2011

MATCHLINE -L- STA 24 + 00.00 (SEE SHEET 4)

MATCHLINE -L- STA 37 + 00.00 (SEE SHEET 6)



REVISIONS

8/17/99

09-AUG-2023 15:22  
09-620-EC-10h-5-C&G.dgn  
NEWBOND