

PROJECT REFERENCE NO. U-5824	SHEET NO. EC-4/CONST.4
RW SHEET NO.	HYDRAULICS ENGINEER
ROADWAY DESIGN ENGINEER	

Prepared in the Office of: **SUMMIT**
DESIGN AND ENGINEERING SERVICES
NC FIRM LICENSE Nos P-0339, 320 Executive Ct, Hillsborough, NC 27278, (919) 732-3883, (919) 732-6676 (FAX)

PI Sta 16+75.18
 $\Delta = 49' 58" 56.1"$ (LT)
 $D = 6' 01" 52.1"$
 $L = 828.74'$
 $T = 442.81'$
 $R = 950.00'$
 $SE = 47'$
 $RO = 192'$

NOTE:
 PLACE TEMPORARY ROCK SEDIMENT DAMS TYPE - B AND TEMPORARY ROCK SILT CHECKS TYPE - A AT DRAINAGE OUTLETS.

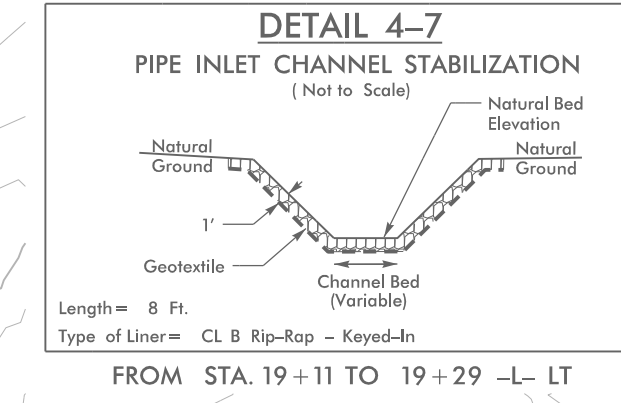
NOTE:
 UTILIZE COIR FIBER MATTING ADJACENT TO WETLANDS/ JURISDICTIONAL AREAS, AND AS DIRECTED

CLEARING AND GRUBBING EROSION CONTROL FOR CONSTRUCTION SHEET 4

NOTE:
 UTILIZE TEMPORARY SEDIMENT BASIN OR SPECIAL STILLING BASIN(S) AS STILLING BASIN WHERE APPLICABLE.

90 x 45 x 3
2 inch Skimmer
with 1.750 inch
Orifice Diameter
29 ft. weir
ID 4.1

80 x 40 x 3
2 inch Skimmer
with 1.625 inch
Orifice Diameter
24 ft. weir
ID 4.2

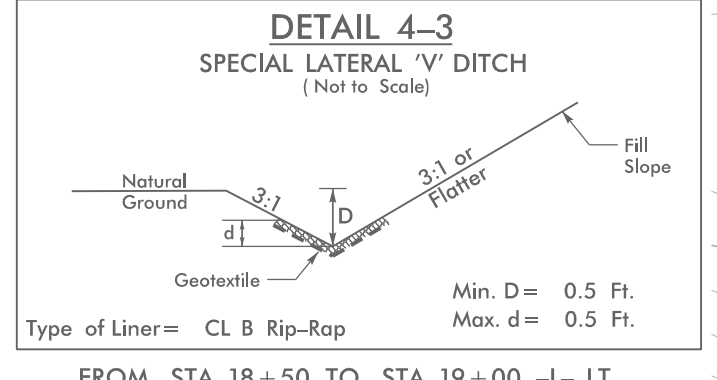
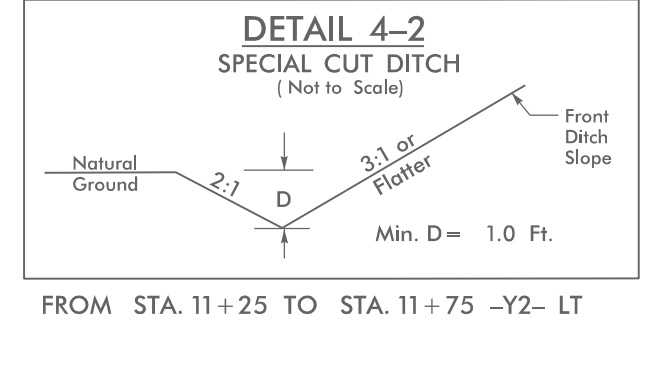
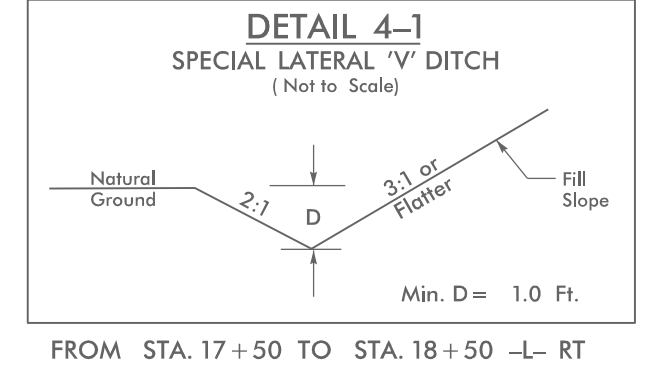
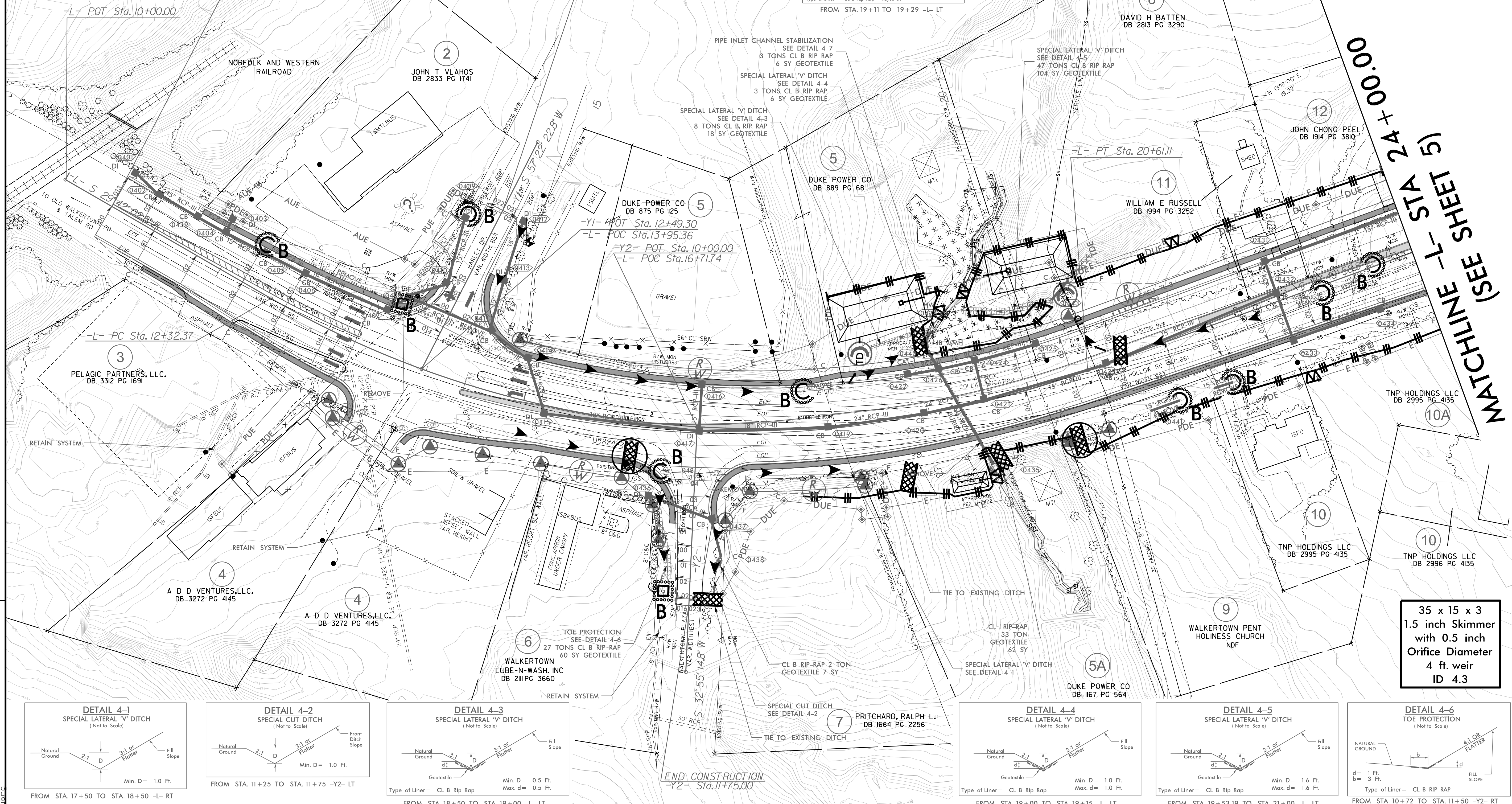


CONTRACTOR WILL NOT BE PERMITTED TO STORE ANY EQUIPMENT ON NS PROPERTY WITHOUT PERMISSION FROM THE NS RAILROAD ENGINEER IN ACCORDANCE WITH SECTION E.5.K.1 OF THE NS PUBLIC PROJECTS MANUAL.

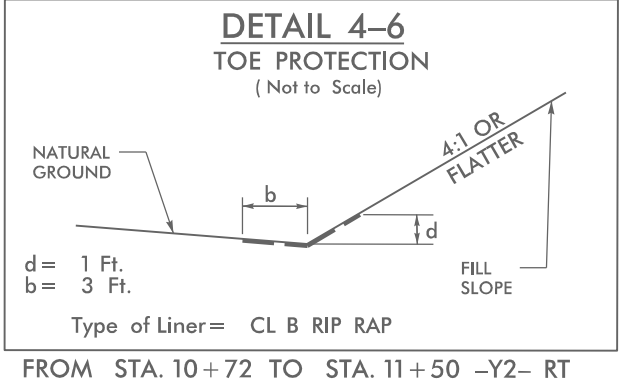
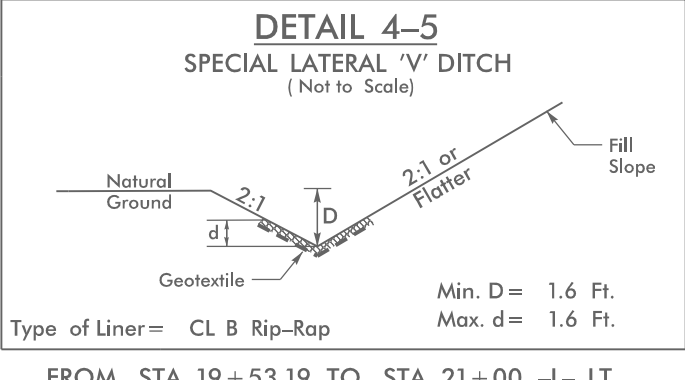
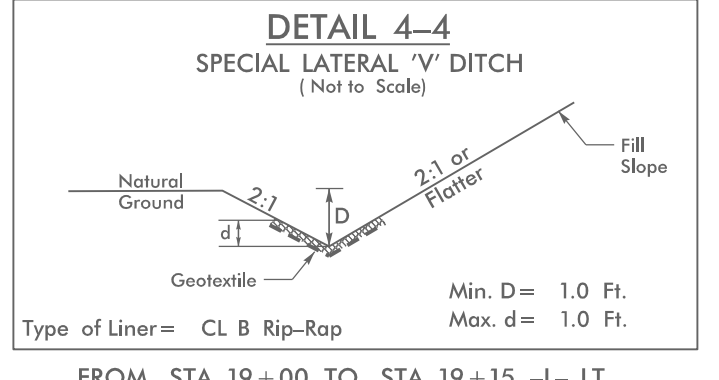
BEGIN TIP PROJECT U-5824
 -L- Sta.10+52.50

BEGIN CONSTRUCTION
 -Y1- Sta.10+75.00

24+00.00
 STA 24+00.00
 MATCHLINE -L- STA 5)
 MATCHLINE (SEE SHEET 5)



END CONSTRUCTION
 -Y2- Sta.11+75.00



35 x 15 x 3
1.5 inch Skimmer
with 0.5 inch
Orifice Diameter
4 ft. weir
ID 4.3

REVISIONS

8/17/19

09-AUG-2023 13:29
 U5824-EC-Const-4-C&G.dgn