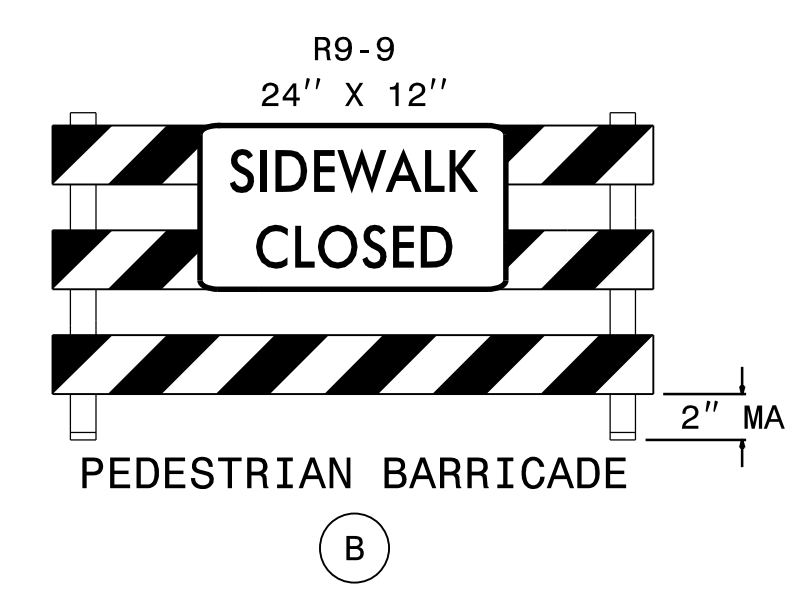
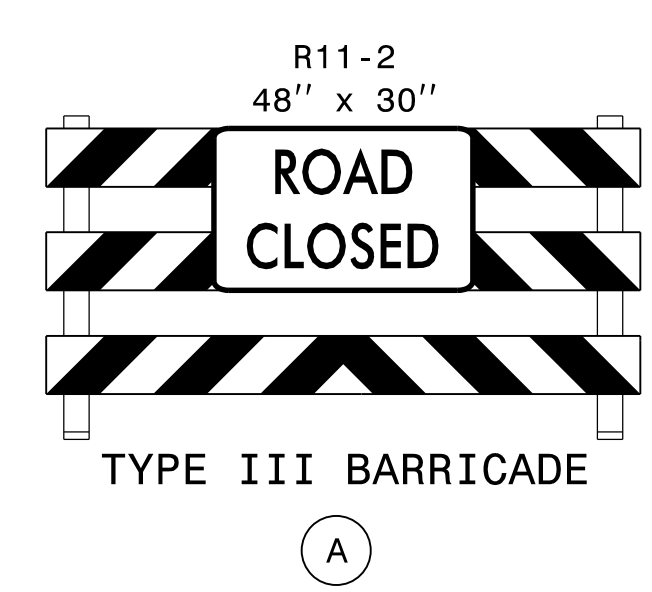
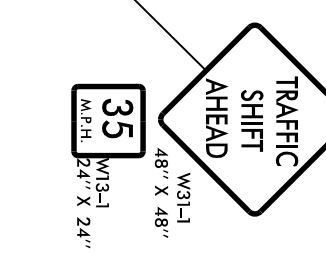
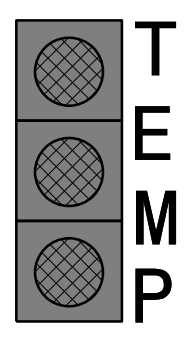
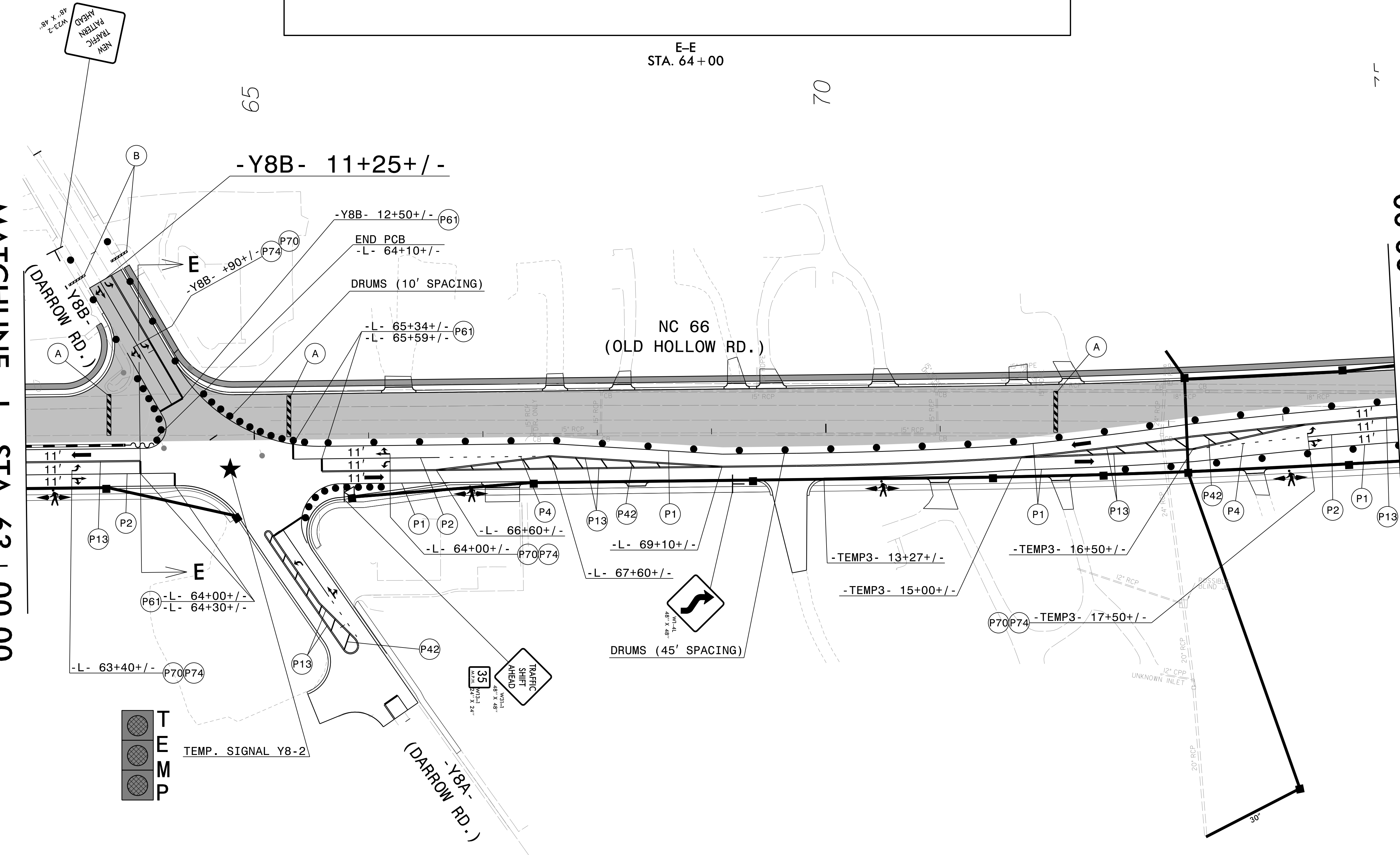


MATCHLINE -L- STA 63+00.00  
(SEE TMP-7E)

MATCHLINE -L- STA 75+00.00  
(SEE TMP-7G)



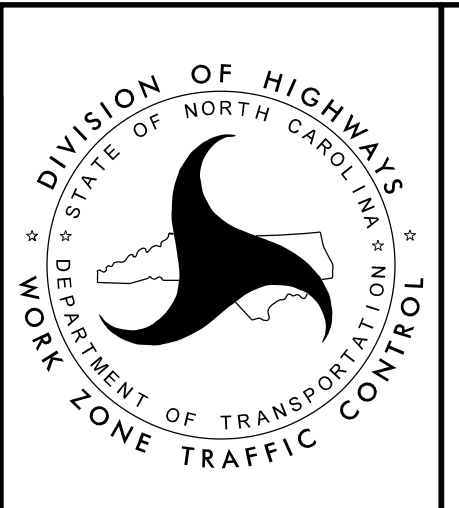
SEE ROADWAY DETAIL SHEETS FOR TEMPORARY ALIGNMENT INFORMATION.  
REFERENCE PAVEMENT MARKING PLANS FOR -Y- LINE PAVEMENT MARKING LOCATIONS AND DIMENSIONS NOT OTHERWISE SHOWN.

WORK AREA

APPROVED: *Faith E. Jahnke*  
DATE: 9/15/2023

SEAL  
NORTH CAROLINA PROFESSIONAL ENGINEER  
FAITH E. JAHNKE  
046981

DOCUMENT NOT CONSIDERED FINAL UNLESS ALL SIGNATURES COMPLETED



PHASE II  
DETAIL

25-AUG-2023 11:12  
U5824-TC-TMP-7F.dgn  
Faith.Jahnke