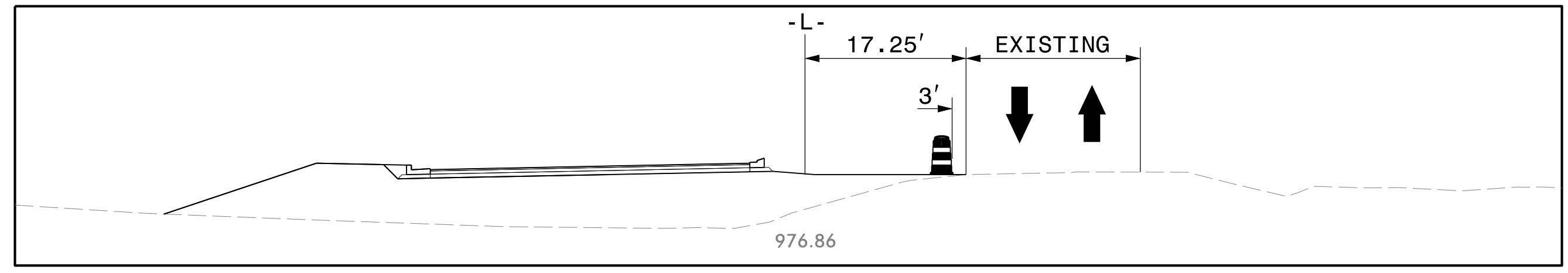


INSTALL LONGITUDINAL DRAINAGE IN SECTIONS USING TEMPORARY LANE CLOSURES AND IN ACCORDANCE WITH ICT'S.

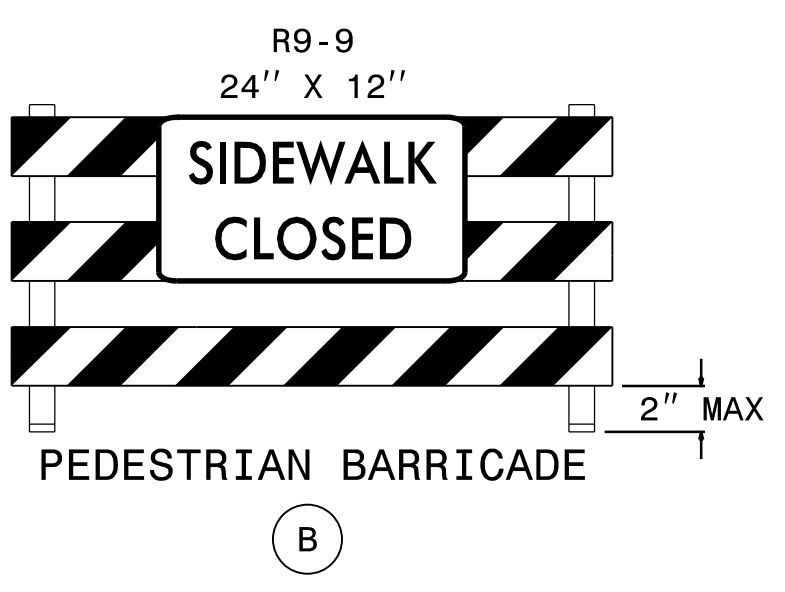
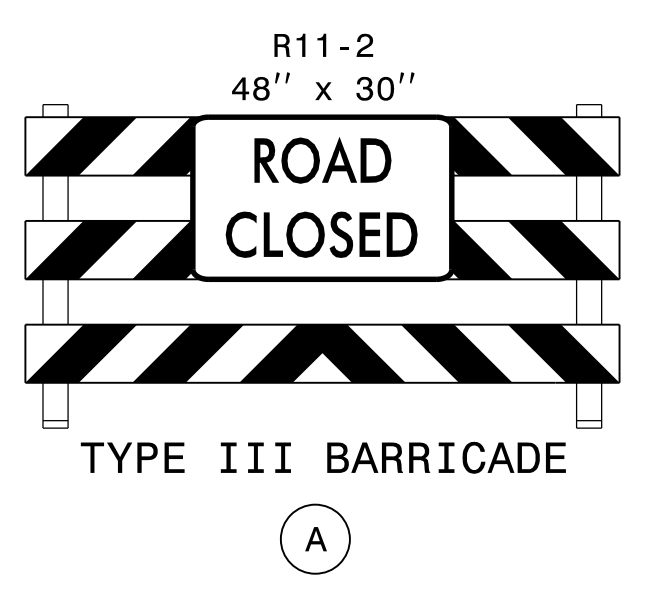
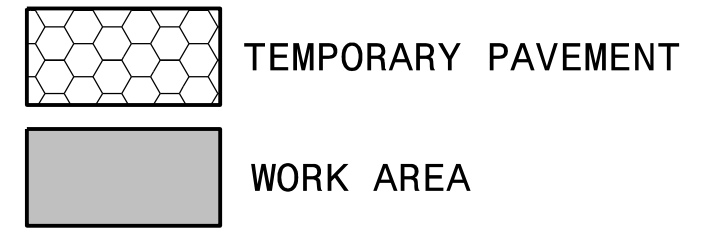
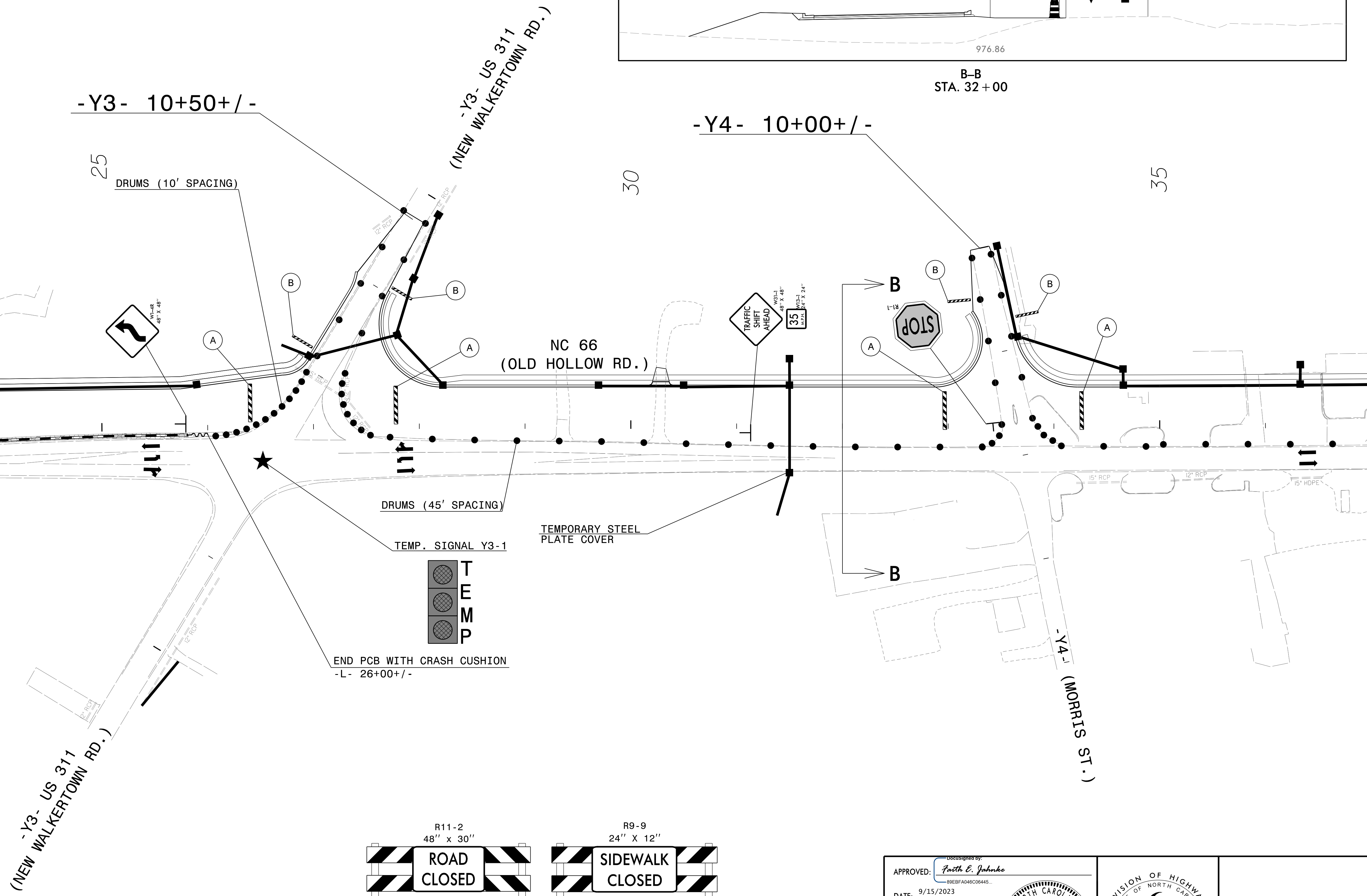
SEE ROADWAY DETAIL SHEETS FOR TEMPORARY PAVEMENT DETAILS.



B-B  
STA. 32+00

MATCHLINE -L- STA 24+00.00  
(SEE TMP-6A)

-L- STA 37+00.00

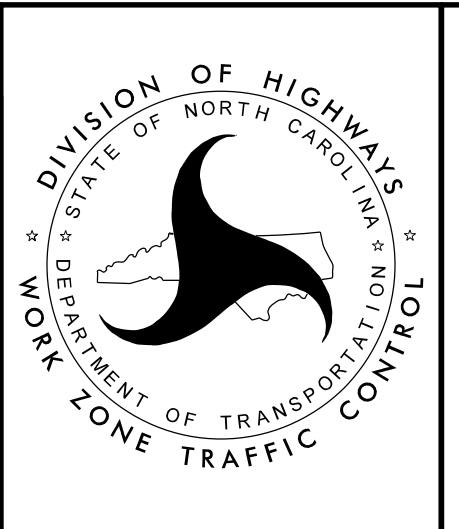


APPROVED: Faith E. Jahnke

DATE: 9/15/2023

SEAL

DOCUMENT NOT CONSIDERED FINAL UNLESS ALL SIGNATURES COMPLETED



PHASE IA  
STEP 7  
DETAIL

15-AUG-2023 14:55  
U5824-1C-TMP-6B.dgn  
faith.jahnke