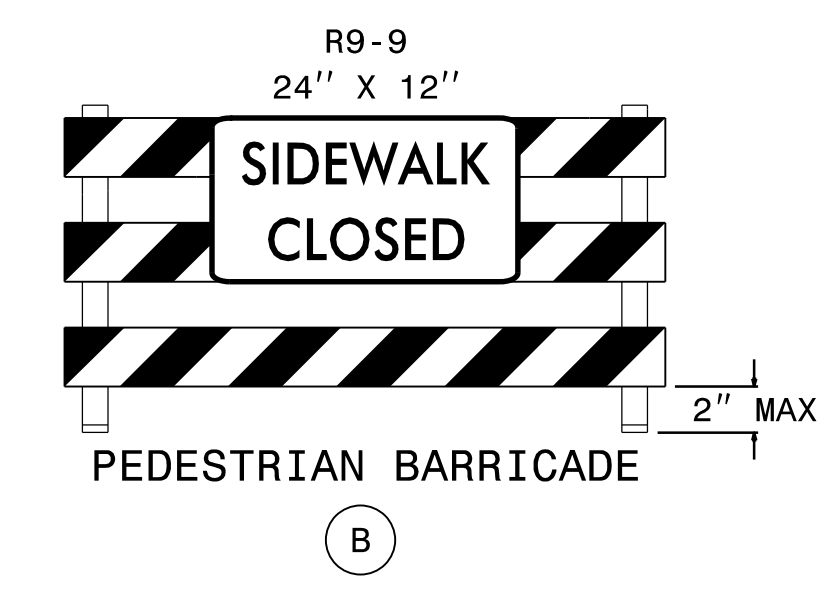
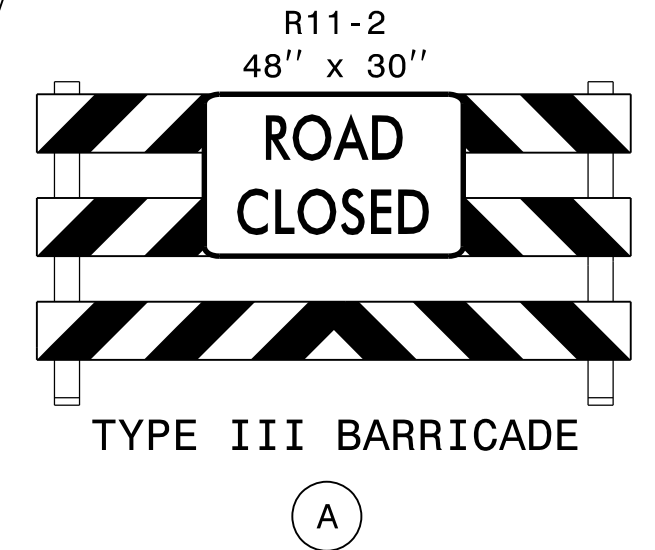
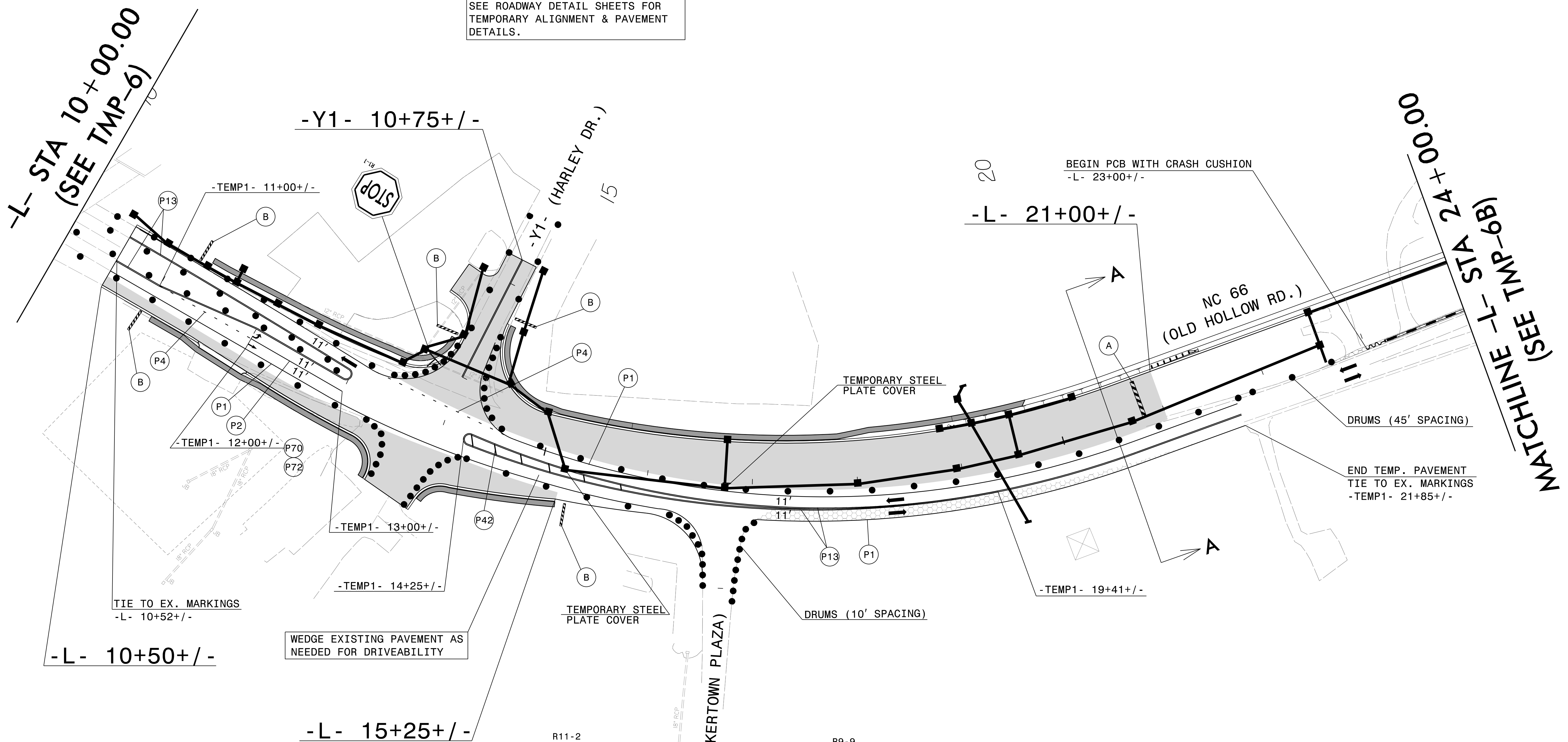
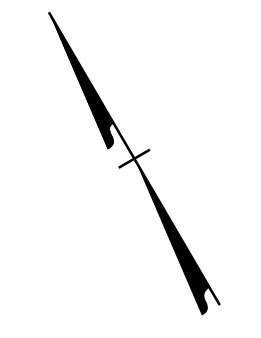


INSTALL LONGITUDINAL DRAINAGE IN SECTIONS USING TEMPORARY LANE CLOSURES AND IN ACCORDANCE WITH ICT'S.

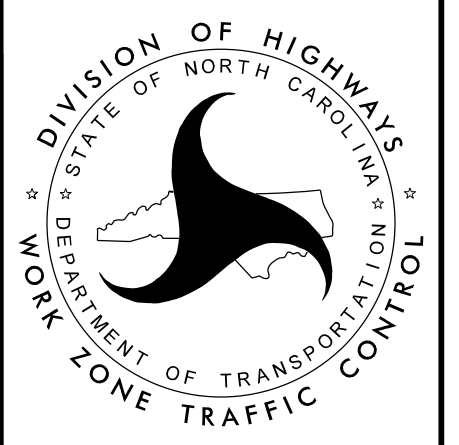
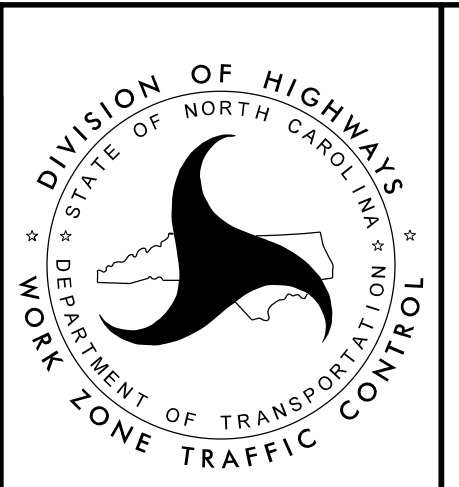
SEE ROADWAY DETAIL SHEETS FOR TEMPORARY ALIGNMENT & PAVEMENT DETAILS.



APPROVED: *Faith E. Jahnke*
DATE: 9/15/2023

SEAL

DOCUMENT NOT CONSIDERED FINAL UNLESS ALL SIGNATURES COMPLETED



PHASE IA
STEP 7
DETAIL

15-AUG-2023 14:55
U5824-1C-TMP-6A.dgn
Faith.Jahnke