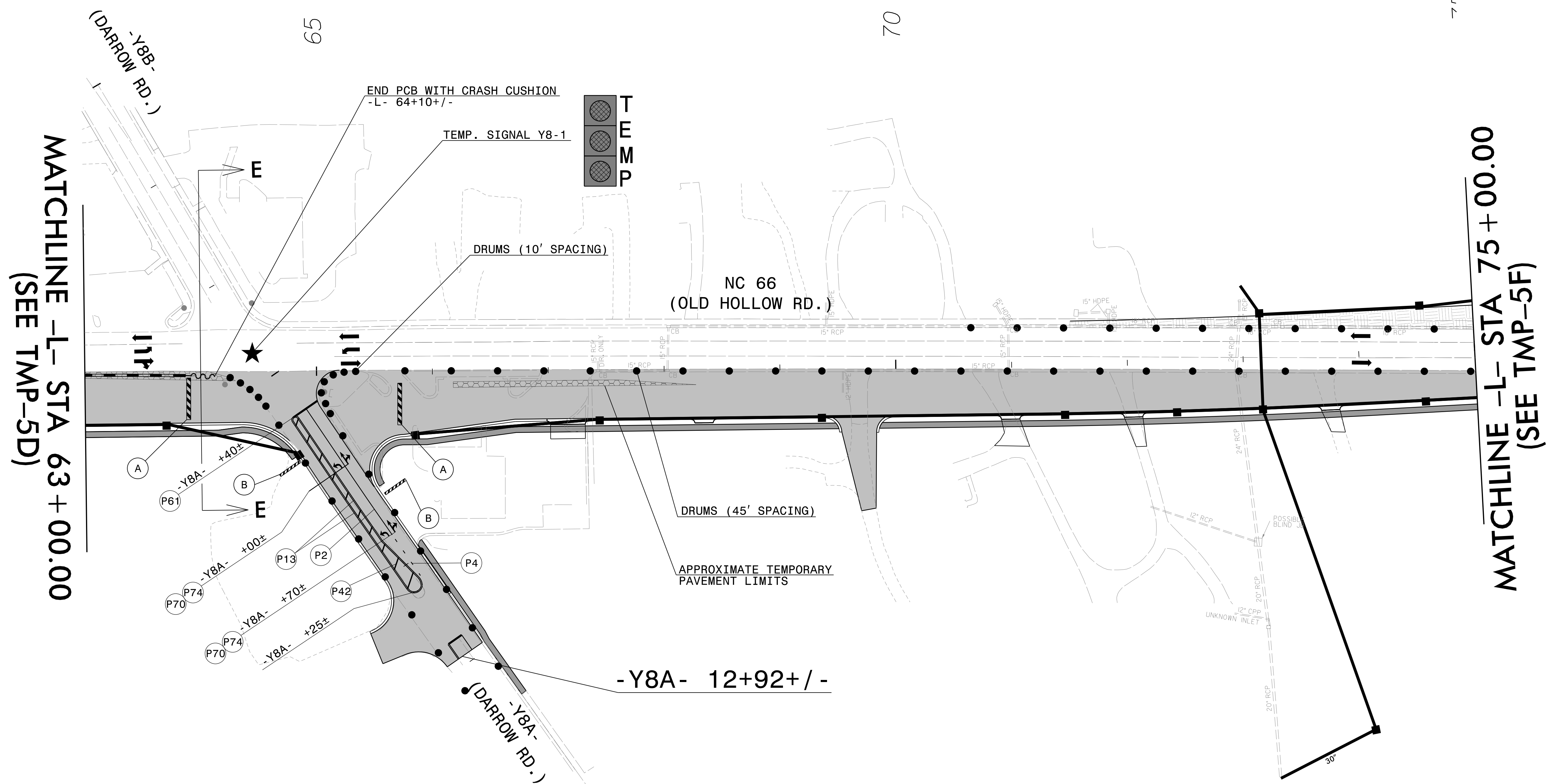


E-E
STA. 64+00



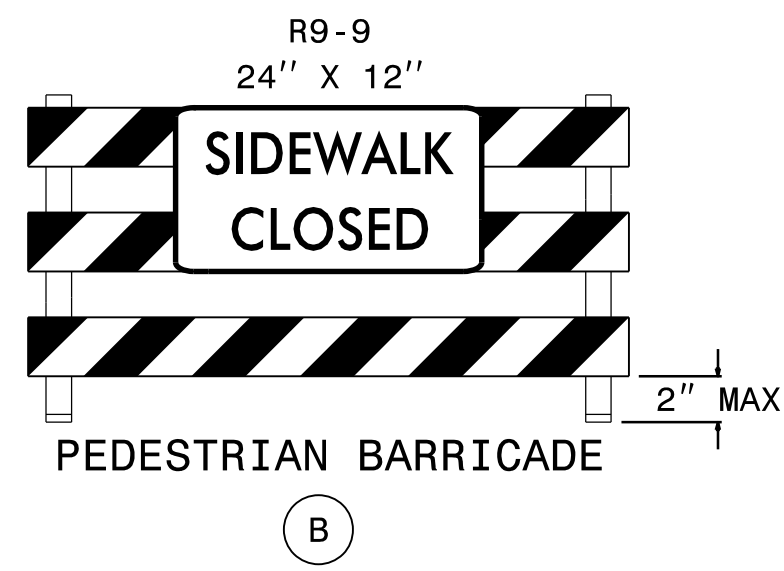
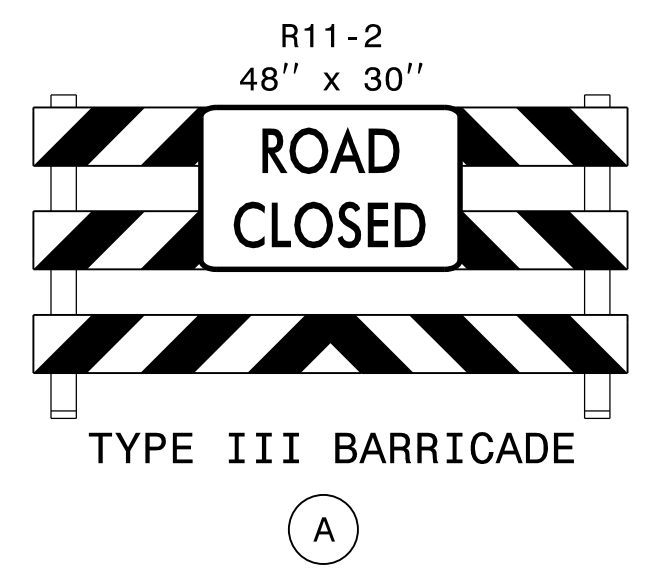
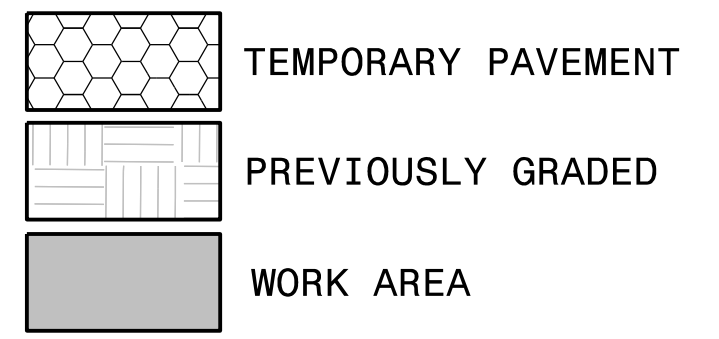
MATCHLINE -L- STA 63+00.00
(SEE TMP-5D)

MATCHLINE -L- STA 75+00.00
(SEE TMP-5F)

SEE ROADWAY DETAIL SHEETS FOR TEMPORARY PAVEMENT DETAILS.

REFERENCE PAVEMENT MARKING PLANS FOR -Y- LINE PAVEMENT MARKING LOCATIONS AND DIMENSIONS NOT OTHERWISE SHOWN.

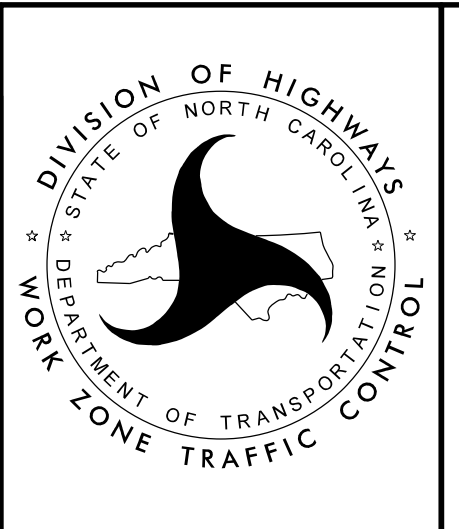
INSTALL LONGITUDINAL DRAINAGE IN SECTIONS USING TEMPORARY LANE CLOSURES AND IN ACCORDANCE WITH ICT'S.



APPROVED: *Faith E. Jahnke*
DATE: 9/15/2023

SEAL

DOCUMENT NOT CONSIDERED FINAL UNLESS ALL SIGNATURES COMPLETED



PHASE IA
DETAIL

15-AUG-2023 14:54
U5824-TC-TMP-5E.dgn
Faith.Jahnke