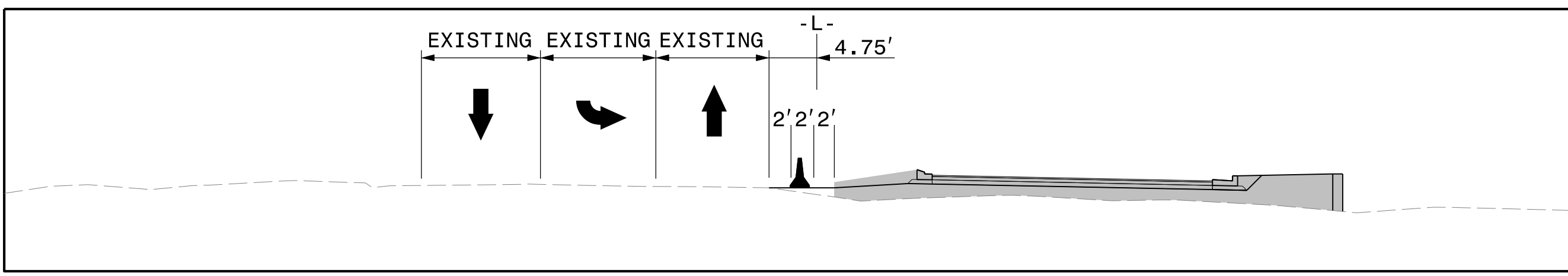


INSTALL LONGITUDINAL DRAINAGE IN SECTIONS USING TEMPORARY LANE CLOSURES AND IN ACCORDANCE WITH ICT'S.

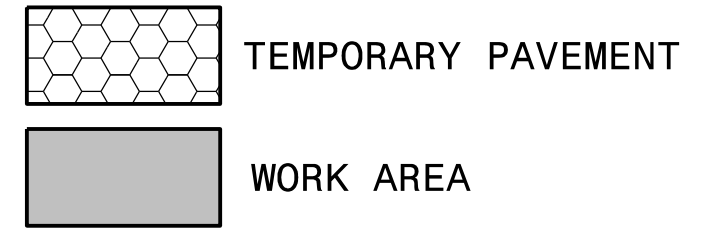
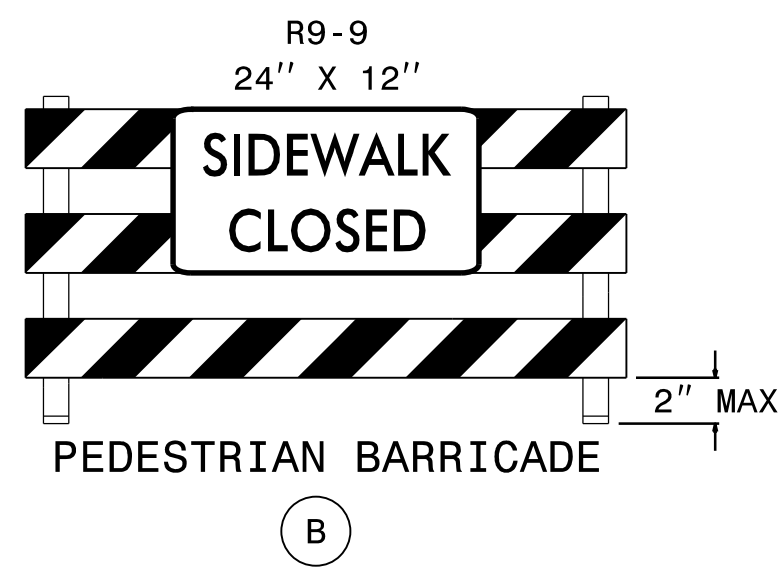
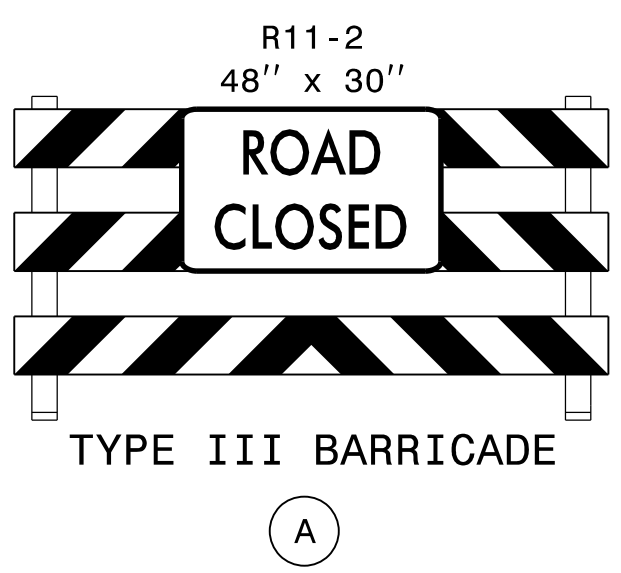
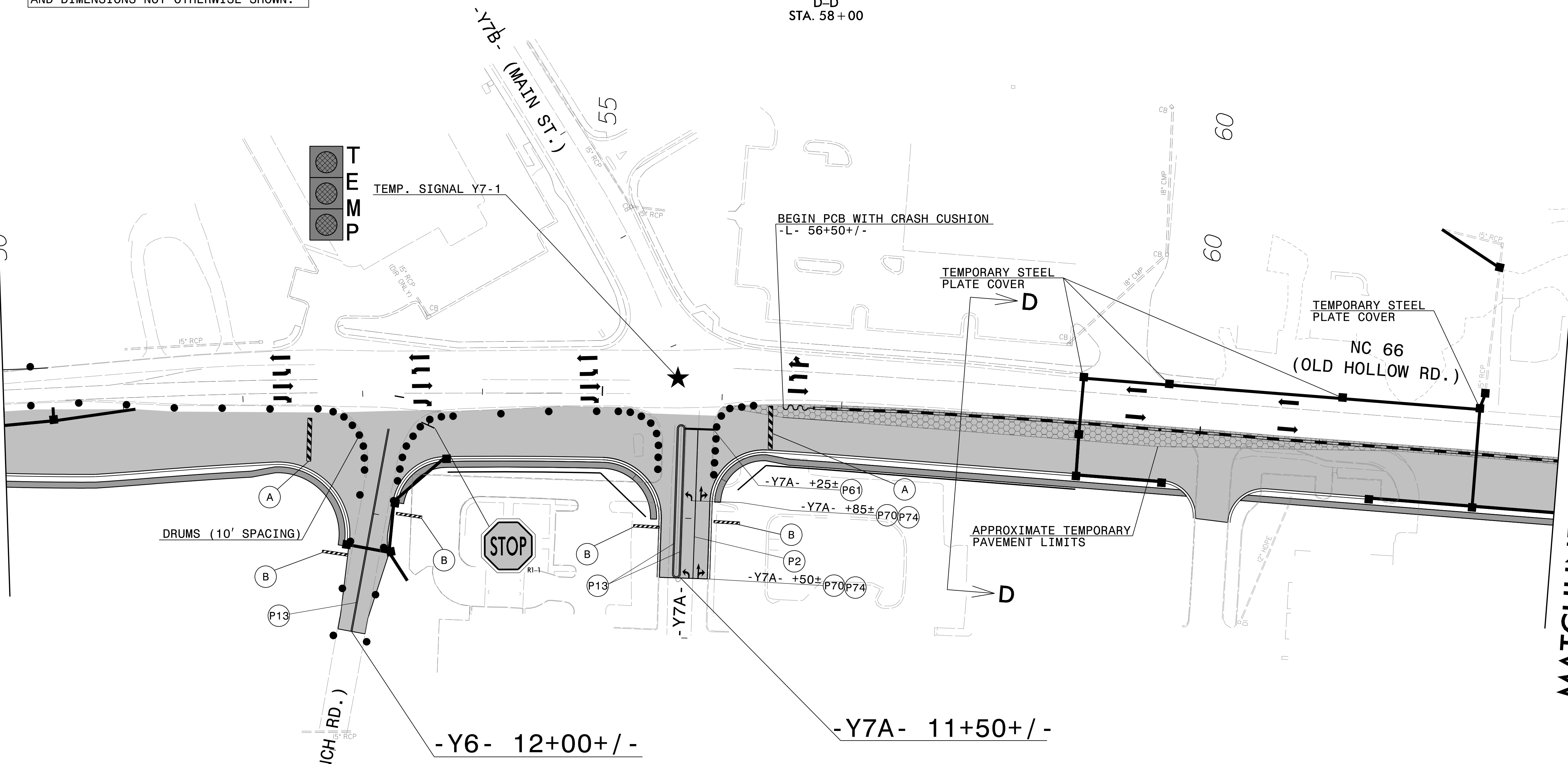
SEE ROADWAY DETAIL SHEETS FOR TEMPORARY PAVEMENT DETAILS.

REFERENCE PAVEMENT MARKING PLANS FOR -Y- LINE PAVEMENT MARKING LOCATIONS AND DIMENSIONS NOT OTHERWISE SHOWN.



MATCHLINE -L- STA 50+00.00
(SEE TMP-5C)

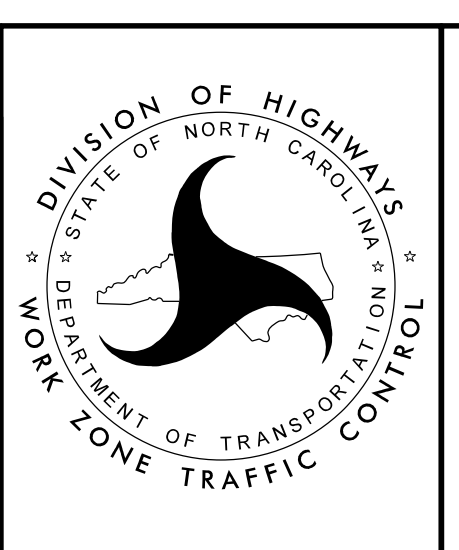
MATCHLINE -L- STA 63+00.00
(SEE TMP-5E)



APPROVED: *Faith E. Jahnske*
DATE: 9/15/2023

Seal of Faith E. Jahnske, Professional Engineer, No. 046981, State of North Carolina.

DOCUMENT NOT CONSIDERED FINAL UNLESS ALL SIGNATURES COMPLETED



PHASE IA
DETAIL