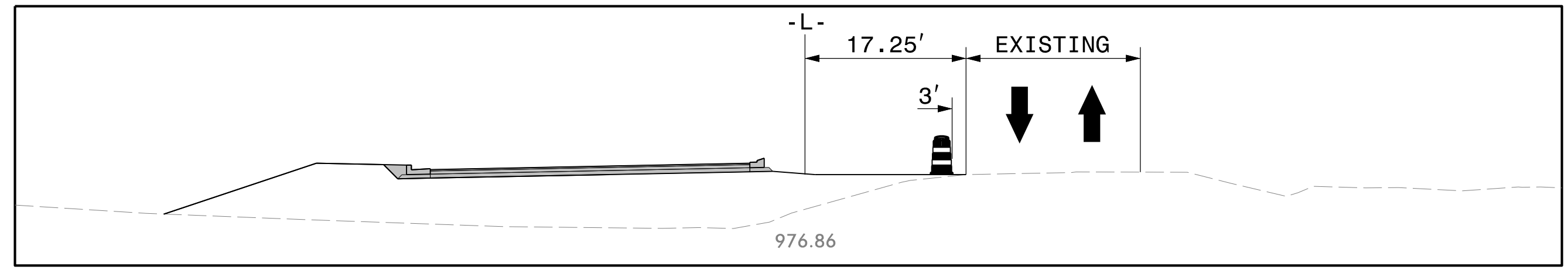


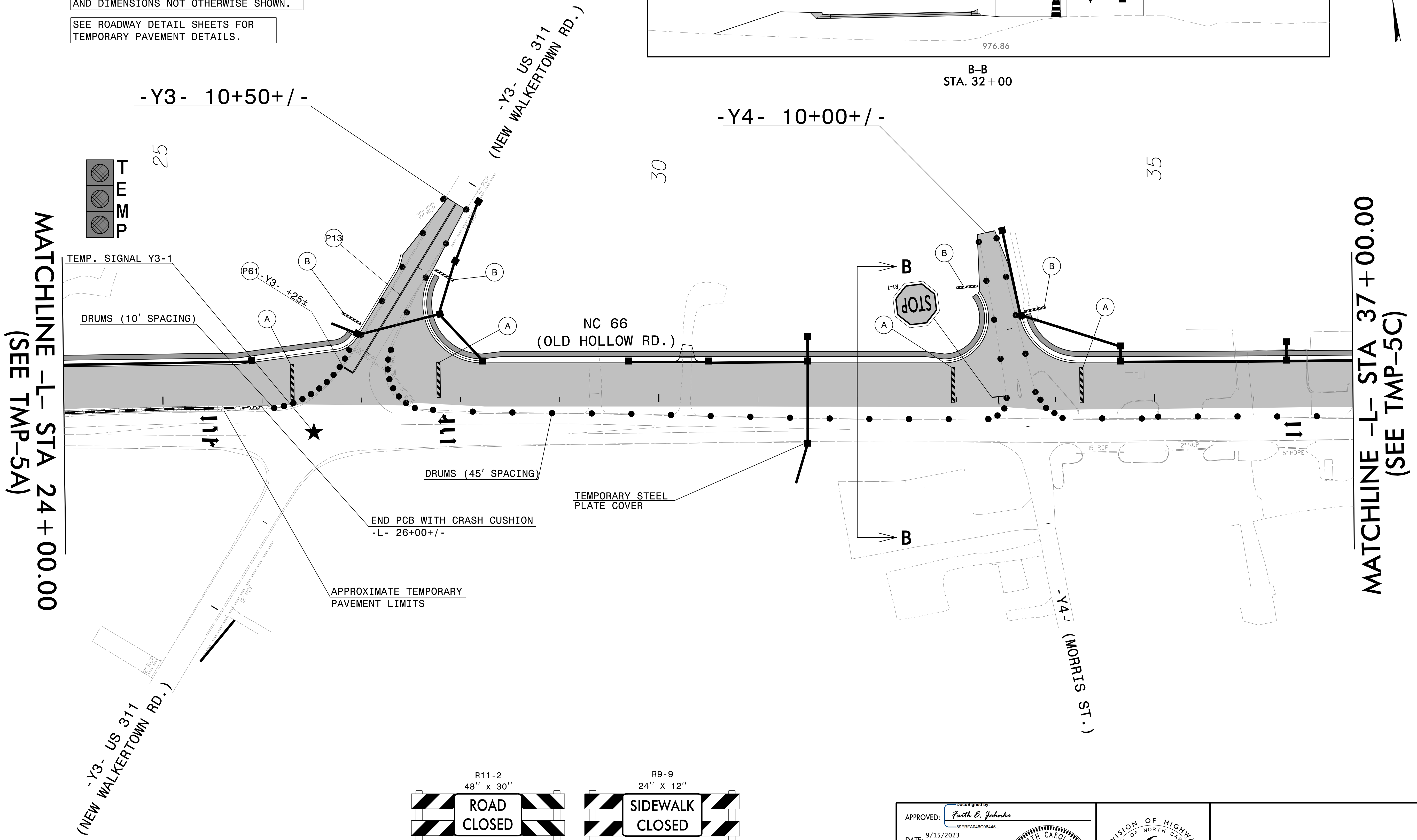
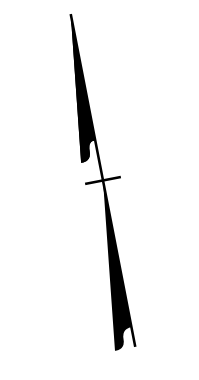
INSTALL LONGITUDINAL DRAINAGE IN SECTIONS USING TEMPORARY LANE CLOSURES AND IN ACCORDANCE WITH ICT'S.

REFERENCE PAVEMENT MARKING PLANS FOR -Y- LINE PAVEMENT MARKING LOCATIONS AND DIMENSIONS NOT OTHERWISE SHOWN.

SEE ROADWAY DETAIL SHEETS FOR TEMPORARY PAVEMENT DETAILS.

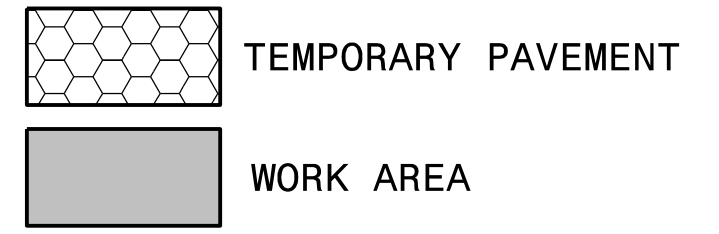
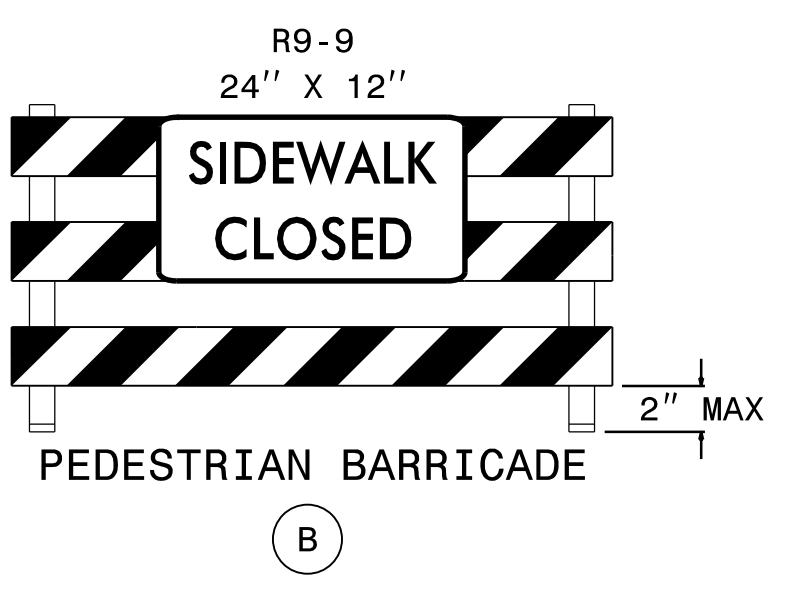
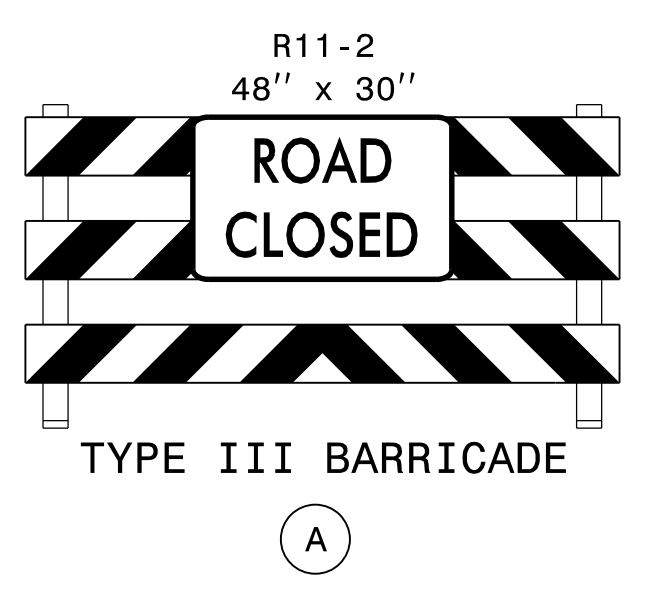


B-B
STA. 32+00



MATCHLINE -L- STA 24+00.00
(SEE TMP-5A)

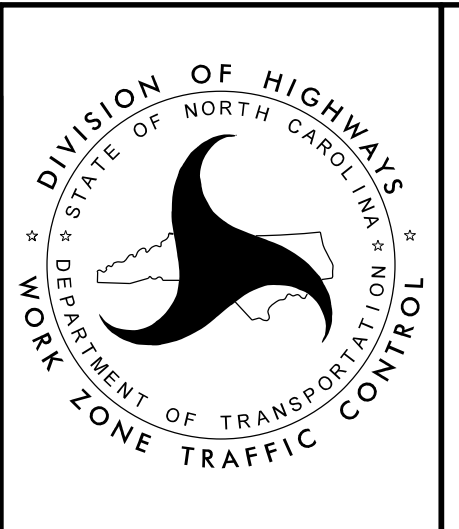
MATCHLINE -L- STA 37+00.00
(SEE TMP-5C)



APPROVED: *Faith E. Jahnke*
DATE: 9/15/2023

SEAL
NORTH CAROLINA PROFESSIONAL ENGINEER
FAITH E. JAHNKE
046981

DOCUMENT NOT CONSIDERED FINAL
UNLESS ALL SIGNATURES COMPLETED



PHASE IA
DETAIL

15-AUG-2023 14:54
U5824-1C-TMP-5B.dgn
faith.jahnke