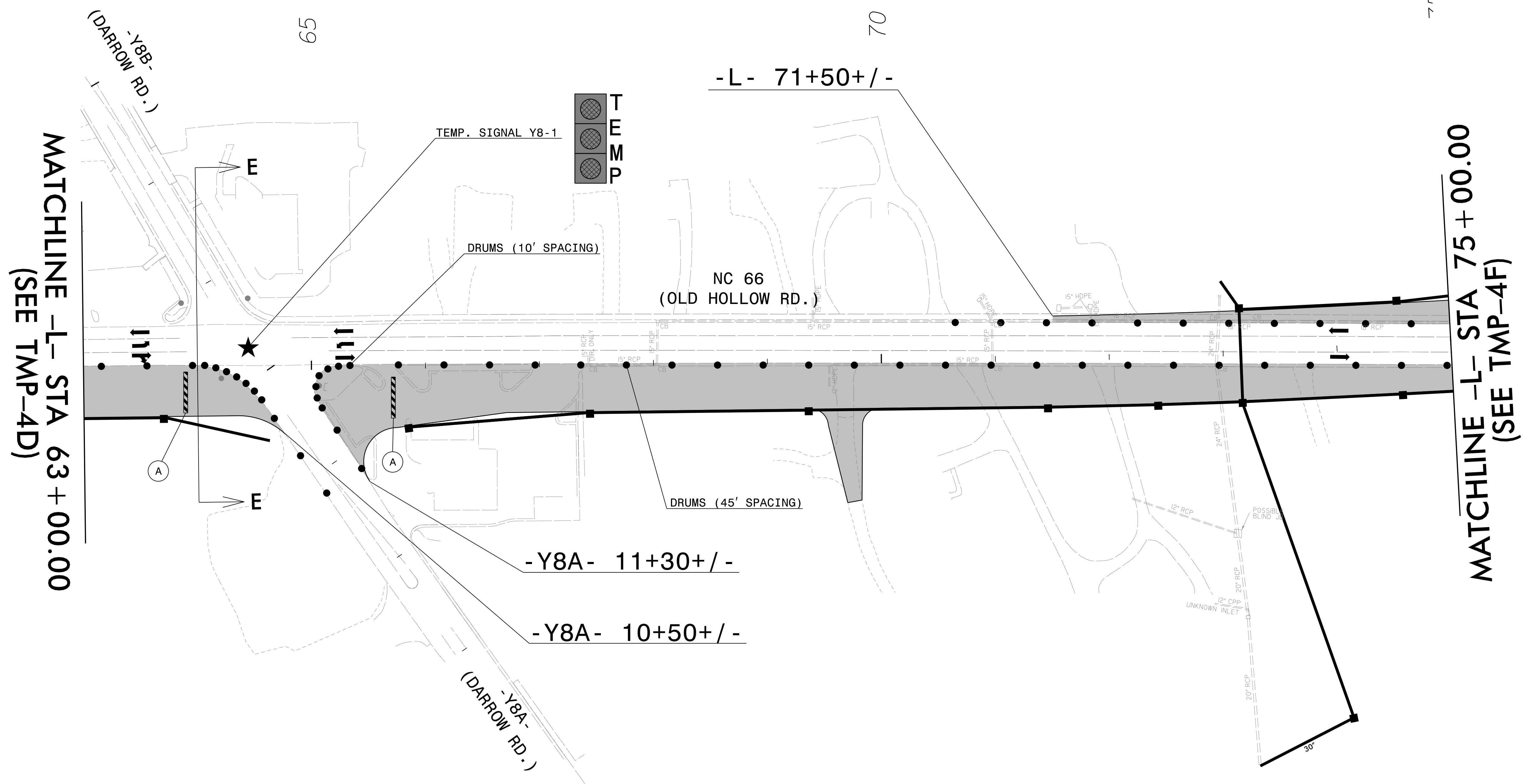
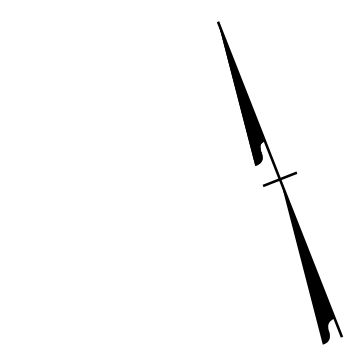


E-E
STA. 64+00

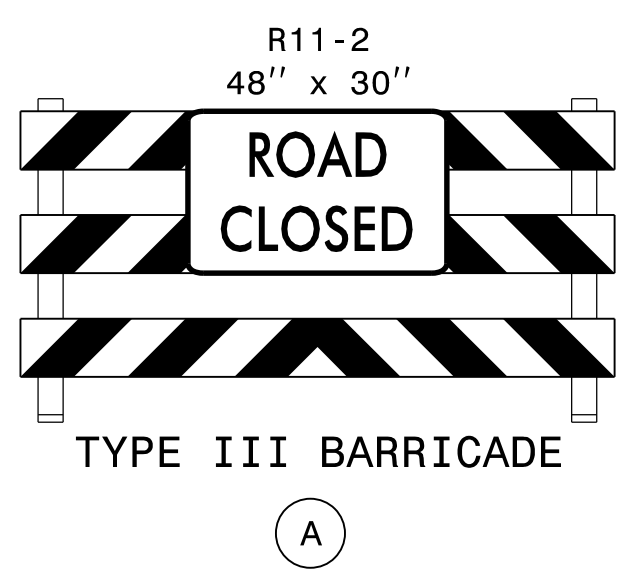


MATCHLINE -L- STA 63+00.00
(SEE TMP-4D)

MATCHLINE -L- STA 75+00.00
(SEE TMP-4F)

WORK AREA

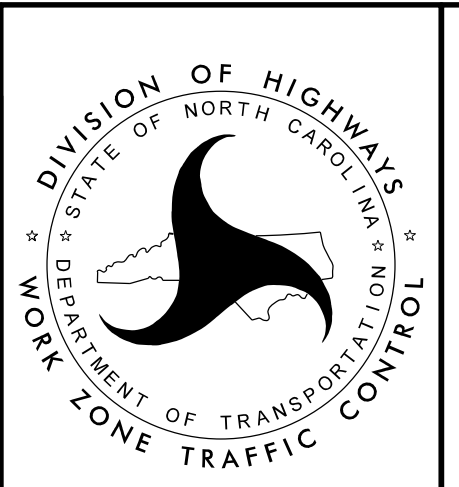
INSTALL LONGITUDINAL DRAINAGE IN SECTIONS USING TEMPORARY LANE CLOSURES AND IN ACCORDANCE WITH ICT's.



APPROVED: *Faith E. Jahnke*
DATE: 9/15/2023

SEAL

**DOCUMENT NOT CONSIDERED FINAL
UNLESS ALL SIGNATURES COMPLETED**



PHASE I
DETAIL

15-AUG-2023 14:54
U5824-1C-TMP-4E.dgn
faith.jahnke