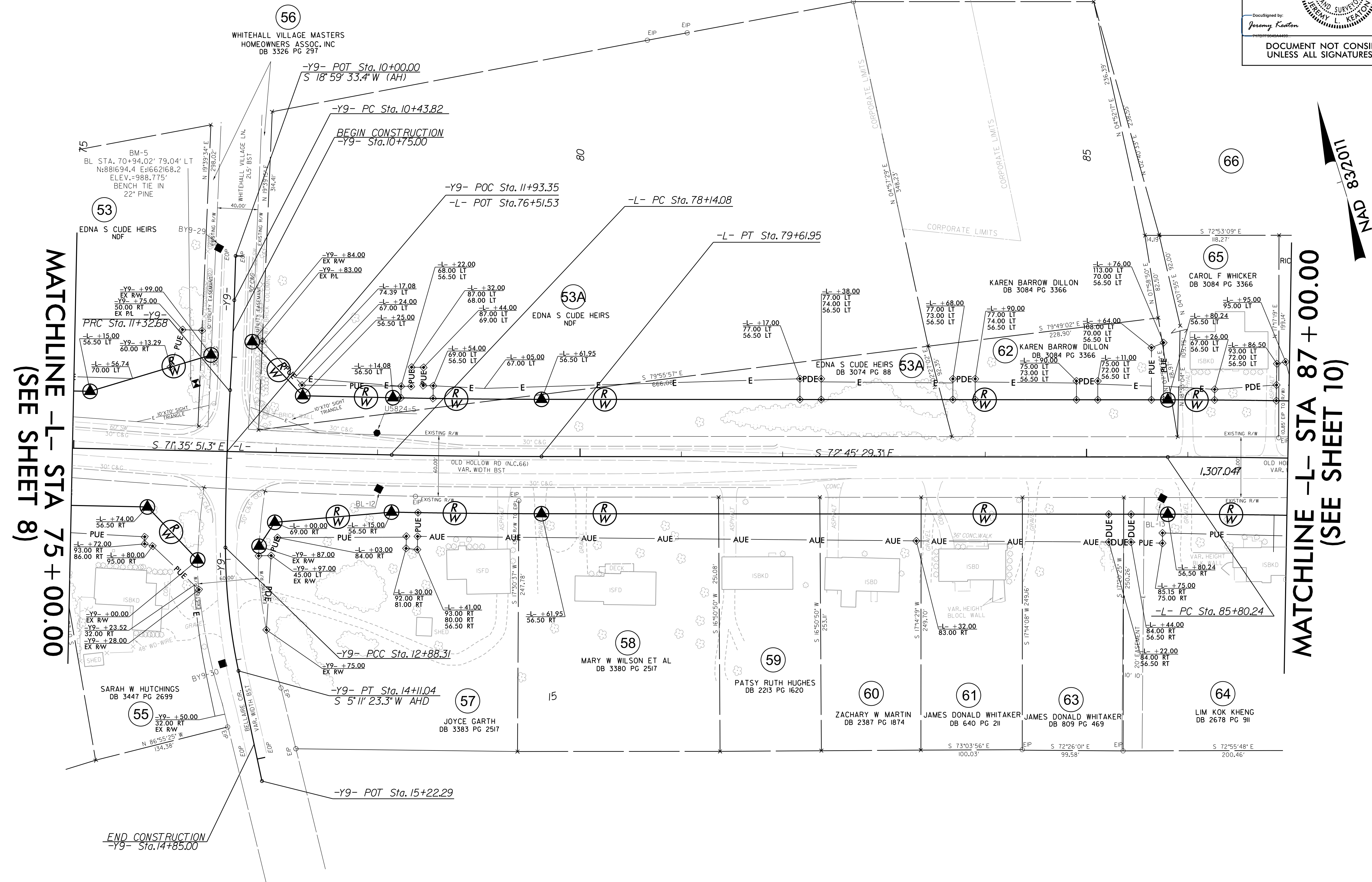


<p>-L-</p> <p>PI Sta 78+88.02  <math>\Delta = 1^{\circ}09'38.0"</math> (LT)  <math>D = 0^{\circ}47'05.5"</math>  <math>L = 147.86'</math>  <math>T = 73.93'</math>  <math>R = 7,300.00'</math>  <math>SE = NC</math></p>	<p>-Y9-</p> <p>PI Sta 87+15.36  <math>\Delta = 2^{\circ}07'14.6"</math> (RT)  <math>D = 0^{\circ}47'05.5"</math>  <math>L = 270.20'</math>  <math>T = 135.12'</math>  <math>R = 7,300.00'</math>  <math>SE = NC</math></p>	<p>-Y9-</p> <p>PI Sta 10+88.25  <math>\Delta = 1^{\circ}41'49.3"</math> (RT)  <math>D = 1^{\circ}54'35.5"</math>  <math>L = 88.86'</math>  <math>T = 44.43'</math>  <math>R = 3,000.00'</math></p>	<p>-Y9-</p> <p>PI Sta 12+10.52  <math>\Delta = 3^{\circ}34'51.9"</math> (LT)  <math>D = 2^{\circ}18'03.7"</math>  <math>L = 155.63'</math>  <math>T = 77.84'</math>  <math>R = 2,490.00'</math></p>	<p>-Y9-</p> <p>PI Sta 13+49.89  <math>\Delta = 1^{\circ}55'07.5"</math> (LT)  <math>D = 9^{\circ}42'40.1"</math>  <math>L = 122.73'</math>  <math>T = 61.59'</math>  <math>R = 590.00'</math></p>
--	--	--	---	---

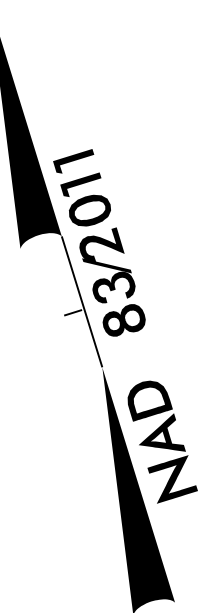
I, Jeremy L. Keaton, certify that the right of way and permanent easement monumentation for this project shown herein was completed under my direct and responsible charge from an actual survey made under my supervision; that all horizontal closures had a minimum ratio of precision of 1:10,000 (Class A). Field work was performed from December 2019 to July 2023, and all coordinates are based on NAD83/2011; That this survey was performed to meet the requirements of 21NCAC 56.1600 as applicable.

This 14th day of August 2023.  
 (Signed) Jeremy Keaton  
 Professional Land Surveyor L-4487



MATCHLINE -L- STA 75 + 00.00  
(SEE SHEET 8)

MATCHLINE -L- STA 87 + 00.00  
(SEE SHEET 10)



- NOTES:
- IF FURTHER INFORMATION REGARDING PROJECT CONTROL IS NEEDED PLEASE CONTACT THE DIVISION 9 DDC UNIT.
  - PROJECT CONTROL WAS ESTABLISHED USING GNSS, THE GLOBAL NAVIGATION SATELLITE SYSTEM.
  - RIGHT OF WAY MONUMENTATION ESTABLISHED DECEMBER 2019 TO JULY 2023.

16-AUG-2023 13:09 S:\Projects\Development\16-Projects\U-5824-NC66\Surveys\Control\_Sheets\U5824-ddc-rw09.dgn  
 U-5824-NC66-16-Projects\U-5824-NC66\Surveys\Control\_Sheets\U5824-ddc-rw09.dgn  
 U-5824-NC66-16-Projects\U-5824-NC66\Surveys\Control\_Sheets\U5824-ddc-rw09.dgn